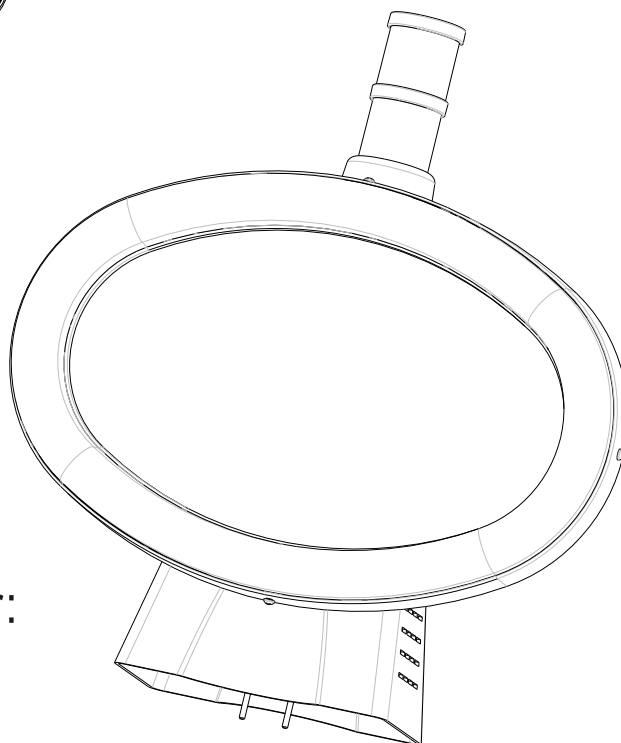
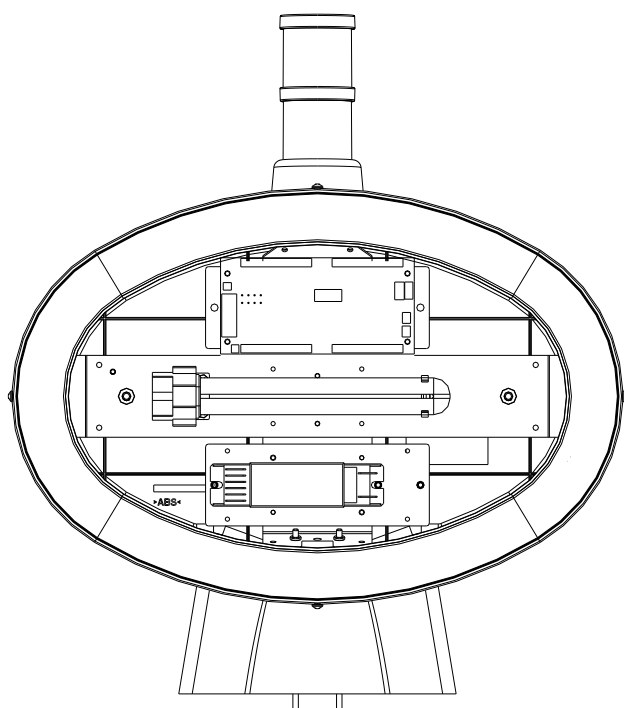


# RGB TOPPER

---



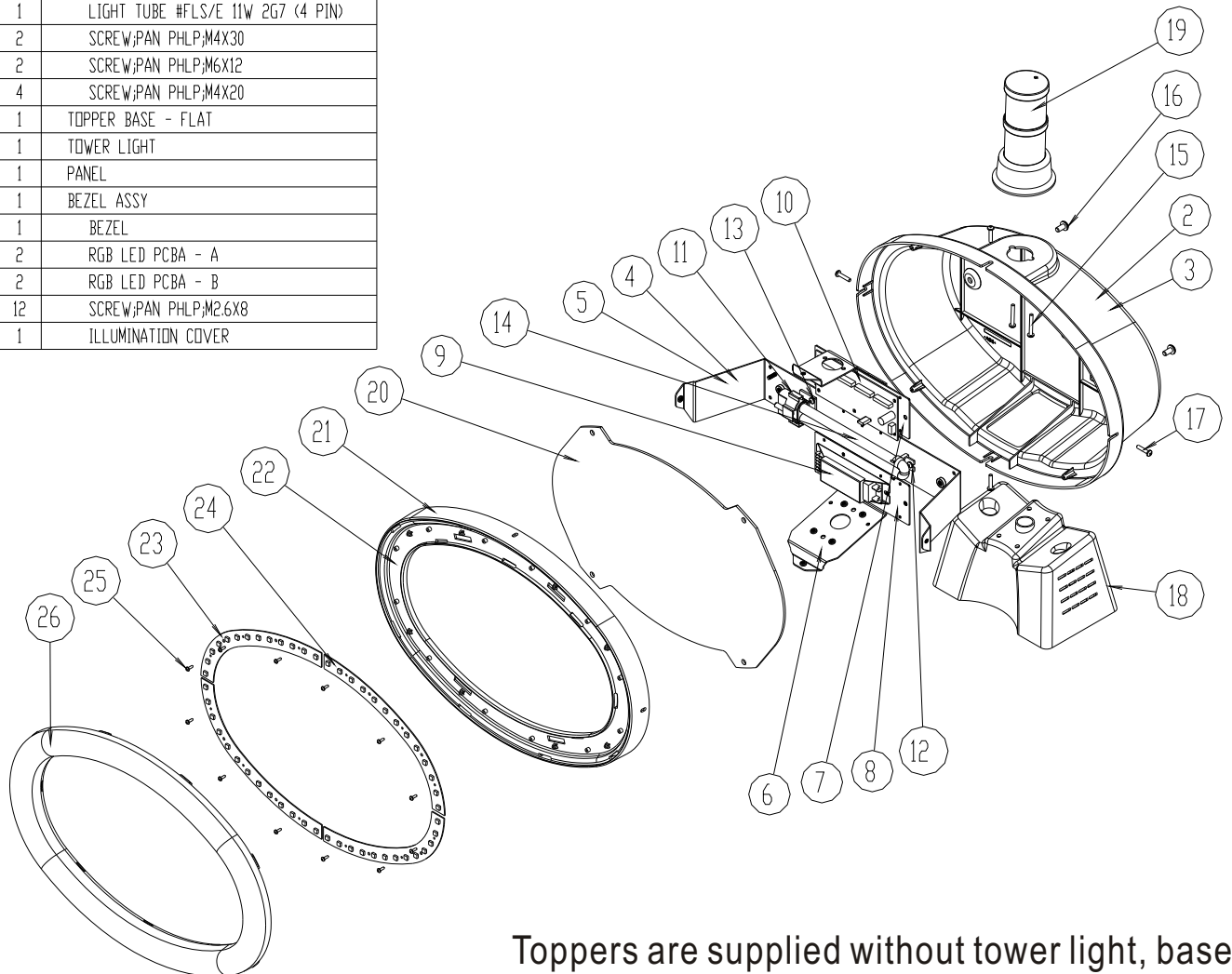
GAMING, AMUSEMENT AND INDUSTRIAL COMPONENTS



Order number for RGB Topper:  
104-06000

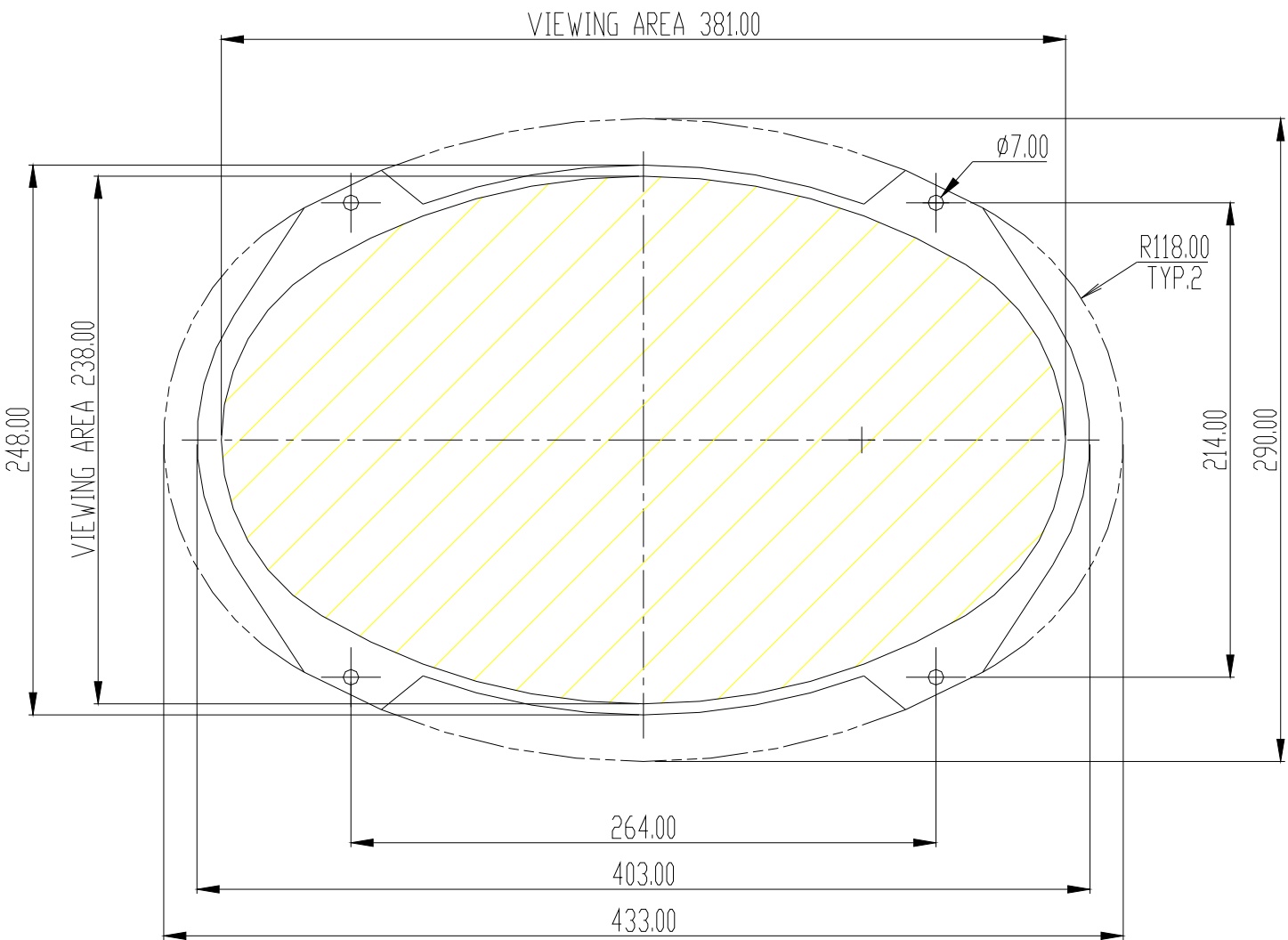
# RGB TOPPER

BILL OF MATERIAL		
ITEM	QTY	DESCRIPTION
1	1	RGB TOPPER - MINI-ELLIPSE
2	1	HOUSING ASSY
3	1	HOUSING WITH SPRAYING
4	1	METAL BRACKET ASSY
5	1	BRACKET A
6	1	BRACKET B
7	1	BRACKET C
8	1	BRACKET D
9	1	POWER TRANSFORMER (#22-0138)
10	1	MAIN PCB ASSY
11	1	LIGHT TUBE HOLDER
12	1	LIGHT MOUNT BRACKET
13	3	SCREW;PAN PHLP;M4X8
14	1	LIGHT TUBE #FLS/E 11W 2G7 (4 PIN)
15	2	SCREW;PAN PHLP;M4X30
16	2	SCREW;PAN PHLP;M6X12
17	4	SCREW;PAN PHLP;M4X20
18	1	TOPPER BASE - FLAT
19	1	TOWER LIGHT
20	1	PANEL
21	1	BEZEL ASSY
22	1	BEZEL
23	2	RGB LED PCBA - A
24	2	RGB LED PCBA - B
25	12	SCREW;PAN PHLP;M2.6X8
26	1	ILLUMINATION COVER



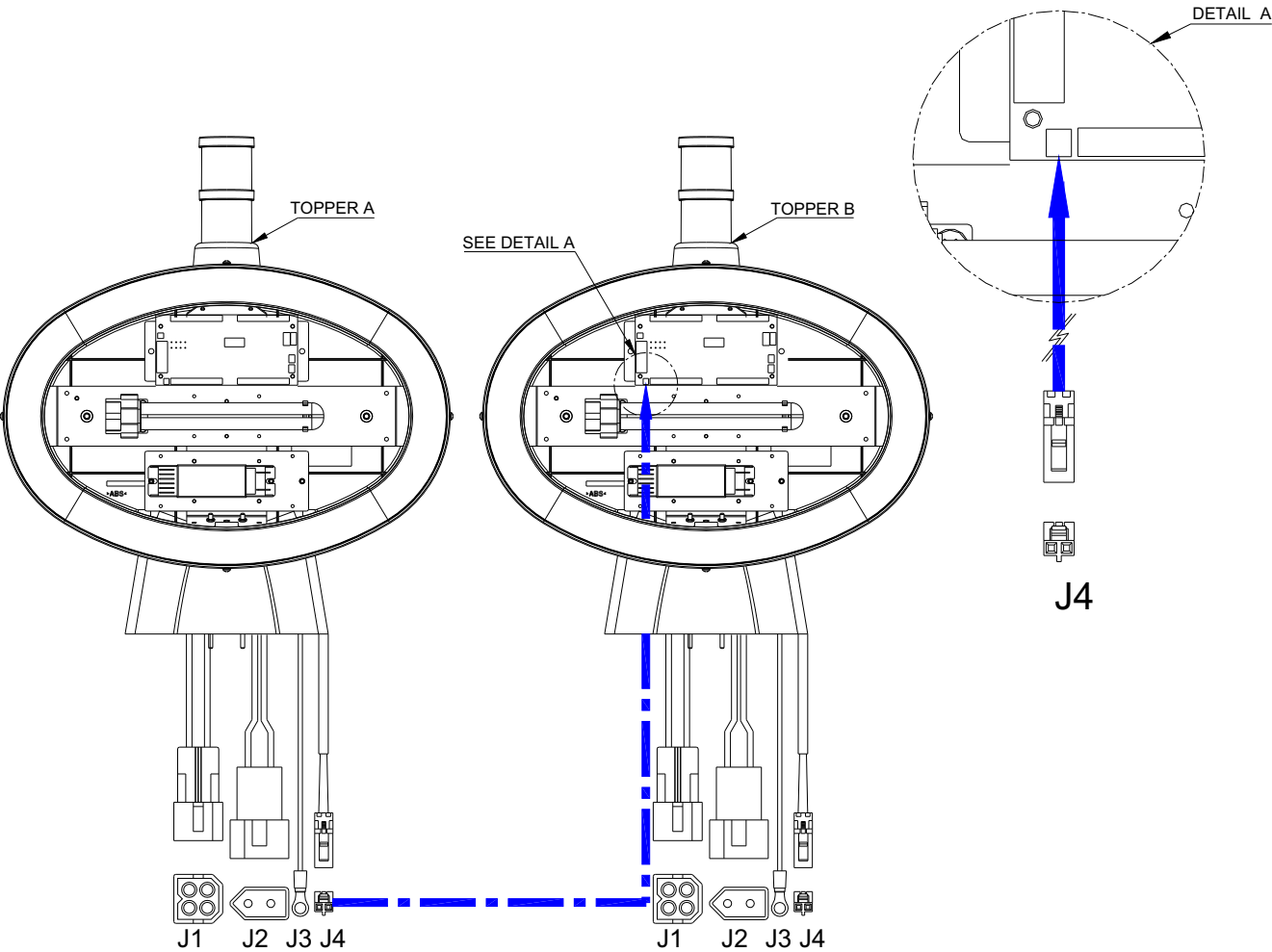
Toppers are supplied without tower light, base and artwork plate. There are various options for tower light and topper base. Please refer to General Catalogue for detail.

# RGB TOPPER



Drawing of front panel

# RGB TOPPER



## WIRE CONNECTION

NO	WIRE COLOR	DESCRIPTION	PIN	TOPPER CONNECTOR TYPE	MACHINE CONNECTOR TYPE
J1	BLACK	COMMON TOWERLIGHT	1	03-09-2049	
	YELLOW	LAMP 2ND FROM BOTTOM	2		
	WHITE	LAMP BOTTOM	3		
	BLUE	LAMP 3TH FROM BOTTOM	4		
J2	ORANGE	POWER 12VDC	1	03-09-2022	
	BLACK	POWER GROUND	2		
J3	TINNED STRAP	EARTH BONDING STRAP	-	-	RING TERMINAL 4mm
J4	BLACK	GROUND	1		
	WHITE	TXD/RXD	2		

IMPORTANT:1>SHUT-OFF THE POWER FROM THE HOST MACHINE UNTIL ANY  
INSTALLATION WORK IS COMPLETED  
2>POWER SUPPLY MUST BE 12VDC,2 AMP.

# RGB TOPPER

## Setting colour for RGB Topper

You may select colours of flashing on the illumination cover out of the seven pre-set combination. Every time the COLOUR button on the main control board was triggered, the topper will switch to next colour set. Seven colour sets were defined as follow:

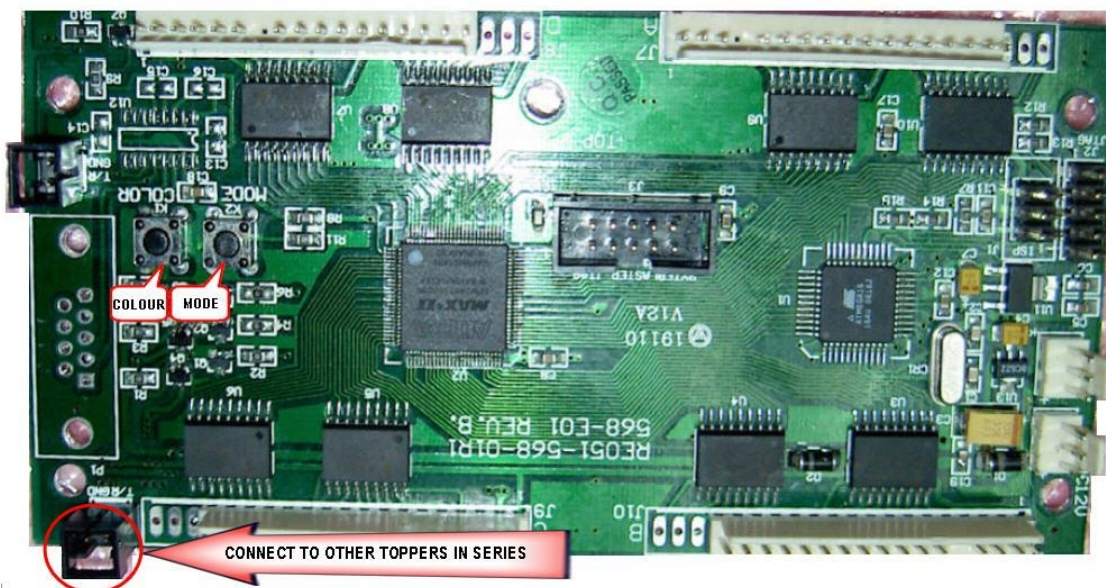
1. Red - Blue - White (Default setting)
2. Green - White - Red
3. White - Yellow - Red
4. Yellow - White - Blue
5. Blue - Purple - White
6. Green - Blue - Yellow
7. Green - Red - Blue

## Setting flashing pattern for RGB Topper

Once powered up, Topper will light up and cycle through seven pre-programmed flashing patterns. You can switch to next flashing pattern by pressing MODE button once.

## Toppers connected in series

If Toppers are connected in series, you can perform above setting on any one of the toppers in series. Press MODE button once, all toppers in series will be synchronized in same colour set and flashing pattern.



Topper  
Control  
Board

# RGB TOPPER

Ballast, 22-0138, used on RGB topper complies with UL and CE regulations.

You may search UL certificate information through website <http://database.ul.com> with with UL file no. E309359

**ATC**<sup>®</sup>

**CERTIFICATE**  
of Conformity  
EC Council Directive 73/23/EEC  
as last amended by EC Directive 93/68/EEC  
Low Voltage Directive

Registration No.: ATS2005328 002

Applicant: Dynamics Chinatex Industries (HK) Ltd.  
809-810 Block A, Hoi Luen Ind. Ctr.55, Hoi Yuen Road, Kwun Tong  
Kowloon, Hong Kong

Product: DC Electronic Ballast


Identification: Model No. : 22-0138  
Serial No. : n.a.  
Rating : 22-0138: DC12V, 11W

Standards: EN 61347-1:2001  
EN 61347-2-4:2001

The certificate of conformity is based on an evaluation of a sample of the above-mentioned product. Technical report and documentation are at the applicant's disposal. This is to certify that the tested sample is in conformity with all provisions of Annex I of Council Directive 73/23/EEC, in its latest amended version, referred to as the Low Voltage Directive. This certificate does not imply assessment of the production and does not permit the use of ATC's logo. The applicant of the certificate is authorized to use this certificate in connection with the EC declaration of conformity according to Annex III of the Directive.

Certified by  
  
Sam Dong

November 14, 2005  
Date



CE

The CE Marking may only be used if all relevant and effective EC Directives are complied with.

ACCURATE TECHNOLOGY CO. LTD - F1, Bldg. A, Changyuan New Material Port, Keyuan Rd.  
Science & Industry Park, Nanshan Dist., Shenzhen 518057, P.R. China  
Tel.: +86-755-2650 3290 Fax: +86-755-2650 3396 E-mail: webmaster@atc-lab.com

**ATC**<sup>®</sup>

**CERTIFICATE**  
of Conformity  
EC Council Directive 89/336/EEC  
as last amended by EC Directive 93/68/EEC  
Electromagnetic Compatibility

Registration No.: ATE20051871 002

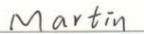
Applicant: Dynamics Chinatex Industries (HK) Ltd.  
809-810 Block A, Hoi Luen Ind. Ctr.55 Hoi Yuen Road, Kwun Tong,  
Kowloon, Hong Kong.

Product: DC Electronic Ballast


Identification: Model No. : 22-0138  
Serial No. : n.a.

Standards: EN 55015: 2000 + A1: 2001 + A2: 2002  
EN 61547:1995+2000

The certificate of conformity is based on an evaluation of a sample of the above-mentioned product. Technical report and documentation are at the applicant's disposal. This is to certify that the tested sample is in conformity with all provisions of Annex III of Council Directive 89/336/EEC, in its latest amended version, referred to EMC Directive. This certificate does not imply assessment of the production and does not permit the use of ATC's logo. The applicant of the certificate is authorized to use this certificate in connection with the EC declaration of conformity according to Article 10.1 of the Directive.

Certified by  
  
Martin Lü

Nov. 7, 2005  
Date



CE

The CE Marking may only be used if all relevant and effective EC Directives are complied with.

ACCURATE TECHNOLOGY CO. LTD - F1, Bldg. A, Changyuan New Material Port, Keyuan Rd.  
Science & Industry Park, Nanshan Dist., Shenzhen 518057, P.R. China  
Tel.: +86-755-2650 3290 Fax: +86-755-2650 3396 E-mail: webmaster@atc-lab.com

**Note:** The specifications and information contained here are for quick reference only and are subject to change without notice. For detail product specification, please refer to formal product documentation.