






# Global Contract Manufacturing Services

Low Volume High Mix Specialist

# Overview

## Services

-  Design and prototyping
-  Injection tooling
-  Injection molding
-  PCB board assemblies
-  Assembly

## Products

- Coin & Currency Handling
- Display Solutions
- Control Devices
- Toppers
- Reel Mechanisms
- Printers
- Spare Parts

## Markets

- Casino Gaming
- Amusement
- Transportation
- Vending
- Industrial

## Key Statistics

### Global

<b>Revenue</b>	\$120 million
<b>Locations</b>	12
<b>Countries</b>	6
<b>Customers</b>	Over 10,000
<b>Countries Served</b>	80

### Factory

<b>Location</b>	Zhuhai, China
<b>Status</b>	Free Trade Zone
<b>Facility</b>	130,000 sq. ft. 12,077 sq. m.
<b>Employees</b>	275
<b>Certification</b>	ISO 9001
<b>Established</b>	1993

# **Global Contract Manufacturing Services** **Low Volume High Mix Specialist**

**Global Quality Standards**  
**Local Support**  
**Value Leader**



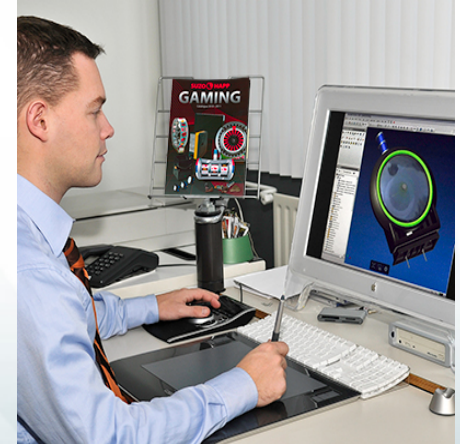
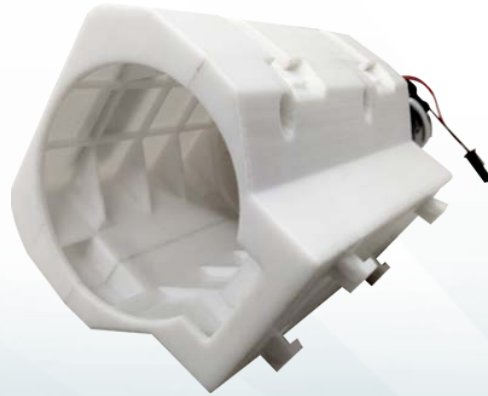




# Design & Prototyping

## Equipment

- CAD Workstations
  - Pro/Engineer
  - SolidWorks
  - AutoCAD
- FDM Prototyping Machine (3D Printing Technology)



## Capabilities

- Quick turn-around
- In-house prototyping

## Resources

- 12 Engineers
  - Electrical Engineering
  - Mechanical Engineering
  - Software Engineering





# Tooling

## Equipment

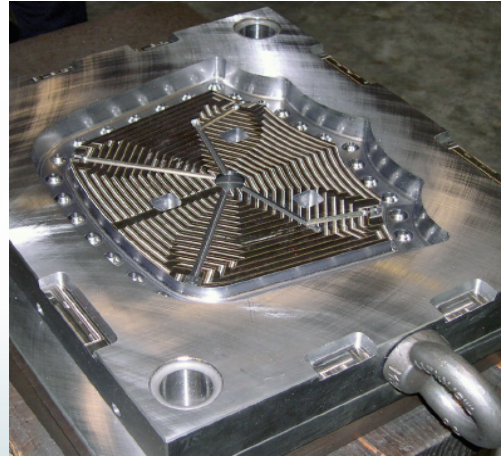
- 5 – CNC milling
- 3 – Lathes
- 2 – Grinding
- 1 – Wire EDM

## Capabilities

- Design to 1<sup>st</sup> Shot - *10 days*
- 15 tools per month

## Resources

- 20 Dedicated Staff
- +10 Flex Staff







# Injection Molding

## Equipment

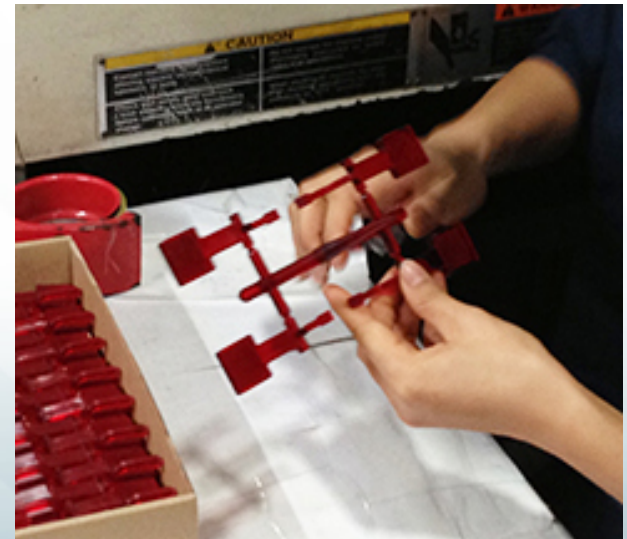
- 28 machines

## Capabilities

- 21 – 470 tons
- 20 million pieces per year
- 24 hour operation
- Insert and over-molding

## Resources

- 45 Dedicated Staff
- +25 Flex Staff





# PCB Board Production

## Equipment

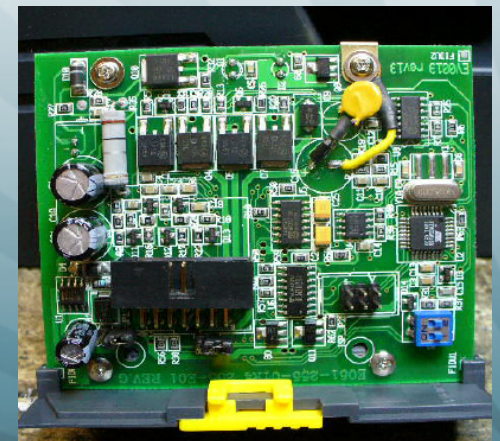
- SMT High Speed Mounter
- SMT Inspection
- Wave Solder

## Capabilities

- Surface mount
- Thru-hole
- 50,000 boards per month

## Resources

- 25 Dedicated Staff
- +15 Flex Staff







# Assembly

## Equipment

- 6 Conveyor lines
- 4 Work station cells

## Capabilities

- 50 assemblies per hour per line/cell

## Resources

- 100 Dedicated Staff
- +100 Flex Staff







# Global Quality Standards

- ISO 9001
- 99% quality passing rate
- 98% on-time delivery
- Trained quality control staff
  - Incoming: 9 Full Time Staff
  - Process: 7 Full Time Staff
  - Finished: 8 Full Time Staff



# Customers



# Products

