

CHECK OUT OUR RANGE OF LIGHTING OPTIONS!

FLUORESCENT LAMPS



F15T8 18"
Cool White Economy
Fluorescent Lamp

Part Number: 91-3008-03

- 15W
- LED equivalent 91-0549-00
- Minimum order quantity: 25

F8T5 12"
Cool White Economy
Fluorescent Lamp

Part Number: 91-3002-10

- 8W
- Minimum order quantity: 50



F6T5C 9"
Cool White Economy
Fluorescent Lamp

Part Number: 91-3001-10

- 6W
- Minimum order quantity: 50

WHITE LEDs WEDGE BASE



SUZOHAPP 6V/12V
Economy White LED
T1-3/4 Wedge Base

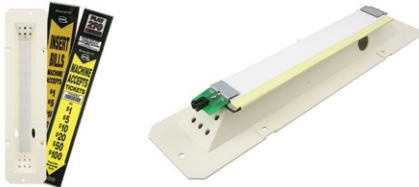
Part Number: 161-205059 6V
161-212059 12V

- Great for use on illuminated pushbuttons including poker / VLT pushbuttons
- LEDs are maintenance free, lasting an average of 100,000 hours
- LEDs can reduce power consumption up to 80%
- T 1-3/4 will also fit T 1-1/2 bases
- Designed for drop-in replacement
- LEDs are equipped with a resistor

Contact Your Sales Representative to Order Now!

LED EDGE-LIT PANELS**Konami Belly Glass LED Edge-Lit Panel****Part Number: 70-36599-00**

- Replacement for all Konami Belly Glass currently Edge-Lit with Cold-Cathode Lamps
- Powered by 12 volts directly
- LEDs will not break when the Drop Crews let the door drop and then slam it closed
- Sizes: roughly 18" x 7" rectangular shape

**Light Pro Edge-Lit LED Panel For IGT Denom Arrow Panels****Part Number: 70-36588-00***

- For use as side light in IGT Game King Round Top or Square Top, Game King 17" Upright Chop Top, and I Games
- Dramatically improves the lighting of the arrow panel providing improved color dispersion without shadows
- Includes LED edge-lit panel installed on rugged plastic housing for easy installation (graphic panel not included)
- Energy efficient panel only requires +12VDC 200 mA of power
- Low heat generation, 70% lower power consumption
- Easy to install, plugs directly into existing circuit board harness
- Size: 13-1/8" L x 3-1/8" W x 1-1/4" D
- 5-8 year life span
- 3-year warranty on LED circuit

This LD panel does not include the IGT glass overlay*IGT Bartop & WMS Bluebird 1 Light Pro Edge-Lit LED Panel (Upright Lower Display)****Part Number: 70-36587-00***

- For use in IGT Bartop games and WMS Bluebird 1 lower display
- For IGT Bartop games as is - No Adapter Harness Needed
- For WMS Bluebird I Combo Top Box & Lower 3"x 4" Illumination Panel (must also purchase 70-36590-00 & 70-0215-00)
- Dramatically improves the lighting of the game legend panel providing improved color dispersion without shadows
- Energy efficient LED panel requires +12VDC 100 mA of power
- Low heat generation, 70% lower power consumption
- Easy to install, no tools required, plugs directly into the existing lamp connectors
- LED panel size: 4" W x 3" H (102mm x 76.4mm)
- 5-8 year life span
- 3 Year Warranty on LED circuit

LED panel only - Tray and graphic panel not included*Universal LED Edge-Lit Panel 17 x 6****Part Number: 70-36589-00**

- Energy efficient panel only requires +24vdc 210 mA of power
- Eliminates the use of lamps, which frequently burn out
- Low heat generation, 70% lower power consumption
- 1-year warranty on LED circuit

Contact Your Sales Representative to Order Now!

SUZOHAPP · 1385 Pama Lane Unit 100, Las Vegas, NV 89119 - sales@suzohapp.com - na.suzohapp.com