

SUZOHAPP

suzohapp.com

AMUSEMENT & VENDING

Valid Thru 11/31/2015

Rock Out This Fall With SUZOHAPP!

TouchTunes 19" ELO LCD Replacement Kit for Allegro, Ovation & MX1



- Replacement for 300153-001 unit
- This new unit use ELO LCD and SAW touch screen.
- The touchscreen part number is E793323 (SCN-IT-SFP19.0-008-000-R)
- TouchTunes part number for touchscreen only is 400757-001



TouchTunes

\$579.93 ea.

600075-001

Black MTX Indoor/Outdoor Speaker MP42B



- Great for outdoor locations; bars, restaurants, boardwalks, even at home
- Sleek, Euro-style design for aesthetic appeal to complement any decor
- Weather resistant design utilizing Butyl surrounds with polypropylene cones
- Magnetically shielded
- Includes rotating mounting stainless steel brackets with end-caps
- Available in either White or Black color
- Tweeter 1/2" balanced dome
- Frequency Response 100Hz - 20Hz
- Impedance 8 Ohm
- Power 50 W RMS/ 200 W Peak



MTX
SERIOUS ABOUT SOUND

\$81.40 ea.

49-0780-16

Kiosk Audio Amplifier Kit



- Ideal to amplify audio sound for use within a kiosk environment
- 2 Channel Amplifier
- Approx. 8 Watts RMS per channel 10% THD (10 Watts RMS @ 16v Input)
- Compact Size: 4.25" L x 3.38" W x 2.24" H
- Mounts easily to vertical or horizontal surfaces within cabinet



\$49.99 ea.

49-5140-200K

CD-PRO II Player With Universal Hub



- The CD Pro 2 is drop-in compatible with any jukebox currently loaded with a CDM-12 Industrial, CD Pro, or CD Pro 2
- Comes with NSM hub installed, but additional universal no-glue centering hub provided will work with all other models
- 1 Year Warranty
- Does not replace CDM-3 or CDM-4 players
- Instructions included
- Shipped in non-static bag
- Manufactured by Philips



\$415.00 ea.

95-1683-01

Kiosk Audio Amplifier



- Ideal to amplify audio sound for use within a kiosk environment
- 2 Channel Amplifier
- Approx. 8 Watts RMS per channel 10% THD (10 Watts RMS at 16v Input)
- Volume control can be easily adjusted with fingers Ideal to amplify audio sound for use within a kiosk environment
- 2 Channel Amplifier
- Approx. 8 Watts RMS per channel 10% THD (10 Watts RMS @ 16v Input)
- Volume control can be easily adjusted with fingers



Part Number	Description	Price per ea.
49-5140-00	Kiosk Audio Amplifier -Without Enclosure	\$39.95
49-5140-100	Kiosk Audio Amplifier -With Enclosure	\$39.95

IR Remote Transmitter for Rowe DL, 4 Channel



- 4 channel replacement IR remote transmitter
- For Rowe internet jukeboxes StarBrite, NiteStar, NiteHawk, Rock-Star, NGX



\$42.95 ea.

21958306

4" Round Speaker Grille



- Metal mesh grille
- 4-1/2" center-to-center mounting holes
- Color: Black



\$3.80 ea.

49-5181-00

2 wire Speaker Wire



- Comes on spools of 250'



Part Number	Description	Price ea. L/250
49-0534-00	18 Gauge - Speaker Wire	\$0.21
49-0534-01	18 Gauge - Zip Cord Speaker Wire - Brown	\$0.21
80-0149-00	16 Gauge - Zip Cord Speaker Wire - Clear	\$0.25

Dual Volume Control for Rowe Jukebox



- For Rowe Jukeboxes
- Two separate volume controls allows you to "balance" the sound
- Cancel button to reject current play



\$25.95 ea.

H30632209R

TouchTunes 514B Handheld Microphone



- For use with For use with Genesis, Rhapsody, Ovation, Maestro, Allegro, MX, & Virtuo Jukeboxes



TouchTunes

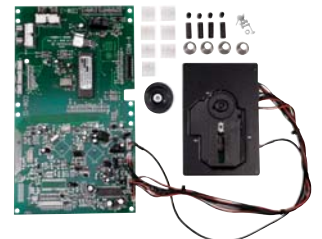
\$107.00 ea.

700106-001

Jukebox CD Player Upgrade Kit for Rowe CDM 4 or CDM 12



- Drop-in replacement at location
- High quality Sanyo player utilizing Sony technology virtually eliminates skipping of CDs
- Manufacturers Warranty - 1 year on Decoder Board - 2 years on CD Player
- 24 hr. tech support
- Lower your investment costs
- New universal lightweight hub
- Easy installation (under 30 minutes)
- Made in USA by Digital Micro
- 90 Day Satisfaction Guarantee



\$249.95 ea.

95-1998-00

Replacement Belts for Rowe Machines



Part Number	Description	Price ea. L/250
35118601	Replacement Rowe OBA2 Belt 9.78 Top - Clear	\$3.99
35114901	Upper Belt Drive for Rowe 3500 Changer - Black	\$7.43
35082007	Timing Belt for Rowe BA 50, 210 Teeth - Orange	\$7.99

MTX Thunder Pro TP1200 2-Way 12" Professional Loudspeaker



- Ideal for use in bars/night clubs, restaurants, family entertainment centers and casinos
- Speaker consists of a single 12" woofer matched with MTX's X-radial designed horn loaded high frequency tweeter. Designed to provide uniform sound dispersion and coverage area with excellent sound quality



\$111.00 ea.

49-2927-00

JBL Control 25 Compact Indoor/ Outdoor Speaker with Built-In Mounting Kit



- 5.25 inch, 2-way System
- Sold in pairs only; Price is per each
- JBL premium high fidelity sound quality
- Exclusive SonicGuard Overload Protection guards against damage from overpowering



\$282.95 ea.

49-1125-00

8" American Acoustic 2-Way Deluxe AAL Series Speaker by MTX



- Ideal for use in commercial settings such as bars, restaurants, family entertainment centers, casinos and arcades
- Manufactured with quality components giving the speakers great sound quality
- Color: black
- Sold in pairs



96-0196-0B

\$139.95 ea.

DPI 8" 2-Way Carpeted Speaker, DPI-800C



- Polymer treated woofer and high dispersion, acoustical tweeter generates terrific sound
- Auto reset circuit breaker prevents speakers from blowing



\$52.95 ea.

50-9983-00

4" Unshielded Speaker, 8 OHM, 8 W



\$2.65 ea.

50-9000-00

MTX Thunder Pro TP1100 10" 2-Way Professional Loudspeaker



- Ideal for use in bars/night clubs, restaurants, family entertainment centers and casinos
- Speaker consists of a single 10" woofer matched with MTX's X-radial designed horn loaded high frequency tweeter, which is designed to provide uniform sound dispersion and coverage area with excellent sound quality



\$109.00 ea.

49-6556-00

JBL Control 28 High Output Indoor/ Outdoor Speaker with Built-In Mounting Kit/ Sold per Pair



- 8 inch, 2-way System
- Premium JBL quality
- Components: 8" Polypropylene coated woofer, 1" Titanium coated horn loaded tweeter
- Overload protection circuitry



\$489.00 ea.

49-1124-00

JBL Stereo Input Dual Coil Subwoofer



- Provides low frequency reinforcement in subwoofer / satellite systems
- Ideal for foreground music and music/paging systems in family entertainment centers, restaurants, retail establishments, theme bars, etc.
- Superior musical clarity and bass impact



\$293.00 ea.

49-1123-00

MTX 6-1/2" Monitor Series 60i Dual 2-Way Bookshelf Speakers



- The Monitor 60i offers exceptional sound performance, which makes it ideal for use in either jukebox or home theater systems
- Manufactured with high-grade components, the speakers produce superb sound quality



\$143.00 ea.

96-0756-00

6 x 9" Shielded Speaker, 8 Ohm, 15W



\$6.95 ea.

5555-15298-00



SUZOHAPP

**The Exclusive
Amusement Distributor
of Wells-Gardner LCDs in
the U.S.!**



- **Global manufacturer and distributor of LCD flat panel monitors**
- **Leading supplier to coin-operated video game manufacturers**
- **LCDs designed for excellent performance and value for the amusement market**
- **Enhanced ColorFacts trade secret process maintains high color consistency across all display products**
- **1 year warranty on LCDs**

Part Number	Description	Price per ea.
49-3223-00	19" Wells-Gardner Open Frame LED LCD with AUO Panel (TN) CGA/VGA	\$240.00
49-3224-00	19" Wells-Gardner Open Frame LED with AUO Panel (TN) with Optera Sensor and EETI Controller L/C	\$339.00
49-3222-00	22" Wells-Gardner Open Frame LED Monitor with Samsung TN Panel, Optera Sensor, and 3M Controller	\$416.00
49-3221-00	22" Wells-Gardner Open Frame LED Monitor with Samsung Panel	\$255.00
49-02359-00	23" Wells-Gardner Open Frame LED LCD with Samsung FHD (PR) Panel	\$260.00
49-2958-00	27" Wells-Gardner Open Frame LED with Samsung Panel VGA/DVI (PR) FHD	\$464.00
49-3258-00	32" Wells-Gardner Open Frame LED LCD HD Panel with VGA and DVI Inputs	\$386.00
49-4259-00	42" Wells-Gardner Open Frame LED LCD Panel with VGA and DVI Inputs	\$620.00
49-2959-00	Wells-Gardner CGA Adapter Kit for 27" LED LCD 49-2958-00	\$15.00
49-2960-00	Wells-Gardner Bezel Kit for 27" LED LCD 49-2958-00	\$82.50



SUZOHAPP 29" Pump Action Shotgun

- Direct replacement for guns used on Raw Thrills Big Buck Hunter Pro with 6-pin rectangular connector
- SUZOHAPP Engineered and Manufactured, with the quality that you have come to expect



CHERRY
SUZOHAPP

Part Number	Description	Price per ea.
96-0476-13	Pump Action Shotgun - Green	\$159.95
96-0476-17	Pump Action Shotgun - Orange	\$159.95

Opto Board for 27" Shotgun

- Used on 27" CRT Cabinets of Big Buck Hunter Pro, Big Buck Safari, Big Buck Open Season and Big Buck World
- Works on Big Buck Safari 27" CRT Version Only (42" LCD version uses different sensor board 820-00010-01)



\$27.85ea.

474458B

Optic Gun PCB for 27" Shotgun

- Works on Extreme Hunting (Do not use for Incredible Technologies games)



\$36.95 ea.

95-1019-SG

Big Buck HD Gun Trigger and Pump Printed Circuit Board

- PCB has Pump switch and Trigger switch mounted to the PCB along with a Black Connector for USB along with the Connector for the Camera Module (Sold Separately)



\$155.00 ea.

500-00095-01

Sensor Board for Gun for Sega/Sammy

- Used on Lost World and House of Dead



\$206.00 ea.

JPT-2030

45 Cal. SUZOHAPP Optical Gun Assembly

- Utilizes the Type II gun halves
- New innovative optic PCB has innovative optic can holder that securely holds the optic in place and prevents breakage of optic legs due to shock



SUZOHAPP

Part Number	Description	Price per ea.
96-2300-10	Optical Gun Assembly - Red	\$65.95
96-2300-12	Optical Gun Assembly - Blue	\$65.95

Reload Insert for Raw Thrills Rifle

- Reload Insert for Raw Thrills Rifle



\$4.80 ea.

96-0983-00

Barrel Nose Piece

- Used on Big Buck Hunter Pro and Safari
- Not interchangeable with SUZOHAPP guns (except for 96-0068-00 and 95-4142-10)



\$3.50 ea.

47-4460-01

Big Buck Hunter HD Shotgun Parts Kit

- Kit includes: 600-00853-01 BBHD Gun Pump Stop, 600-00856-01 BBHD Gun Trigger, 600-00857-01 BBHD Gun Trigger Spring, 600-00858-01 BBHD Gun Pump Spring, 600-00859-01 BBHD Gun Spring Stop Washer, 600-00860-01 BBHD Gun Trigger Guard, 600-00861-01 BBHD Gun Pump Rod, 600-00862-01 BBHD Gun Switch Shim



\$11.88 ea.

999-00002-01

Trigger and Pump Switch Assembly with Harness for Sammy Shotgun

- For use on Turkey Hunter Game by American Sammy



\$7.70 ea.

96-0318-00

Power Supply for Merit MegaTouch

- Replacement for Merit MegaTouch XL
- AT style with fan and remote switch
- Manufacture Reference EC7528-02
- +5v 26A, +12v 9A, -5v 0.5A, -12v 0.5A
- 250 watt

**\$62.99 ea.**

80-0312-00
Black Pushbutton with Horizontal Microswitch

- Fits wood or metal control panels
- New longer design: Easier to use within 3/4" wood control panels with Lexan
- Microswitch reliability tested to 10,000,000 cycles


SUZOHAPP
58-9166-L
\$1.35 L/25**Kessler-Ellis 6-Digit Meter, 12V DC, without Bracket, with Diode**

- Electric, non-resetable counter
- 6 digit, counts to 999,999 then repeats
- 600 counts per minute
- Without mounting bracket
- With diode
- 10" wire leads
- Merit Ref. EC9154-02
- KEP Ref. KE610AF10DC12
- Wells-Gardner Ref. 823-1011-00



42-6914-00

\$6.85 ea.**CPU Cooling Fan for Merit Force**

- CPU cooling fan for Merit Radion Force, Trivia, Vibe
- 3-wire (red, black, yellow) ball bearing fan with connector
- Replaces Merit EC940101
- RoHs compliant
- Size: 2.36" x 2.36" x .39" (60mm x 60mm x 10mm)
- 12V, 0.06 amps, 4700 RPM, 23.30 CFM

**\$6.19 ea.**

80-0006-41

LCD Conversion Kit for Merit Force Cabinets

- Re-energize your old Force cabinets and return them to profitability
- Replace the outdated and obsolete CRT monitor with a new fresh integrated 15" LCD
- LCD's provide your route with longer life with no burn in found in CRT monitors
- Every kit comes with all the necessary components to convert: - 15" Integrated LCD with 3M touch screen utilizes existing 3M controller in old cabinet - CRT to LCD adaptor bezel - Mounting brackets & hardware
- Installation is simple and can be completed at any location
- LCD comes with a 1-year standard warranty

**\$415.00 ea.**

49-2885-00

17" 3M Cleartek Flat Touch Screen for Merit Fusion

- Screens are high impact and scratch resistant
- Ideal for use in Amusement, Gaming and Kiosk Industry
- No drift or recalibration required
- Screens are unaffected by environmental factors; moisture, rain or temperature
- Surface finishes are anti-glare and anti-reflective
- Touch Durability: 50 million touches in a single location
- Flat OGA 19.12", VA 18.40", PA 17.34"


\$132.95ea.

49-2271-00

Cooling Fan for Merit XL Series

- Cooling fan 12V DC
- Size: 1.57" x 1.57" x 0.39" (40mm x 40mm x 10mm)
- Vapo bearing
- 3-wire connection

**\$7.70 ea.**

80-0006-16

300 Watt Power Supply Kits for Merit



- Can be used on the following EVO games: ION, ION Elite Edge and ION Walleto
- 300 Watt with PFC
- AC INPUT 100-240V- / 5-2.5A / 60-50Hz
- DC OUTPUT +3.3V/13A, +5V/14A, +12V/23A, -12V/0.3A, +5Vsb/2A
- May also be used in general kiosk applications



Part Number	Description	Price per ea.
SB0539-01R	300 Watt Power Supply Kit for Merit ION Aurora	\$82.95
SB0539-02R	300 Watt Power Supply Kit for Merit ION Aurora	\$89.95

Power Supply for Ion Games



- Original power supply used by Merit for ION games
- Works on the following Merit games: Walleto ION, Fusion ION, EVO ION, Edge ION
- Can also be used on Rowe Nighthawk
- Merit ref# EC7538-01
- Size: 5-7/8" Long x 3-1/4" wide x 1-5/8" High
- AC Input: 115/230V~,5/3A,60/50Hz
- MAX. Output power: 200W (max. ambient 35°C) (+3.3V & +5V=75W Max) (+3.3V & +5V & +12V=186.5W Max)
- Output power 150W (max. ambient 50°C) (+3.3V & +5V=61.5W Max) (+3.3V & +5V & +12V=186.5W Max)
- 1-Year warranty
- Power cord not included



\$48.85 ea.

80-0312-10

19.06" 3M MicroTouch Cleartek Touch Screen, Sensor Only



- Transparent coating significantly increases durability by resisting scratches and abrasions
- Performance unaffected by everyday contaminants in the environment
- Accurate and fast touch response
- Narrow border for easy integration
- Connects to the new EX II electronics platform
- Taped wires Click here to view 3M Technical details (Drivers, Drawings, etc)
- Ref. No.17-8411-206
- Used on AMI, Merit, Rowe

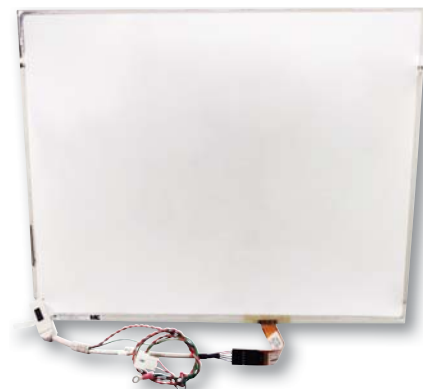


MicroTouch
3M
49-2931-00

3M MicroTouch Cleartek 2 Flat Touch Screen



- Measures 19.06 inches
- Used on Merit SMS



MicroTouch
3M
49-2931-10

19.06" 3M MicroTouch Cleartek Touch Screen, Sensor Only



\$12.29 ea.

MP0121-02

Pinball Parts

VISHAY 128 x 32 Dot Matrix Display for Pinball Games



- 128 x 32 dot matrix display
- This is the standard plasma style dot matrix display Plug and Play complete module replacement for all Williams pinball game machines, Sega, Data East, Bally, Gottlieb, new Stern, Alvin G and Capcom pinball machines



\$169.89 ea.

49-7003-3

Flipper and Shaft Assembly for Williams



- Replaces 20-9264-610
- RoHS compliant
- Used on Williams pinball games
- Also used on Namco Flick Derby game



Williams **W**

Part Number	Description	Price per ea.
20-9250-5	Flipper and Shaft - White	\$3.95
20-9250-6	Flipper and Shaft - Yellow	\$2.95

MTX Thunder Pro TP1100 10" 2-Way Professional Loudspeaker



- For all pinball games
- Chrome bezel and black knob with black tip
- Simply mount to cabinet



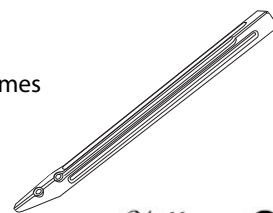
\$18.70 ea.

95-0086-00

Chrome Leg Assembly for Williams Pinball



- Standard 28-1/2" ribbed pinball machine leg with chrome finish
- Sturdy, heavy duty construction
- Used on Williams, Bally, and other games



Williams **W**

A-19514

\$11.99 ea.

Driving Controls

Heavy-Duty Urethane Steel Timing Belt for Active Steering Wheel



- Increased belt durability achieved with this Urethane Steel belt on SUZOHAPP active steering wheels
- Direct replacement for original Black belt (50-4041-00)



\$8.99 ea.

50-4041-90

Microswitch DB 90 Gram Force Gold INT Contact 110 Term .1A



- For individual replacement of switches for Pinball switch, 4-Speed Shifters
- High CHERRY Quality switch
- DA3, 110 terminal, Gold Contact 90 Gram (standard) actuating force
- Switch color: Black



CHERRY

\$0.94 ea. L/500

\$0.97 ea. L/100

95-4118-90

Molded Seat for Midway Games



- Original Midway seat for Rush 2049
- Made of black molded plastic
- This seat does not use a slide assembly — It uses individual slide rails (part #s 50-3120-00 and 50-3090-00)
- Dimensions:
33.5" H x 29.13" D x 19.54" W



MIDWAY

Part Number	Description	Price per ea. L/3	Price per ea.
04-12674	Molded Seat - Black	\$156.80	\$179.00
04-11100	Molded Seat - Teal	—	\$175.00

Aluminum Pulley with Set Screw for Steering Wheel



- 3/8 Bore with Set Screw (for set screw see part 43-0671-00)
- 1/5 Pitch
- 16 Teeth
- Used on Need for Speed and Global VR Force-Feedback Wheel



\$15.95

50-4040-00

Are You Operating ATMs?



- \$ More than 70% of the U.S. population has an ATM Card**
- \$ ATMs can help reduce or limit retailer credit card fees**
- \$ Customers seek out locations with ATMs**
- \$ Retailers retain 30% - 40% of cash withdrawn**
- \$ Bars & Clubs retain 70% - 80% of cash withdrawn**

28-0004-12

28-0003-11

28-0004-11



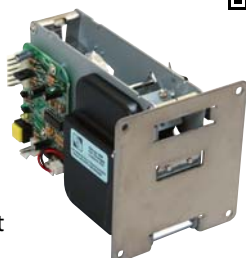
Part Number	Description	Price per ea.
28-0004-12	Hyosung Halo II ATM Series, 1000 Note, EMV Card Reader, E-Lock	\$2,195.00
28-0003-11	Genmega G2500 ATM with 1000 note cassette, EMV Reader & E-lock	\$2,216.67
28-0004-11	Hyosung 2700 ATM with 1000 note cassette, EMV Reader & E-lock	\$2,427.78

Coin & Currency Supplies

Entropy 2000 Ticket Dispenser Continuous Type (TD963CR)



- Reduced ticket jams
- Easy to remove front plate
- Covered optic sensor
- Ticket feed button for easy ticket loading
- Direct compatibility to all major ticket dispensers on the market



\$86.95 ea.

42-1337-00

Ticket Dispenser Door without Dispenser & LED



- Sturdy die cast aluminum frame: a SUZOHAPP exclusive!
- Door and dispenser conform to all industry standards
- Has .156" hole for low ticket LED



\$34.99 ea. L/10

\$38.99 ea.

SUZOHAPP

40-0540-00

6 Digit KEP Meter 12V DC 6 DIGIT with Diode, Bracket, and .093" Molex Plug



- 6 digit meter
- 12 volt
- 2 watts
- .093 Molex connector
- Brackets and diode included



\$5.86 ea.

42-1000-00

Coin Wrappers for All Major Coin Demoniations

- Top quality weatherproof paper
- Tubular wrapper open with ease
- For that extra touch, imprint your name on the wrappers. No question whose money it is
- Sold per 1,000 only

Part Number	Description	Price per ea.
27-1155-00	Penny - 1¢ Cent Coin Wrappers - 50¢ Capacity	\$4.95
27-1046-00	Nickle - 5¢ Cent Coin Wrappers - \$2.00 Capacity	\$4.95
27-1045-00	Dime - 10¢ Cent Coin Wrappers - \$5.00 Capacity	\$4.95
27-1020-00	Quarter - 25¢ Cent Coin Wrappers - \$10.00 Capacity	\$5.05

Replacement PCB for Entropy 2000 Continuous Type Ticket Dispenser



- PCB for Entropy 2000 ticket dispenser - continuous type 200-963C-00
- Will also work as replacement for Deltronics DL-1275 PCB



\$24.95 ea.

A070-1010-00

Cassida C500 Coin Counter with Off Sorter, 110V



- Giant Features in a Compact Counter : The Cassida C500 combines the features most demanded in a coin counter into one tough, compact, and portable machine
- Fast, Accurate, and Reliable: The C500 accurately counts and bags multiple denominations from its 4,000-coin hopper at over 2,000 coins per minute



Cassida
CORPORATION

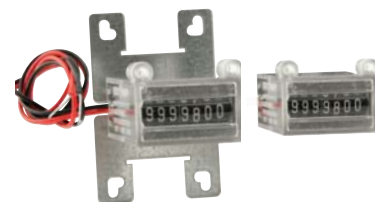
\$482.00 ea.

80-1050-C500

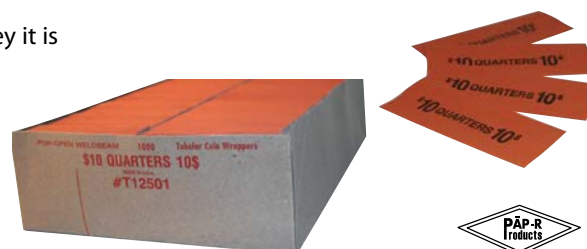
SUZOHAPP 7-digit Meter with Magnification Lens



- 7 digit non-resetable
- Display digits size .153" (3.9mm)
- Low cost, small size
- Rugged ABS clear case with Magnifying lens



Part Number	Description	Price per ea.
42-08012-07	7-digit Meter with Magnification Lens - Without Backet	\$8.70
42-08012-071	7-digit Meter with Magnification Lens - With Backet	\$6.70



9 Watt Condenser Fan Motor, Cast Iron, Clockwise



- Cast Iron
- UL/CSA listed



\$15.99 ea.

27-1001-00

Nyliner Bearing for Rowe



\$0.49 ea. L/10

H70146006R

Cold Control for Rowe 448 Machines



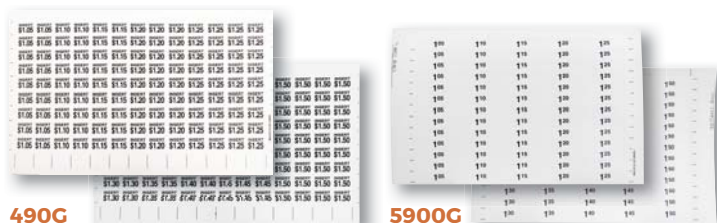
- Includes knob
- For use on Rowe 448, 448E, 448E2
- Ref. 448-1829



\$12.99 ea.

H4481829R

Price Sheets for Rowe Machines



490G

5900G

Part Number	Description	Price per ea.
490G	Price Sheet \$1.05 Thru \$1.50 - "Insert"	\$1.40
5900G	Price Sheet \$1.05 Thru \$1.50 - Blank	\$1.40

Head and Holder Assembly for Rowe BA-50



\$103.00 ea.

H45073101R

LED Holder Assembly Emitter for Rowe Bill Changer



- For BC 100, 1200, 3500
- Ref. No. 45076101



\$22.99 ea.

45076101

T-Handle



- Fits Chicago Lock and other T-Handles
- Can be used with studded or .25 turn T-Handle
- Will accept all standard inner cylinder locks
- Matte finish



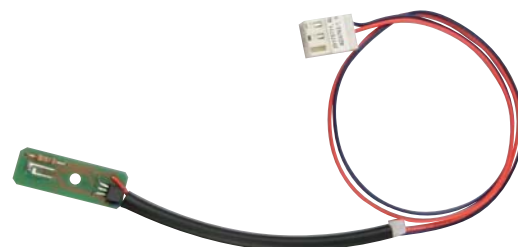
\$3.99 ea.

30-0183-00

Photo Detector with Terminal for Rowe



- Terminates in Amp style 2-pin connector
- Detects coins in Rowe BC 100, 1200, 1400, 3500
- Ref. No. 25175702



\$39.99 ea.

25175702

SUZOHAPP

1743 Linneman Road
Mount Prospect, IL 60056

Toll Free Phone: 888-289-4277

Toll Free fax: 800-593-4277

Las Vegas: 888-289-4277

Presorted Standard
US Postage
PAID
Permit No. 11
Palatine P&DC, IL

suzohapp.com



Safe sign-up for email
on sales & promos not
available in our print
flyers!



To be removed from our mailing list fax this page to 800-593-4277
Flyer Pricing Subject to Change Without Notice

SUZOHAPP Billiards Specials

Bumper Ring for Bumper Pool



Part Number	Description	Price per ea.
26-0459-00	White	\$0.45
26-0460-00	Red	\$0.45

Black Leather Pea Shaker

- Fine looking black leather pea shaker
- Opening diameter is 1 1/8"



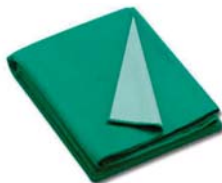
\$6.25 ea.

26-0442-00

19 oz Pre-Cut 7 ft. Pool Cloth



26-1599-00



26-1534-317B



Part Number	Description	Price per ea.
26-1599-00	Mercury Ultra, Tournament Green - Unbacked	\$65.00
26-1534-317B	Championship Valley Teflon Ultra, Tournament Green - Backed	\$89.00

Championship Invitational Fast Pack Complete Bed & Rail Sets, 7 Ft - Green, Backed

- Convenient - no measuring or cutting required, no rails to strip and cut, eliminates measuring and cutting errors, 100% usable, no wasted material!



\$68.00 ea.

26-1276-00

Order 3 Ways - Web
suzohapp.com

Call
888-289-4277

Fax
800-593-4277