

SUZO HAPP

TOPPERS

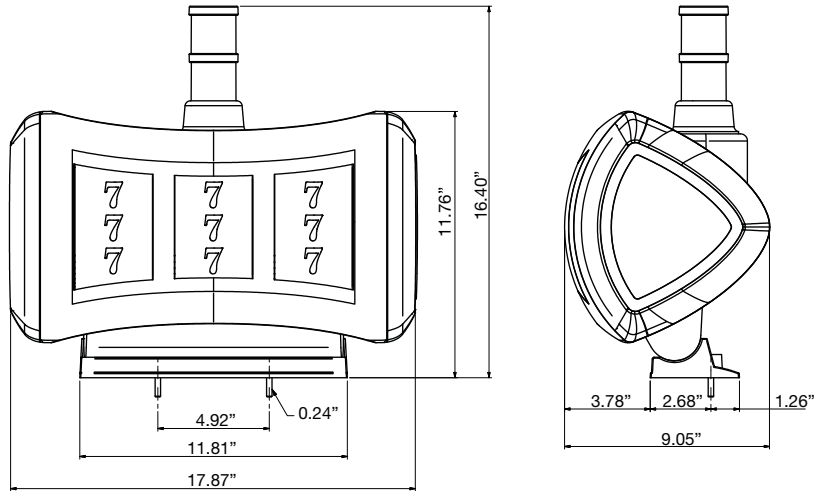


- Equipped with three Starpoint reels with 12 symbols/ stops that are 150mm in diameter and 90mm wide (a four reel version is in development)
- Illumination provided by multi-color Nichia LEDs
- Unique triangle shaped side illumination design provides attraction without distracting from the multi-reel action at the front of the topper
- Optional custom logo can be integrated on the center cap on the sides
- Bezel available in Chrome or Black Chrome
- Equipped with Xtopper which provides a customized RS232 (USB in future) control-board designed by Suzo-Happ
- Xtopper is a powerful tool which allows a game designer to make any interactive game concept
- Xtopper is supplied with development kit that works with Windows and Linux
- Ideal for OEM's to economically upgrade existing machines already installed in the casino to create a total new game concept
- Two on-board power supplies provide power to control both reels along with the illumination
- Durable flame retardant UL94 V0 ABS plastic housing
- Adjustable mounting base included
- Towerlight optional
- Size: 17.87" W x 11.77" H x 9.05" D

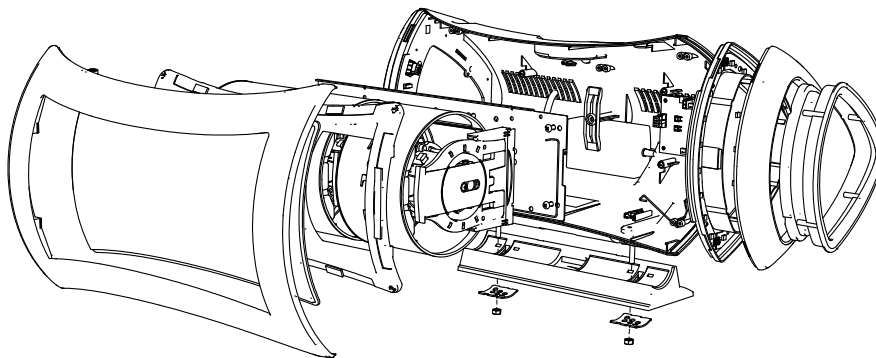


Part Number	Description
104-1XXX	Reel Topper

TOPPER DIMENSIONS



EXPLODED VIEW



ROUND VIDEO TOPPER

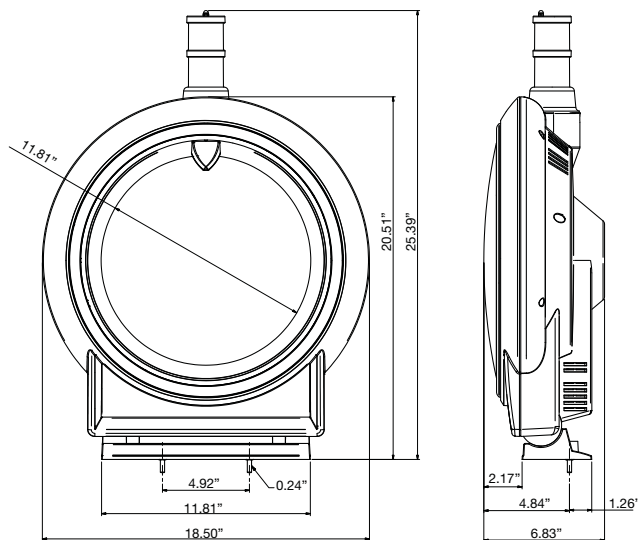


- Offers the game designer flexibility to incorporate new and varied concepts
- Any games based on a disc/wheel type such as Roulette, Lottery Wheel, Clock Type game are economical and easy to develop
- Elegantly designed in Samsung 19" LCD E4 panel with 178° wide viewing angle
- Provides the appearance of the top monitor being round
- Bottom section has two windows where game features can be displayed or they can be blanked out
- Monitor adjustments are easily accessible
- Two different illumination effects available
 - Multi-Color LEDs behind a translucent bezel
 - White LEDs behind a black chromed bezel
- Equipped with Xtopper which provides a customized RS232 (USB in future) control-board designed by Suzo-Happ
- Xtopper is a powerful tool which allows a game designer to make any interactive game concept
- Ideal for OEMs to economically upgrade existing machines already installed in the casino to create a total new game concept
- Durable and flame retardant UL94 VO ABS plastic housing
- Two on-board power supplies provide power to control both LCD panel along with the illumination
- Adjustable mounting base included
- CE approved
- Size: 18.50" W x 20.51" H x 6.81" D

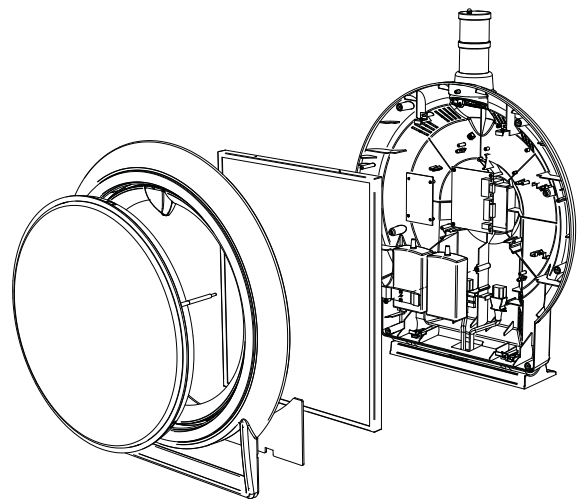


Part Number	Description
104-2XXX	Round Video Topper

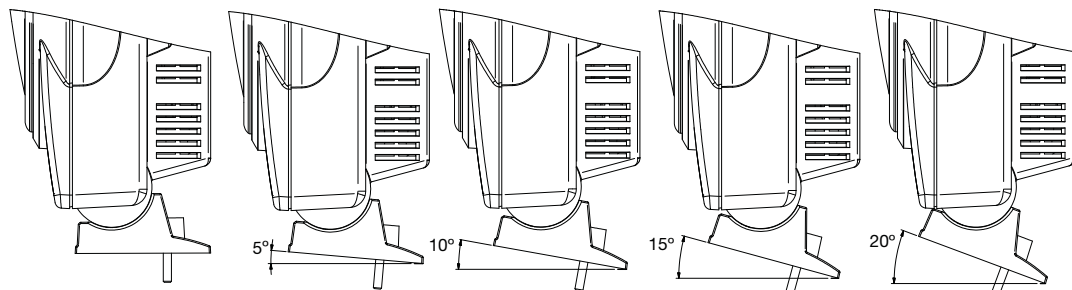
TOPPER DIMENSIONS



EXPLODED VIEW



ADJUSTABLE MOUNTING BASE

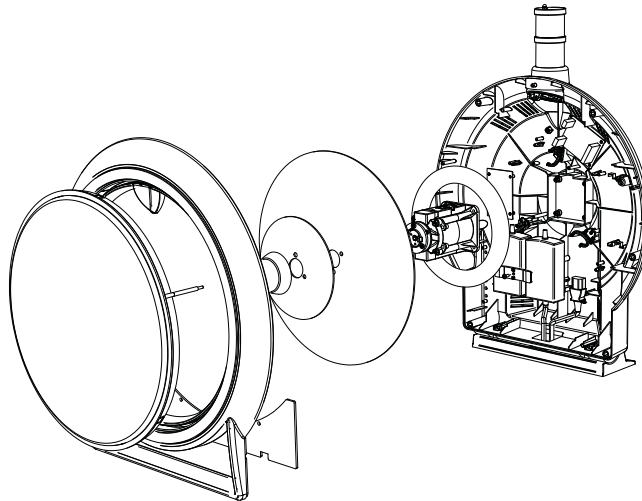


- Leading technology from Suzo-Happ and Starpoint are combined within this unique product
- Easy and economical to develop any game based on a disc/wheel such as Roulette, Lottery Wheel, Clock Type game
- Integrated disc-mechanism with 2 motors creates a new dimension
- Front and back disc mounted in sequence or a disc and arm can be independently controlled and run at different speeds and directions
- Equipped with Xtopper which provides a customized RS232 (USB in future) control-board designed by Suzo-Happ
- Xtopper is a powerful tool which allows a game designer to make any interactive game concept using the special disc and lighting effects
- XTopper is supplied with a development kit that works with Windows and Linux
- Offers the game designer flexibility to incorporate new and varied concepts
- Bottom section has two windows where game features can be displayed or they can be blanked out
- Two different illumination effects available
 - Multi-Color LEDs behind a translucent bezel
 - White LEDs behind a black chromed bezel
- Ideal for OEM's to economically upgrade existing machines already installed in the casino to create a total new game concept
- Two on-board power supplies provide power to control both disc units along with the illumination
- Adjustable mounting base included
- Durable and flame retardant UL94 V0 ABS plastic housing
- Artwork panels are not included
- Size: 18.50" W x 20.51" H x 6.81" D

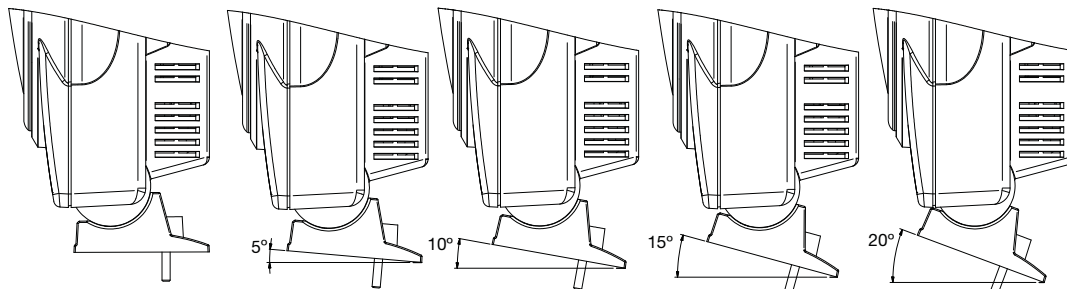


Part Number	Description
104-22XXX	Round Topper

EXPLODED VIEW



ADJUSTABLE MOUNTING BASE



RGB POLYGON TOPPER

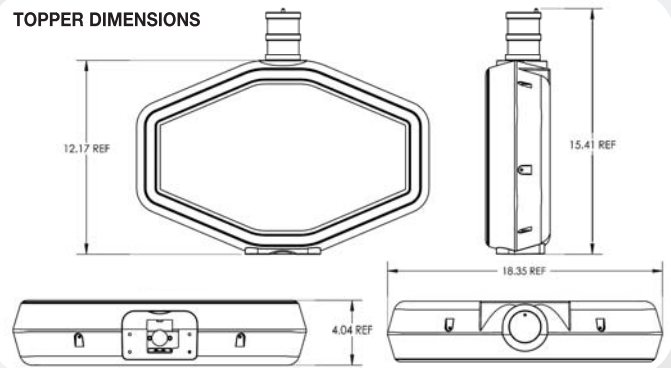


- Designed for use on IGT machines
- USB Version
 - Requires to be plugged into IGT host for complete game control of unique colors and flashing patterns sent from USB host
- Completely backlit by 4 SHARP Super bright white LEDs
- Includes tower light with color foils
- On board PCB allows stand alone operation or synchronization of up to eight topper boxes (synchronization cables required)
- Synchronize toppers to create unique patterns, for example a snake pattern that runs from one topper to the next
- Seven pre-programmed flashing patterns
- Ultra bright RGB Led's guarantee unequalled light output for a spectacular multi-colored lightshow
- Opaque bezel contains 48 bright Nichia multi-color LEDs
- Different attract modes including full on, rotating left to right and right to left, flashing and more
- Requires both 12VDC and +24VDC power
- Optional mounting bases available (Flat, Round, Slant and Arc)
- Body is constructed of black UL-94 V0 flame resistant plastic
- Artwork not included or available
- Topper base sold separately



Pictured with Mounting Base
(Sold Separately)

TOPPER DIMENSIONS



Part Number	Description
91440000	RGB Polygon Topper – USB for use on IGT Games
95-2852-00	RGB Polygon Topper – Non-USB for use on IGT Games

RGB PILL TOPPER

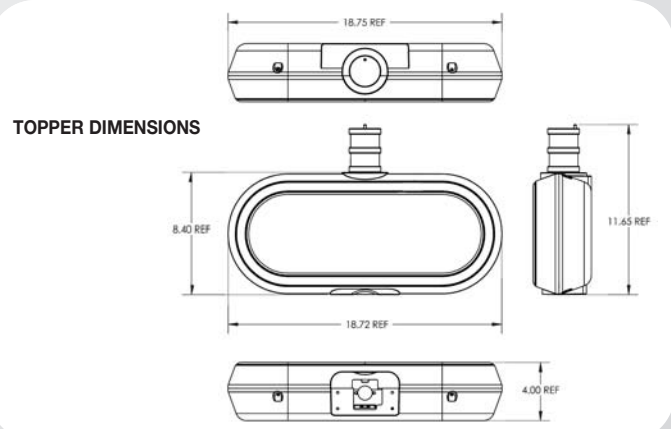


- Designed for use on IGT machines
- USB Version
 - Requires to be plugged into IGT host for complete game control of unique colors and flashing patterns sent from USB host
- Completely backlit by 3 SHARP Super bright white LEDs
- Includes tower light with color foils
- On board PCB allows stand alone operation or synchronization of up to eight topper boxes (synchronization cables required)
- Synchronize toppers to create unique patterns, for example a snake pattern that runs from one topper to the next
- Seven pre-programmed flashing patterns
- Ultra bright RGB LEDs guarantee unequalled light output for a spectacular multi-colored lightshow
- Opaque bezel contains 44 bright Nichia multi-color LEDs
- Different attract modes including full on, rotating left to right and right to left, flashing and more
- Requires both 12VDC and +24VDC power
- Optional mounting bases available (Flat, Round, Slant and Arc)
- Body is constructed of black UL-94 V0 flame resistant plastic
- Artwork not included or available
- Topper base sold separately



Pictured with Mounting Base
(Sold Separately)

TOPPER DIMENSIONS

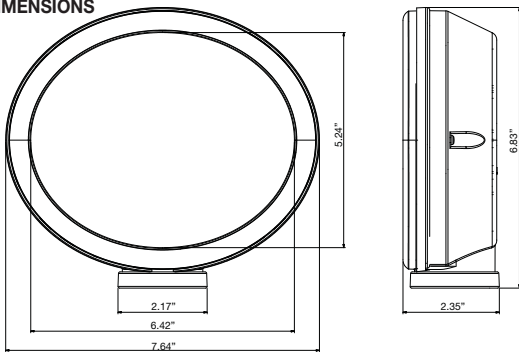


Part Number	Description
91440100	RGB Pill Topper – USB for use on IGT Games
95-2850-00	RGB Pill Topper – Non-USB for use on IGT Games

- Designed to be mounted on top of any standard round classic tower light with the included special top mounting bracket
- Great for advertising special machine features such as Multi-Denomination, Ticket-In Ticket-Out, Hot New Game, Server Based Gaming, etc.
- Translucent bezel with 20 ultra bright Nichia multi-color RGB LEDs provide light output for a elegant multi-colored lightshow
- Pre-Programmed with 8 unique flashing patterns and 7 different color combinations
- Backlit by 9 white high power Nichia LEDs
- Operates on 12vdc power
- Optional harness 11-2801-00 makes it easy to install on existing games by simply tapping into 12vdc and ground
- Artwork panel and tower light are not included
- Durable and flame retardant UL94 VO ABS plastic housing
- Small in size: 7.64" W x 6.83" H x 2.34" D



TOPPER DIMENSIONS



Part Number	Description
104-08000	Tower Light Topper



- Draw attention to your new game with these eye catching printed plexis
- A great way to draw attention to a bank of new machines or highlight the denomination
- Designed to fit the Tower Light Topper (part number 104-08000)
- Tower Light Topper (sold separately) mounts on top of any standard classic tower light (sold separately)

Part Number	Description
95-3656-00	Hot New Game Plexi for Tower Light Topper
95-3657-00	1 Cent Denomination Plexi for Tower Light Topper
95-3658-00	5 Cents Denomination Plexi for Tower Light Topper
95-3659-00	25 Cents Denomination Plexi for Tower Light Topper
95-3660-00	\$1 Denomination Plexi for Tower Light Topper

TOWER LIGHT TOPPER BASE / CAP FOR WMS TOWER LIGHT

- New replacement black top cap that replaces the existing top cap of a WMS Gaming tower light
- Has the necessary mounting provisions to mount the Tower Light Topper (Part Number 104-08000)



Part Number	Description
PR020-670-03	Tower Light Topper Base/ Cap for WMS

LED XENON TOPPER



- The Xenon Topper has a low profile to accommodate locations where ceiling height is a problem
- On board PCB allows stand alone operation or up to 8 toppers to be synchronized to work in a collective pattern
- Toppers can be synchronized to create unique patterns, for example a snake pattern that runs from one topper to the next
- Up to 8 toppers can be synchronized using cables
- Made of durable flame retardant UL94 VO ABS plastics with chrome bezel
- Ultra bright Led's guarantee unequalled light output for a spectacular lightshow
- Back lighted by 11Watt SL Lamp
- Chrome bezel contains 32 bright LEDs
- Seven pre-programmed flashing patterns
- Different attract modes including twinkling, waves, fades and rollercoaster effects
- Whole unit operates on 12VDC power
- Optional mounting base for flat top machines (part number 104-0025)
- Blank plexi panel available (part number 96-0915-00)
- Tower light optional
- Artwork not included or available



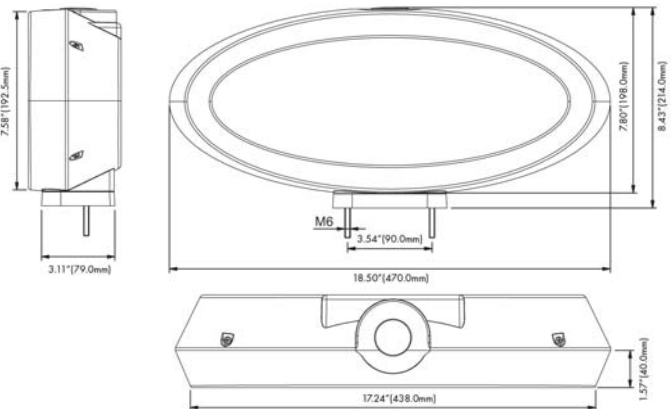
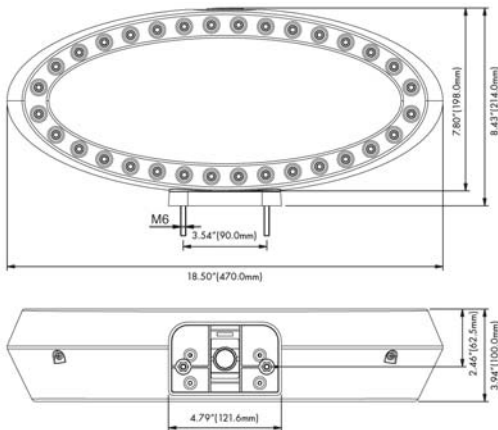
Part Number	Description
104-07890	LED Xenon Low Profile Topper
104-0025	Mounting Base for Xenon Topper for Flat Top Machines
95-2846-00	Mounting Bracket for Xenon Topper for Round Top Machines
80-0414-10	Power Supply for Xenon Topper
96-0915-00	Optional Clear Plexi for Xenon Topper
9902-11	Replacement 12V 11 Watt Fluorescent

LOW PROFILE

SYNCHRONIZE UP TO 8 UNITS



TOPPER DIMENSIONS



- Made of durable plastics with bright chrome or gold (additional charge) bezel
- Back lighted by 11Watt SL Lamp
- Panels surrounded by 32 bright white LEDs
- Artwork panels not included
- Different attract modes including twinkling, full on, rotating left to right and right to left
- Whole unit operates on 12VDC power
- Optional flat or radius mounting brackets with two mounting studs available to accommodate different cabinet configurations
- Body is constructed of black flame retardant UL94 V0 ABS plastic, color customization available
- Optional towerlight
- Artwork not included or available
- Topper base sold separately
- Optional black plexi panel (Part Number 95-2740-00)
- Optional Gold or Black chrome bezel available

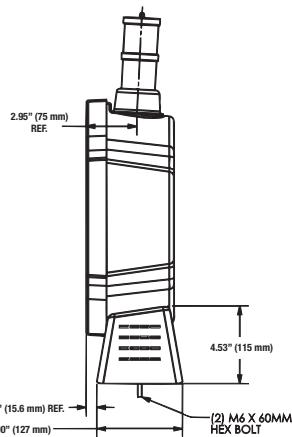
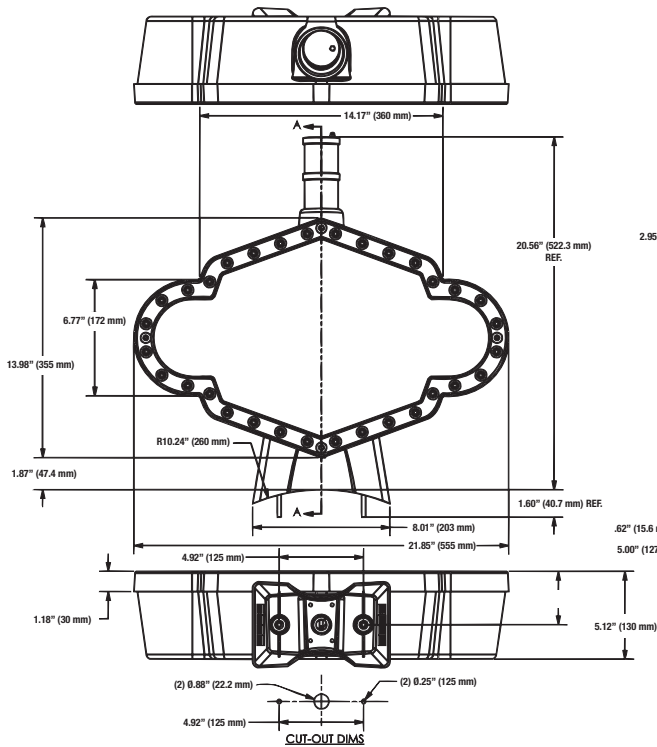
All Parts for Topper Boxes Sold Separately



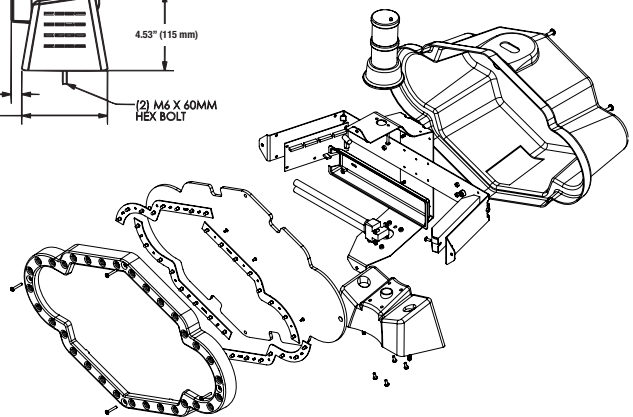
Pictured with Mounting Base
(Sold Separately)

Part Number	Description
104-03890	Ringo Topper, Chrome

TOPPER DIMENSIONS



EXPLODED VIEW



“ELLIPSE” MODEL TOPPER BOX



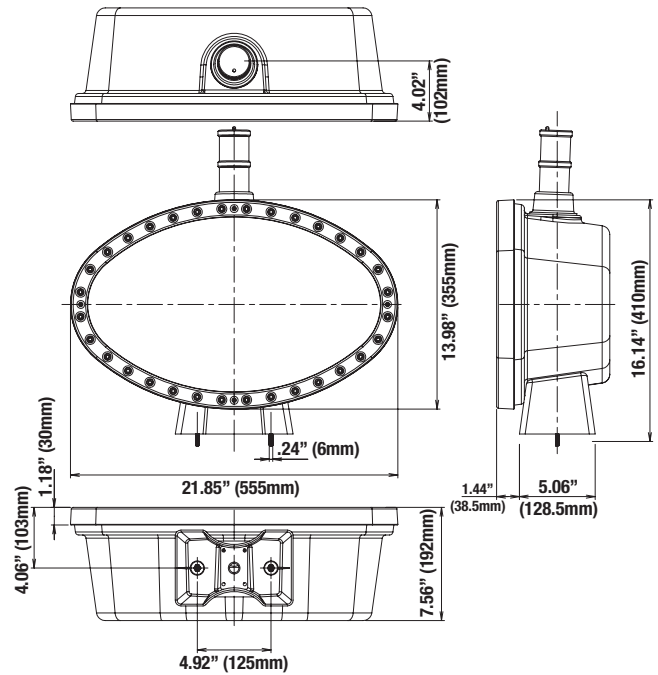
Pictured with Mounting Base
(Sold Separately)



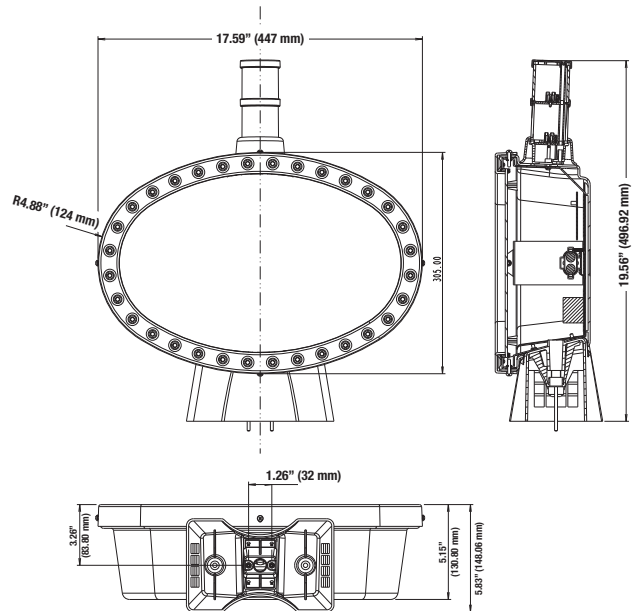
- Made of durable plastics with bright chrome bezel
- Back lighted by 11Watt SL Lamp
- Panels surrounded by 32 bright white LEDs
- Artwork panels not included
- Different attract modes including twinkling, full on, rotating left to right and right to left
- Whole unit operates on 12VDC power
- Optional flat or radius mounting brackets with two mounting studs available to accommodate different cabinet configurations
- Body is constructed of black flame retardant UL94 V0 ABS plastic, color customization available
- Optional tower light
- Artwork not included or available
- Topper base sold separately
- Optional black plexi panel (Part Number 95-2738-00)
- Optional Gold or Black chrome bezel available

All Parts for Topper Boxes Sold Separately

ELLIPSE TOPPER DIMENSIONS



MINI ELLIPSE TOPPER DIMENSIONS



Part Number	Description
104-05890	Ellipse Topper, Chrome
104-06890	Mini Ellipse Topper, Chrome

The World's First Topper with a 15" LCD Screen

- Features a 15" LCD monitor and media controller board
- Display your own MPEG video and/or JPEG pictures
- Graphic plexi insert included gives the LCD an added layer of protection
- Durable flame retardant UL94 V0 ABS plastic construction with bright chrome bezel
- Bezel surrounded by 32 bright white LEDs
- Different attract modes including twinkling, full on, rotating left to right and right to left
- Entire unit operates on one 12VDC power supply included (80-0414-10)
- Flat, angled or radius base sold separately and required for mounting to your cabinet configuration
- Body is constructed of black styrene, color customization available
- Optional tower light sold separately
- Optional gold or black chrome bezel available

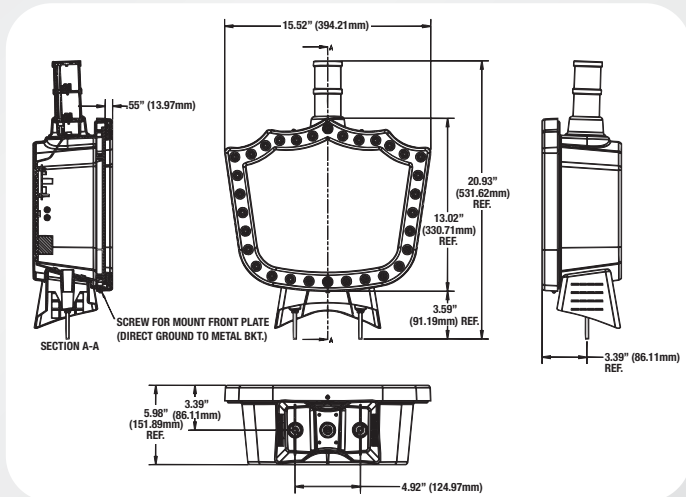
All Parts for Topper Boxes Sold Separately

Part Number	Description
104-058191	Ellipse LCD Topper, Chrome (Media Controller Board & 1GB Compact Flash Card Included)
104-05890-15K	Ellipse LCD Topper, Chrome (Media Controller Board & Compact Flash Card NOT Included)



Pictured with Mounting Base (Sold Separately)

- Made of durable plastics with bright chrome or gold (additional charge) bezel
- Back lighted by 11Watt SL Lamp
- Panels surrounded by 32 bright white LEDs
- Artwork panels not included or available
- Different attract modes including twinkling, full on, rotating left to right and right to left
- Whole unit operates on 12VDC power
- Optional flat or radius mounting brackets with two mounting studs available to accommodate different cabinet configurations
- Body is constructed of black flame retardant UL94 V0 ABS plastic, color customization available
- Topper base sold separately
- Optional black plexi panel (Part Number 95-2739-00)
- Optional Gold or Black chrome bezel available



Pictured with Mounting Base (Sold Separately)

Part Number	Description
104-04891	Shield Topper, Chrome

All Parts for Topper Boxes Sold Separately

SYNCHRONIZED RGB TOPPER BOX



- Up to 8 toppers can be synchronized using cables
- Toppers can be synchronized to create unique patterns, for example a snake pattern that runs from one topper to the next
- Seven pre-programmed flashing patterns
- Made of durable plastics with opaque bezel
- Ultra bright LEDs guarantee unequalled light output for a spectacular multi-colored lightshow
- Back lighted by 11Watt SL Lamp
- Opaque bezel contains 32 bright Nichia multi-color LEDs
- Different attract modes including twinkling, full on, rotating left to right and right to left, flashing and more
- Whole unit operates on 12VDC power
- Optional flat or radius mounting brackets with two mounting studs available to accommodate different cabinet configurations
- Body is constructed of black flame retardant UL94 V0 ABS plastic, color customization available
- Tower light optional
- Artwork not included or available
- Topper base sold separately



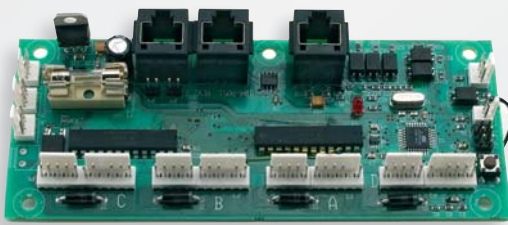
Pictured with Mounting Base
(Sold Separately)

EXAMPLES OF PROGRAMMED FLASHING PATTERNS



Part Number	Description
104-06000	Synchronized RGB Topper Box

TOPPER BOX SYNCHRONIZER



- Allows the synchronization of up to 8 topper boxes to work in a collective pattern
- Greatly increases the effect of the toppers when placed on a bank of machines
- Nine pre-programmed flashing patterns
- Easy to use software allows custom patterns
- Wave, fade, twinkle and rollercoaster are a few of the patterns available
- Works on all older generation topper boxes from Suzo-Happ
- Just replace the existing control board in each topper
- A simple RJ45 cable connects each top box with the next one
- Also works with Light Strips (10 & 20 LEDs)

Part Number	Description
104-0051	Topper Box Synchronizer

REPLACEMENT COMPACT FLUORESCENT LAMP



Part Number	Description
9902-11	Replacement Compact Fluorescent Lamp

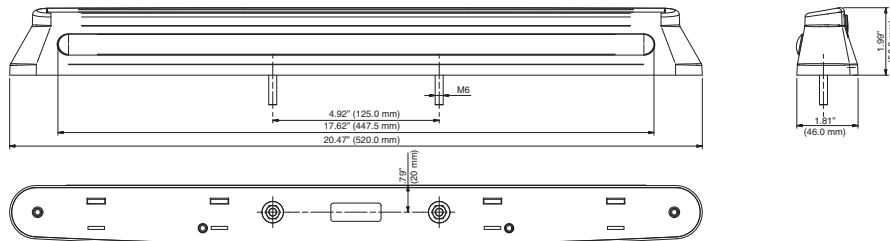
UPRIGHT TOPPER



- Highlight your machine with a sophisticated look
- Multi-colored LEDs illuminate your engraved or screened sign from below
- Artwork and sign (not included) can be engraved or screened on transparent materials (10 mm thick) such as acrylic plastic
- The sign can be cut into any desired shape
- To enhance the illumination effect it is recommended that the outside edges be white.



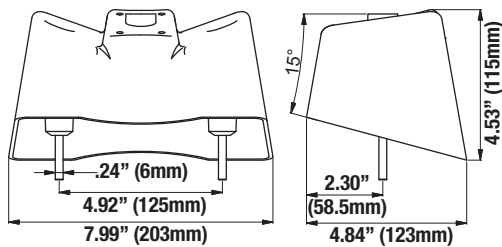
Part Number	Description
104-01000	Upright Topper



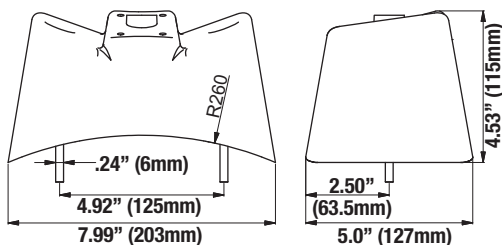
TOPPER BOX BASES



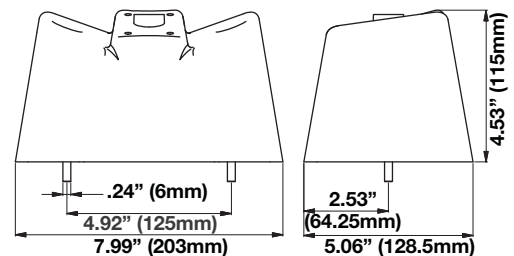
104-0010-1 (SLANTING)



104-0015-1 (CURVED)



104-0020-1 (FLAT)



Part Number	Description
104-0010-1	Topper Base, 15° Slanting
104-0015-1	Topper Base, 250° Curved for Round Top
104-0020-1	Topper Base, Flat
104-0001	Adaptor Bracket for Tower Light Holes (not pictured)

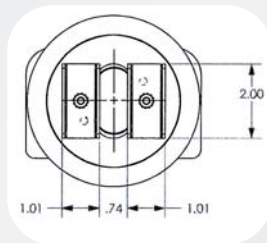
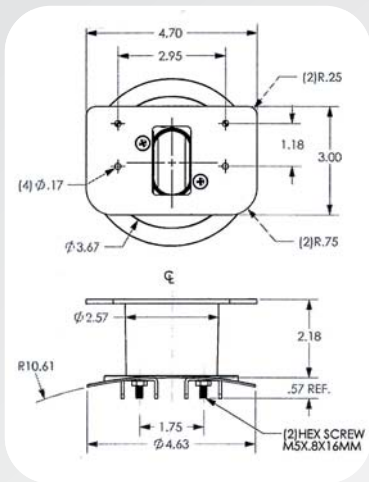
MOUNTING BRACKET FOR XENON TOPPER FOR FLAT TOP MACHINES

- For LED Xenon Topper
- For all flat top machines



Part Number	Description
104-0025	Mounting Bracket for Xenon Topper for Flat Top Machines

MOUNTING BRACKET FOR XENON TOPPER FOR ROUND TOP MACHINES



Part Number	Description
95-2846-00	Mounting Bracket for Xenon Topper for Round Top Machines

HARNESS ADAPTER KIT FOR TOPPER BOXES

- Adapts to IGT Game King Plus and I-Games Plus



Part Number	Description
96-0769-00	Harness Adapter Kit for Topper Boxes

REPLACEMENT COMPACT FLUORESCENT LAMP



Part Number	Description
9902-11	Replacement Compact Fluorescent Lamp

BALLAST FOR SUZO-HAPP TOPPERS

- Also for Atronic E-Motion toppers
- 12 or 24 VDC
- UL Approved



Part Number	Description
22-0139	24V Ballast for Atronic e-motion Toppers
22-0138	12V Ballast for Atronic e-motion Toppers

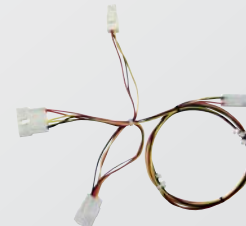
TOWER LIGHT ADAPTER BRACKET



Part Number	Description
104-0001	Tower Light Adapter Bracket

TOWER LIGHT ADAPTER HARNESS

- Adapts to WMS, IGT and Sigma



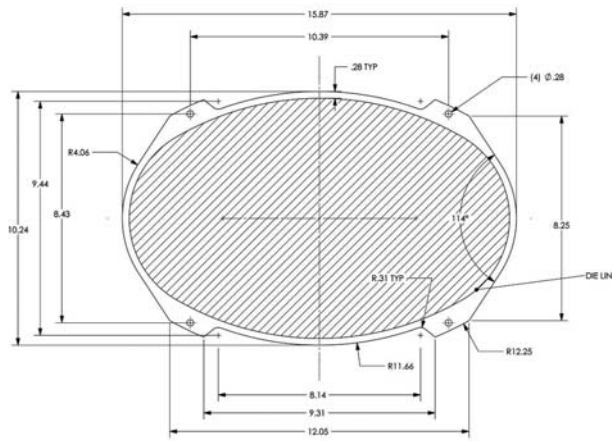
Part Number	Description
96-0565-00	Tower Light Adapter Harness

12V DC PLUG IN POWER SUPPLY

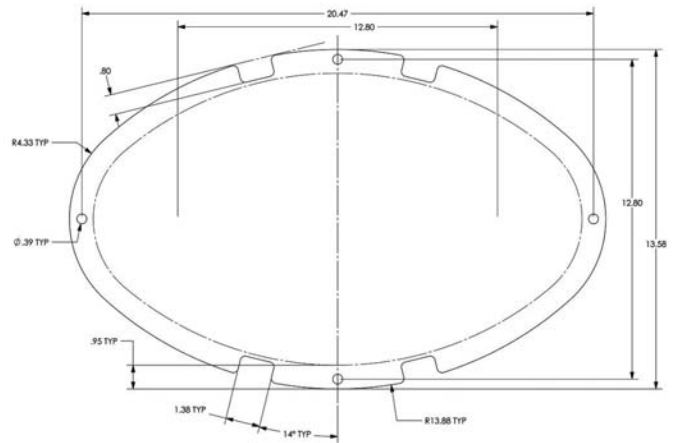


Part Number	Description
80-0414-10	12V DC Plug In Power Supply

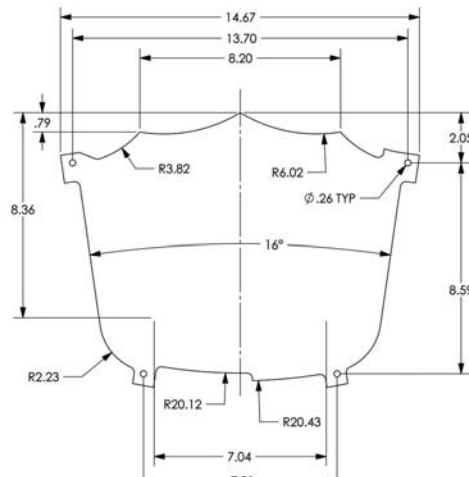
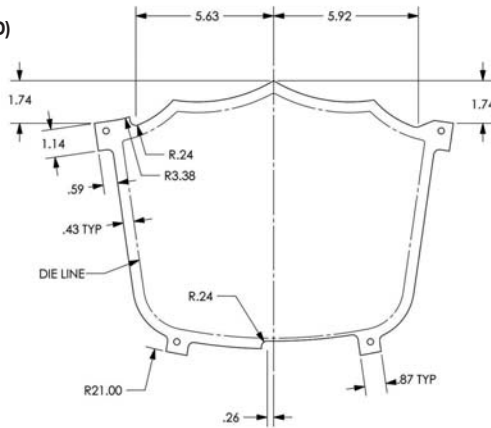
95-2746-00 (MINI ELLIPSE)



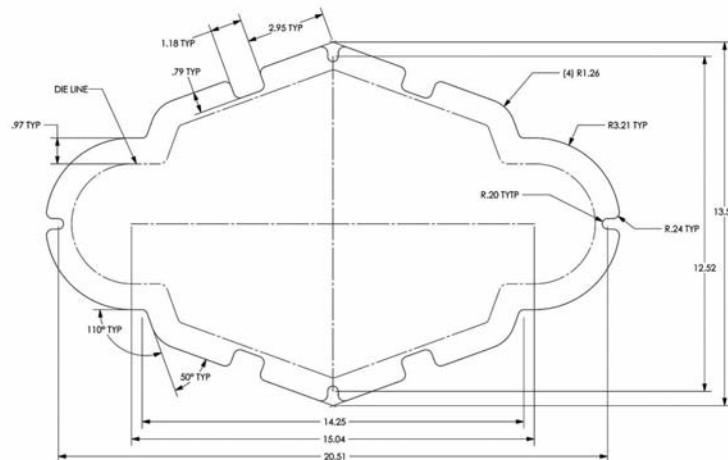
95-2738-00 (ELLIPSE)



95-2739-00 (SHIELD)



95-2740-00 (RINGO)



Part Number	Description
95-2746-00	Mini Ellipse Blank Plexiglass
95-2738-00	Ellipse Blank Plexiglass
95-2739-00	Shield Blank Plexiglass
95-2740-00	Ringo Blank Plexiglass

All Parts for Topper Boxes Sold Separately

Visit suzohapp.com for Free PDF Templates of topper box plexi glass to aid in designing your custom graphics.



SUZO-HAPP GROUP

Mount Prospect Location

1743 Linneman Road | Mount Prospect, IL 60056

TEL: 847-593-6130 | FAX: 847-593-6137

TOLL FREE PHONE: 888-289-4277

TOLL FREE FAX: 800-593-4277

Las Vegas Location

2015 Helm Drive | Las Vegas, NV 89119

TOLL FREE PHONE: 888-289-4277

TOLL FREE FAX: 877-870-2259