

# Installation Procedure

## PROMAX

### STEP 1: CHASSIS REMOVAL

Remove old chassis from monitor frame. Next you will need to make a flat surface to mount the new chassis. You can accomplish this by bending down the existing mounting tabs on the frame surface. Now you are ready to mount your upgrade chassis with the self tapping screws furnished with instructions.

### STEP 2: CHASSIS CONNECTIONS

- a) Connect the "Ground Strap Wire" from the CRT (picture tube) to the ground pin (connector E) on the chassis neckboard. *See Fig. 1 and Fig. 2*
- b) Connect the "High Voltage Anode" wire to the CRT. (**Caution: CRT anode Must be shorted to ground before connecting anode wire to prevent electrical shock!**) *See Fig. 2*
- c) Connect the "Yoke harness" to the chassis. *See Fig. 3A, Fig. 3B, Fig. 4 & Addendum*
- d) Connect chassis "Neckboard" to CRT.
- e) Connect the "Signal Input" harness to the chassis. (**Note: "Signal Input" is the RGB and Sync wires from your game board.**)

### STEP 3: POWER CONNECTIONS

Connect "110 AC" to an isolation transformer. (*Isolation Transformer is Required*)

### STEP 4: Power up & Adjustments

You are now ready to power up your upgrade chassis! Some adjustments may be required, please see list below.

#### Main Chassis Board

Screen	= user adjustable
Focus	= user adjustable
Red Gain	= Factory Set
Green Gain	= Factory Set
Blue Gain	= Factory Set
*Horizontal Width	= user adjustable

\* (*Note: Horizontal size is also adjustable by moving jumper wires from narrow to wide on the chassis board.*)

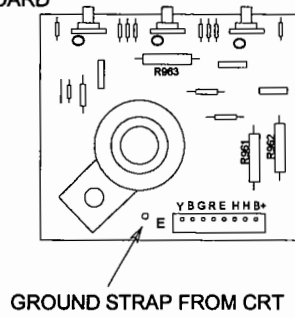
#### Remote Board

Brightness	= user adjustable
Vert. Pos.	= user adjustable
Vert. Size	= user adjustable
Vert. Hold	= user adjustable
Hor. Hold	= user adjustable
Hor. Pos.	= user adjustable

#### Neckboard

Red Bias	= user adjustable
Green Bias	= user adjustable
Blue Bias	= user adjustable

FIG. 1  
NECK BOARD



GROUND STRAP FROM CRT

FIG. 2

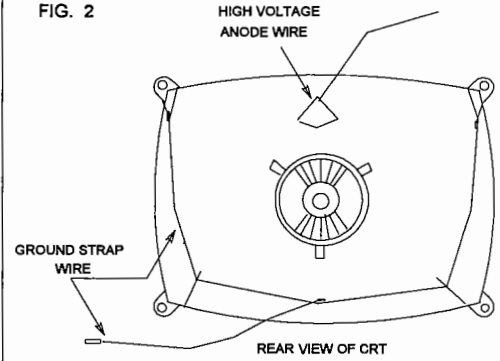
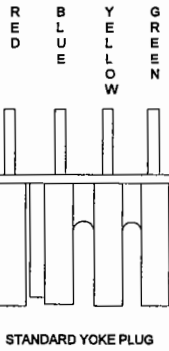
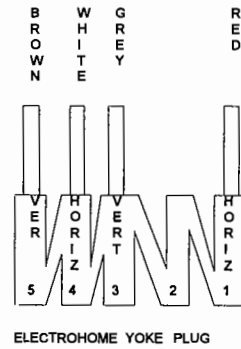


FIG. 3 A



STANDARD YOKE PLUG

FIG. 3 B



ELECTROHOME YOKE PLUG

FIG. 4 UPSIDE DOWN IMAGE

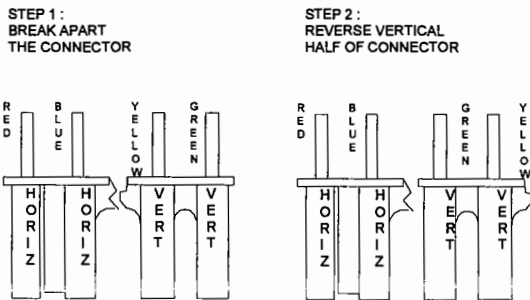
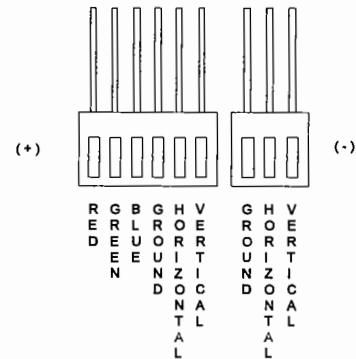


FIG. 5



**HANTAREX YOKE CONNECTOR CONVERSION**

1) Cut the brown, red, yellow, and orange yoke wires from the Hantarex yoke harness.

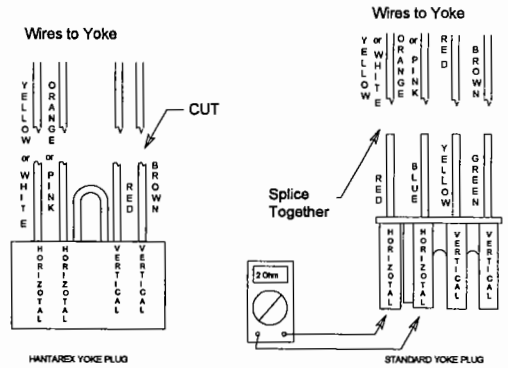
2) Splice together:

Hantarex Yoke Wires	To	Promax Yoke Wires
1) Brown Wire	To	Green Wire
2) Red Wire	To	Yellow Wire
3) Orange (or Pink) Wire	To	Blue Wire
4) Yellow (or White) Wire	To	Red Wire

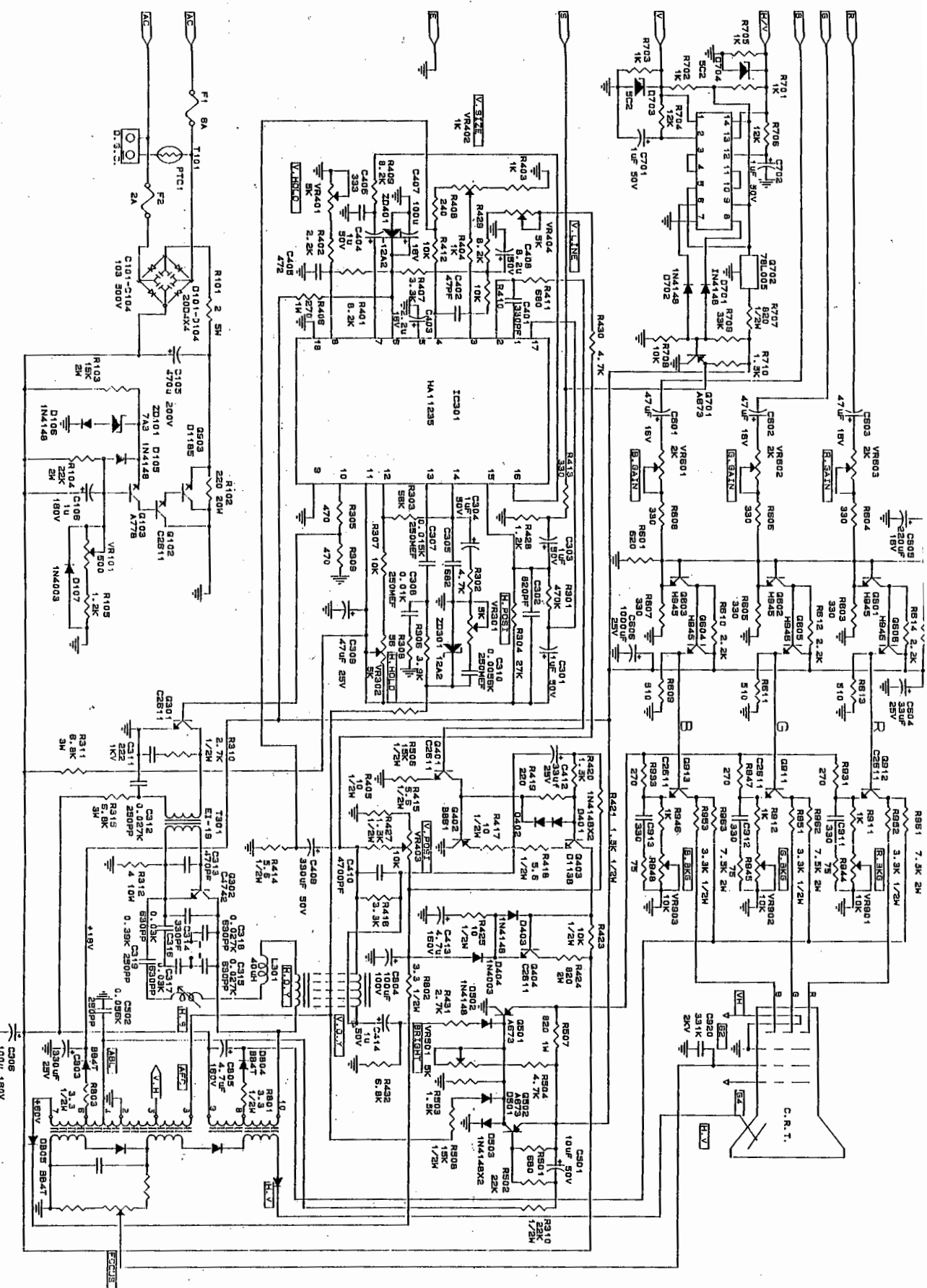
**Note:**

Before connecting yoke plug to chassis measure the yoke impedance. You should have 1.5 ohms on horizontal (red & blue wires) and 9.4 ohms on vertical (green & yellow wires).

**ADDENDUM FIGURE**



MODEL: 1820H / 1820HR



REVISION	DATE	DESCRIPTION	REVISION	DATE	DESCRIPTION

DRAWN BY	DESIGNED BY	SCALE	CHECKED BY	APPROVAL BY	DATE
林煒立	林煒立		林煒立	林煒立	86.11.14

維亞 懷藝電子股份有限公司  
HUI | ELECTRONICS CO., LTD.  
WEI-YA  
D-18