

NOTE: Do **NOT** connect to both USB & PS2 Plugs at the same time

FEATURES:

- The Suzo-Happ USB/PS2 Trackball assemblies are trackballs that will connect to a computer without any external interface or power supply (except 56-7000-24 3" RGB version that requires +12vdc to illuminate RGB ball). This allows the user to replace the existing mouse with a heavy-duty trackball for public access and similar applications. The USB/PS2 trackballs can be added with or without removing the original mouse. The trackballs will connect to any computer that has either a USB or PS2 port. The trackball is available in various colors, including RGB illuminated versions. Power for the Illumination, typically 12 volts, is supplied by a separate source — 80-0414-10 optional power supply or 11-2801-00 H2 vdc Harness Kit (pictured at right).
- The trackball itself is the same shape and size as the standard Suzo-Happ trackballs. The addition of a built-in computer interface has many advantages including:
 - No interface needed to connect a trackball to a computer.
 - Connects directly to either a USB or PS2 port on a computer/PC.
 - Works on Windows 98 or higher, MAC OS 8.5 or higher, and Linux with USB HID support.
 - No external power supply needed, unless using RGB Illuminated Ball option.
 - Automatically detects whether it is connected to a USB or aPS2 port and configures itself accordingly.
 - Comes with a 6-foot cable that will plug into a USB or a PS2 port.
 - Supports up to three buttons. (Three-button functionality will require the use of a driver that supports three buttons. The standard Microsoft driver supports two and the MAC OS supports one.)
 - A wire harness is supplied that will connect our Horizontal, Ultimate, Competition or Illuminated Pushbuttons with .187" or .250" switch terminals. Pushbuttons are not included.

Accessories for the 3" RGB Trackball



INSTRUCTIONS FOR:

- 3" Trackball Part Numbers: 56-7000-24 (RGB Illuminated Ball)
56-0300-XX (Solid Ball Color)
- 2 1/4" Trackball Part Number: 56-5600-XX
- 4 1/2" Trackball Part Number: 55-0314-00

INSTALLATION

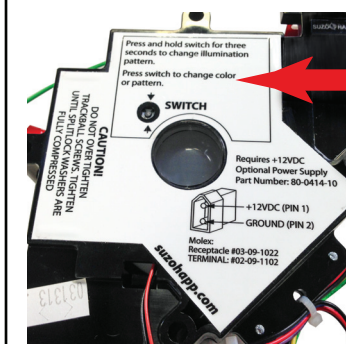
- Connect the buttons to the trackball: (See illustration to the left). Turn the power off on your computer. Connect the button you will use for the Left Mouse Button to the Brown and Black wires of the button wire harness from the trackball. Quick-connect terminals are provided on the harness for easy connection to the buttons. Connect the button you will use for Middle Mouse Button to the White and Black wires. Connect the button you will use for the Right Mouse Button to the Orange and Black wires. On all buttons, the Black wire connects to the COM (bottom) terminal and the Colored wire connects to the Normally Open (N.O.; center) terminal on the button switches. It is okay to leave unconnected the wires for any buttons that are not used.
- Connect the trackball to the computer: Connect either the PS2 cable to a PS2 port on the PC or connect the USB cable to a USB port on the computer.
DO NOT connect both at the same time!
- Turn on the computer.

For PS2 connection: After the computer boots, the cursor on-screen will be controlled by the trackball and the buttons (trackball will function as a mouse). In Windows, it may be necessary to go to Control Panel and click "Add New Hardware" so a driver can be found.

For USB connection: For computers using Windows you may be asked to "Insert the WINXX Disk" so a driver can be found. After doing this, the cursor on-screen will be controlled by the trackball and the buttons (trackball will function as a mouse).

NOTE: The USB cable can be connected while the computer is on.

Additional details for 3" RGB Illuminated Trackball P/N 56-7000-24



To change the illumination color of the RGB LED Trackball:

Press and Hold the switch on the bottom of the trackball for 3 seconds to change the illumination pattern.

Press Switch to change color.

