



# Stackerless bill validator

## features

- Fixed-width bill validation (67mm or 71mm wide).
- Advanced self-calibrating sensor technology scans both sides of the bill simultaneously for fast, valid bill recognition.
- Patented non-contact magnetic sensors help reduce jamming and optimize legitimate currency validation.
- Tool-free service access.
- Switch selectable, serial or pulse interfaces.
- Beltless transport system.
- Four-way bill validation.
- Self-diagnostic LED.

CASHCODE'S STACKERLESS BILL VALIDATOR. IT'S COMPACT. HARD WORKING. LOW MAINTENANCE. AND PERFECT FOR APPLICATIONS WHERE SPEED AND RELIABILITY MEAN EVERYTHING TO YOUR BOTTOM-LINE.

**Non-contact magnetic recognition.** Acceptance is meaningless without validation. That's why CashCode combines optical sensor technology with the only patented non-contact magnetic sensor in the industry. The result is maximized counterfeit detection and 96% or greater validation rates on the first insertion.

**Beltless design reduces maintenance.** Troublesome and costly belts are eliminated with our patented and innovative beltless transport design—improving reliability and greatly reducing long-term maintenance costs.

**Switch selectable interfaces.** CashCode gives you the option to simply select serial or pulse interfaces depending on the type of application you need for your business.

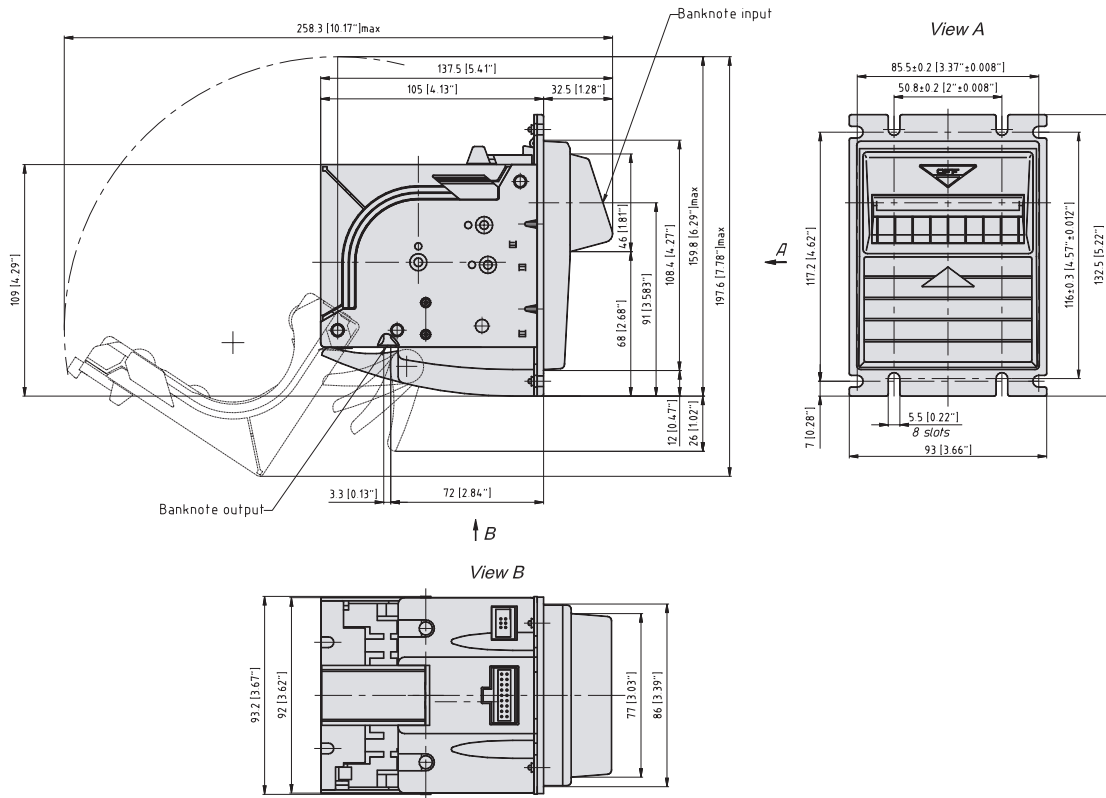
**Auto-calibration.** Every time a bill is inserted, the Stackerless bill validator self-calibrates, eliminating the need for optical adjustments and calibration papers.

**Tool-free service access.** Our one-step direct access design easily pushes open for service access to the bill path, with no tools required.

**Low cost of ownership.** The Stackerless bill validator is built to hold up to your application's most demanding conditions with unmatched reliability. Should the validator encounter a functional or mechanical error, the 12-point self diagnostic LED quickly identifies the problem. Just more examples of how our focus on ease and innovation helps lower your cost of ownership.

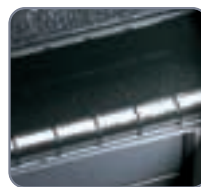


# Stackerless bill validator



## specifications

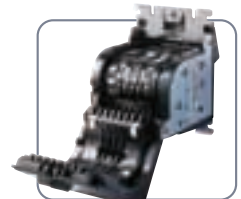
Bill Width Validated	67 or 71mm wide (fixed-width)
Bill Insertion	<i>U.S.:</i> four-way <i>Canadian:</i> one-way
Validation Rate	96% or higher
Escrow	One bill
Sensors	Optical and patented magnetic
Interfaces Supported	Pulse and serial
Program Memory	CPU
Operating Voltage	12V DC
Max. Current Requirements	0.85 A DC
Operating Temperature	0° C to 50° C
Validation M.T.B.F.	750,000 cycles
Complete Transport Cycle	2.0 sec
Dimensions (W x H x D)	102 x 106 x 95mm
Weight	< .81 kg
Approvals	CSA approved



**A grooved bezel path** allows air to pass beneath the bill on insertion. *The result?* Easier insertion and better centering of the inserted bill.



**Advanced sensor technology.** CashCode's optical and magnetic sensors work together to optimize validation rates.



**Tool-free service access.** With just a single push of a button, service access to the bill path is easy and never requires tools.



**A 12-point self-diagnostic LED** identifies the problem if the validator encounters a functional or mechanical error.



**Patented non-contact magnetic sensors** help reduce jamming by detecting magnetic properties without touching the surface of the bill.



**Beltless transport system.** Patented roller-based design lowers maintenance costs by eliminating troublesome and costly belts.



CashCode Company, Inc. 553 Basaltic Rd., Concord, ON Canada L4K 4W8 [www.cashcode.com](http://www.cashcode.com)  
toll-free (800) 584-2633 phone (905) 303-8874 fax (905) 303-8875 e-mail [sales@cashcode.com](mailto:sales@cashcode.com)