

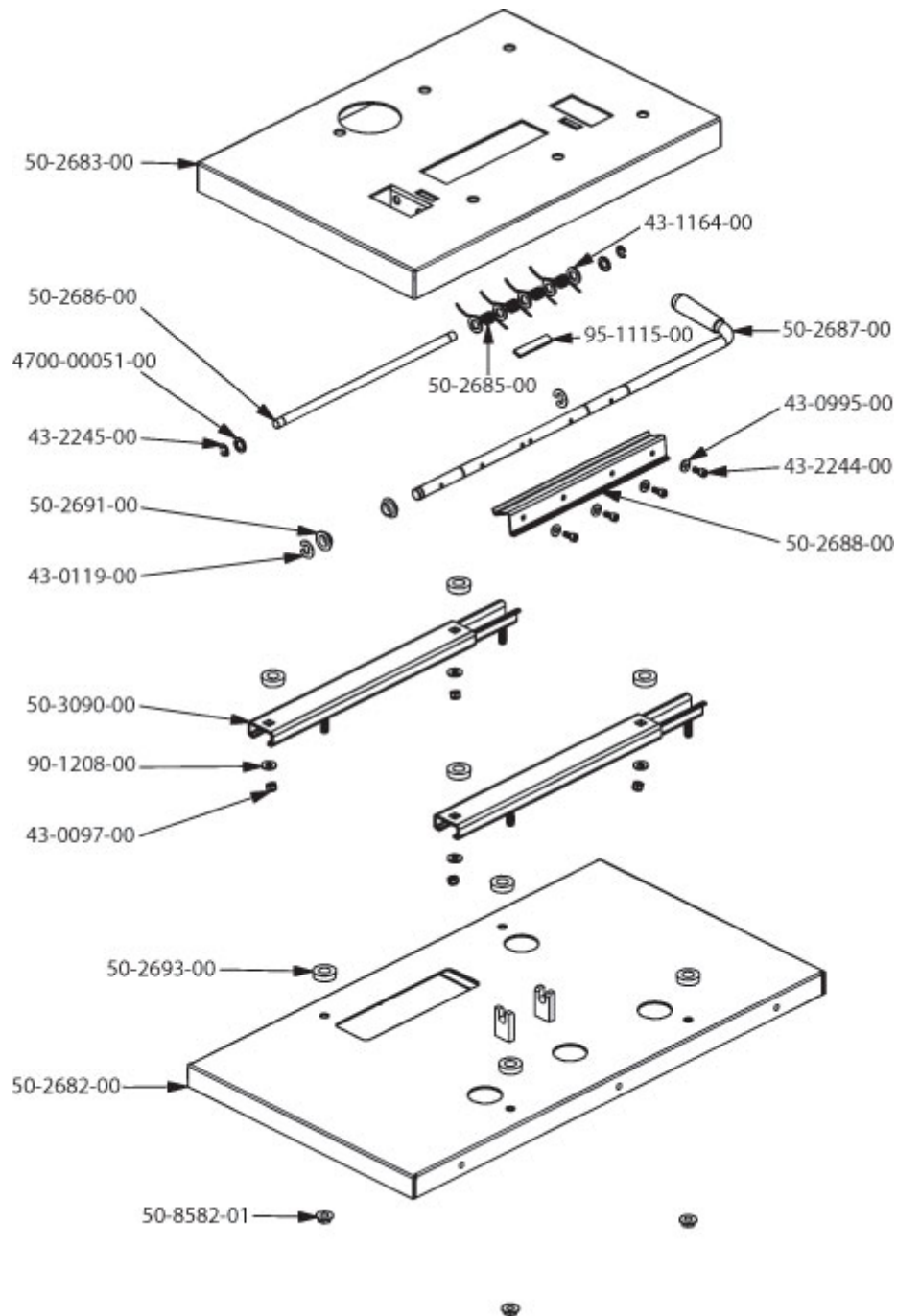


GAMING, AMUSEMENT AND INDUSTRIAL COMPONENTS

Assembly Instructions Spring Seat Slide Assembly

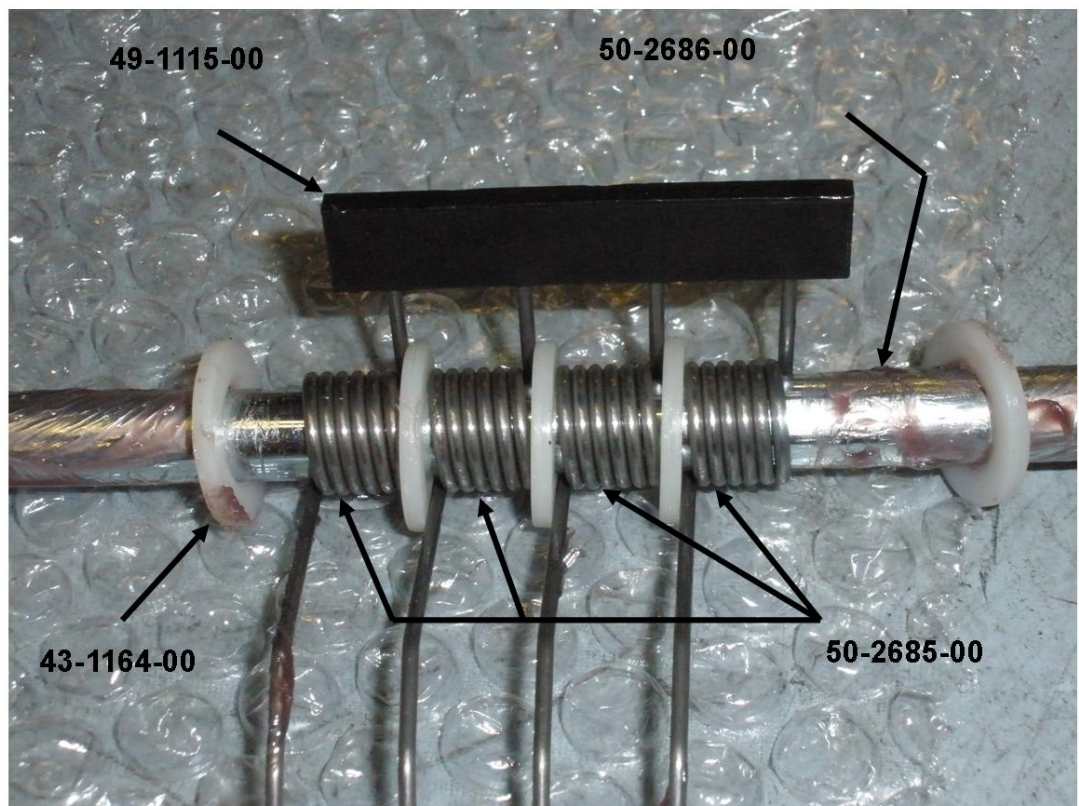
50-0429-00, 50-0429-10, 50-2692-00,
50-2692-05, 50-2692-10, 50-2692-20
50-3137-00, 50-3137-10, 50-4105-00

This document covers how the springs on this seat slide are to be assembled only.

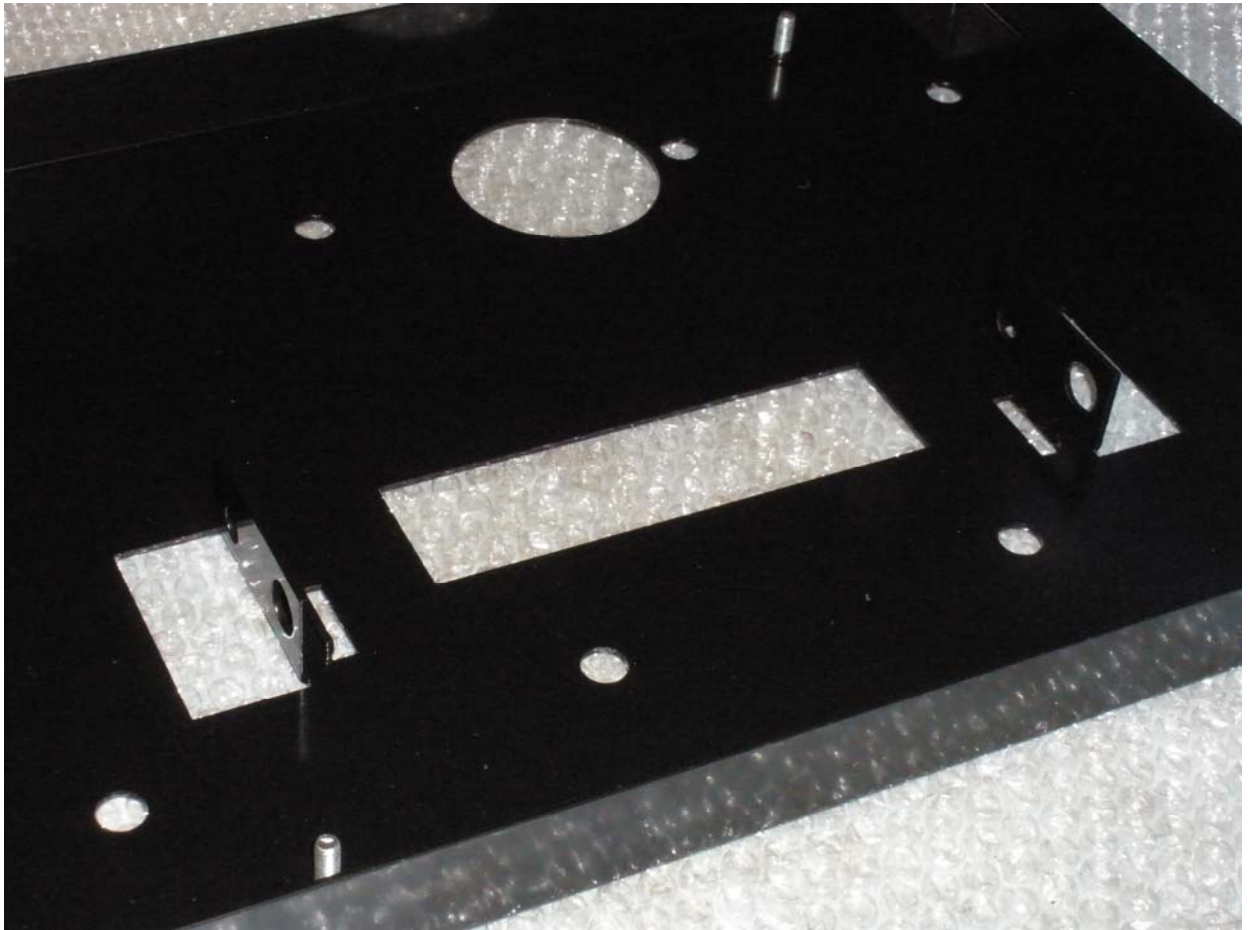


- 1: Apply light coat of grease to shaft spring rider.
Assemble Springs, Spring Clip, and Plastic Spacers onto Shaft Spring Rider as shown.

Shaft Spring Rider part number 50-2686-00	1 used
Plastic Spacer part number 43-1164-00	5 used
Torsion Spring part number 50-2685-00	4 used
Spring Clip part number 95-1115-00	1 used

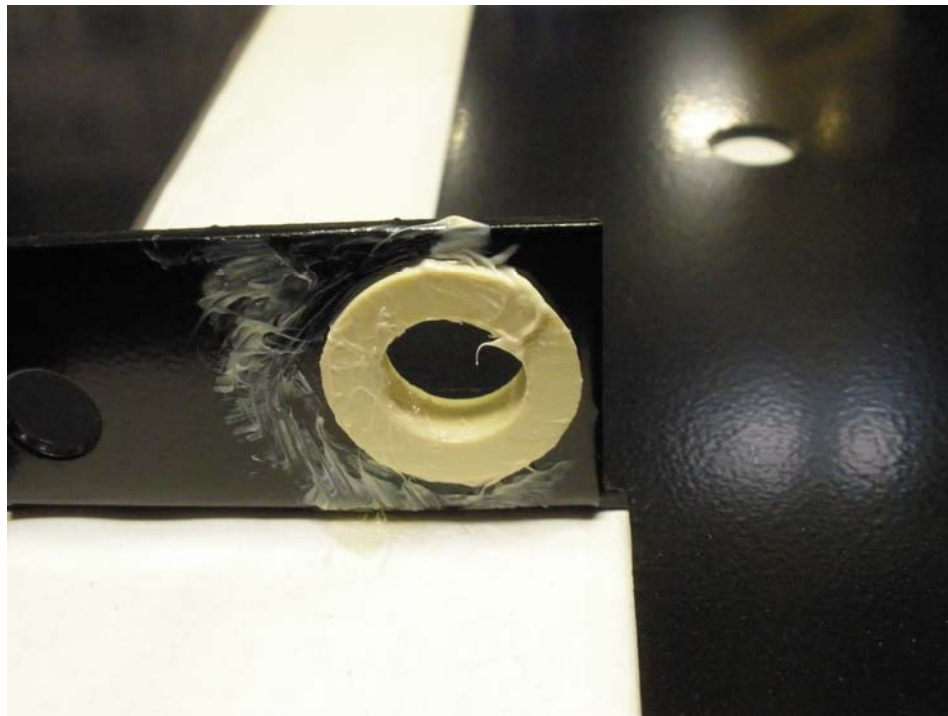


2: Seat Slide Base showing area spring assembly will be installed into.



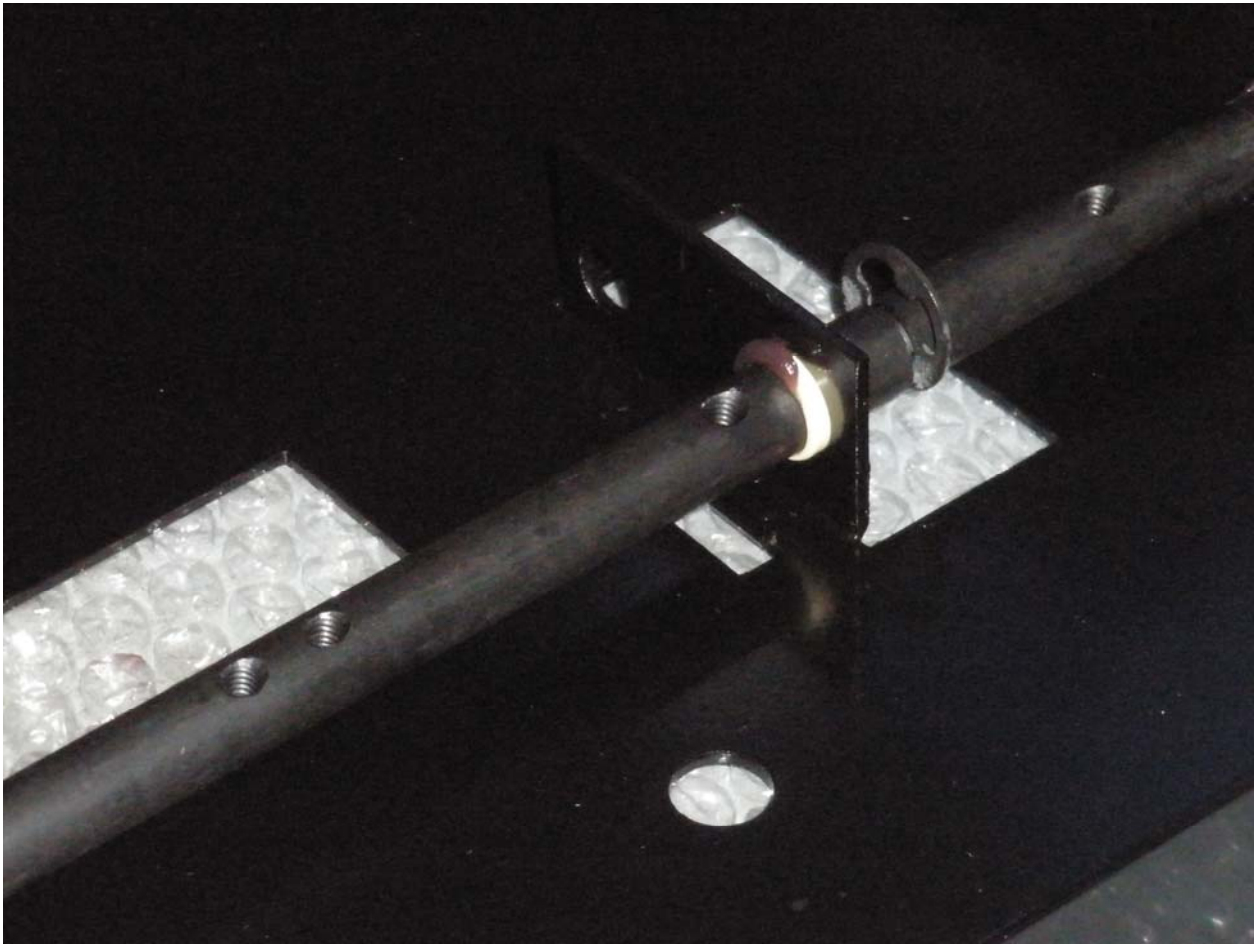
- 3: Install Plastic Bushings into holes where Lever arm will pass through on Seat Slide Base and apply light coat of grease to inside of bushings.
Bushings are to be installed such that the flat surface on both bushings are towards the outer edges of the seat slide base.

Plastic Bushing part number 50-2691-00 2 used



- 4: If Lever Arm has been removed re-install now through bushings installed in step 3 and secure with E-ring in slots at both ends of Lever Arm in slot provided for this purpose..

Lever Arm part number 50-2687-00	1 used
E-Ring, Retaining 1/2" Dia.	2 used

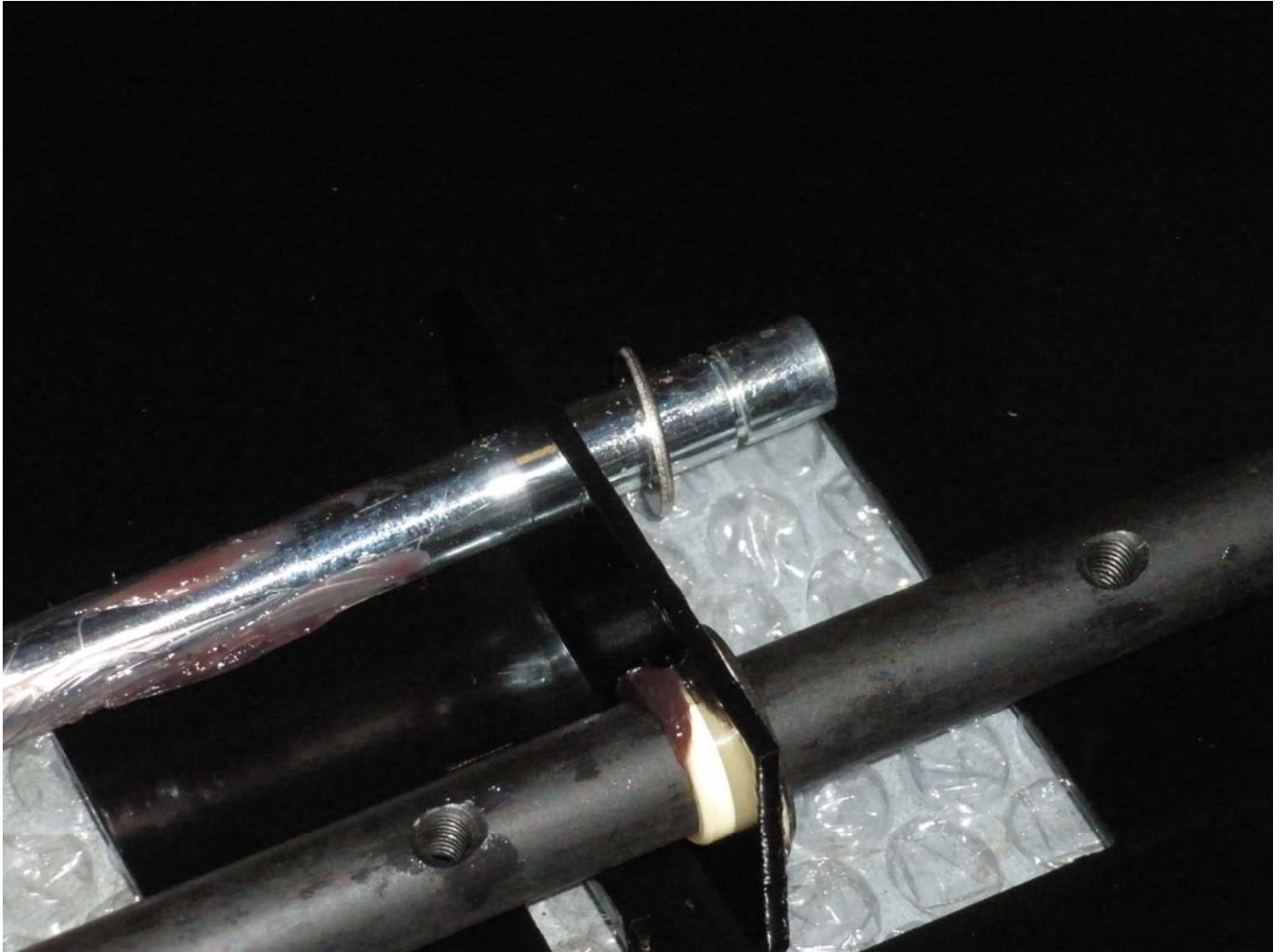


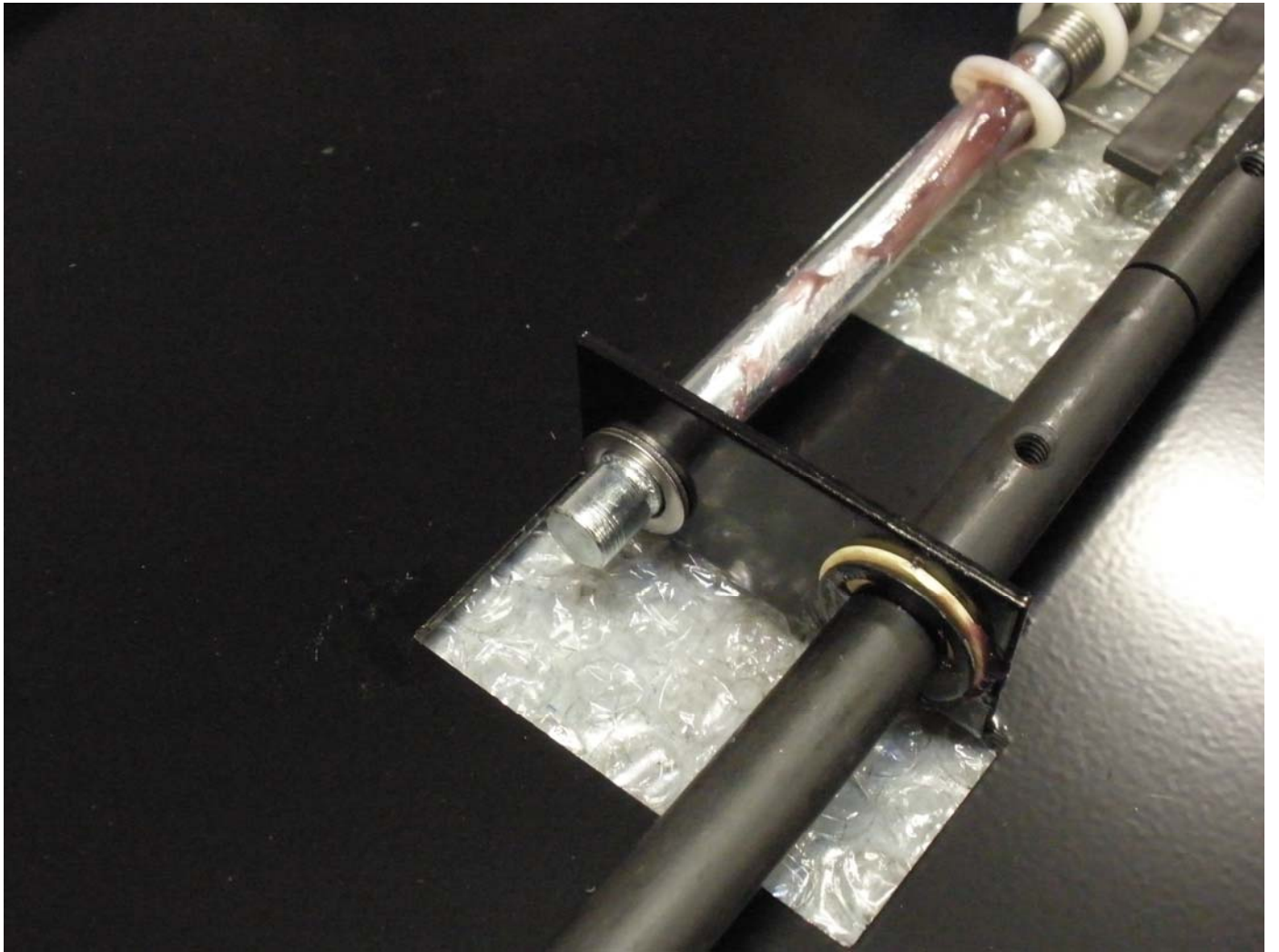
- 4: (Continued)



- 5: Slide Shaft Spring Rider with springs and plastic spacers (illustrated in step 1 above) into hole adjacent to hole where lever arm has just been re-installed in step 4 above. Install into hole closest to back of seat slide base first as shown below. Then slide the other end into the corresponding hole towards the front of the seat slide base. Place Flat Washer over Shaft Spring Rider at both ends as shown in pictures below.

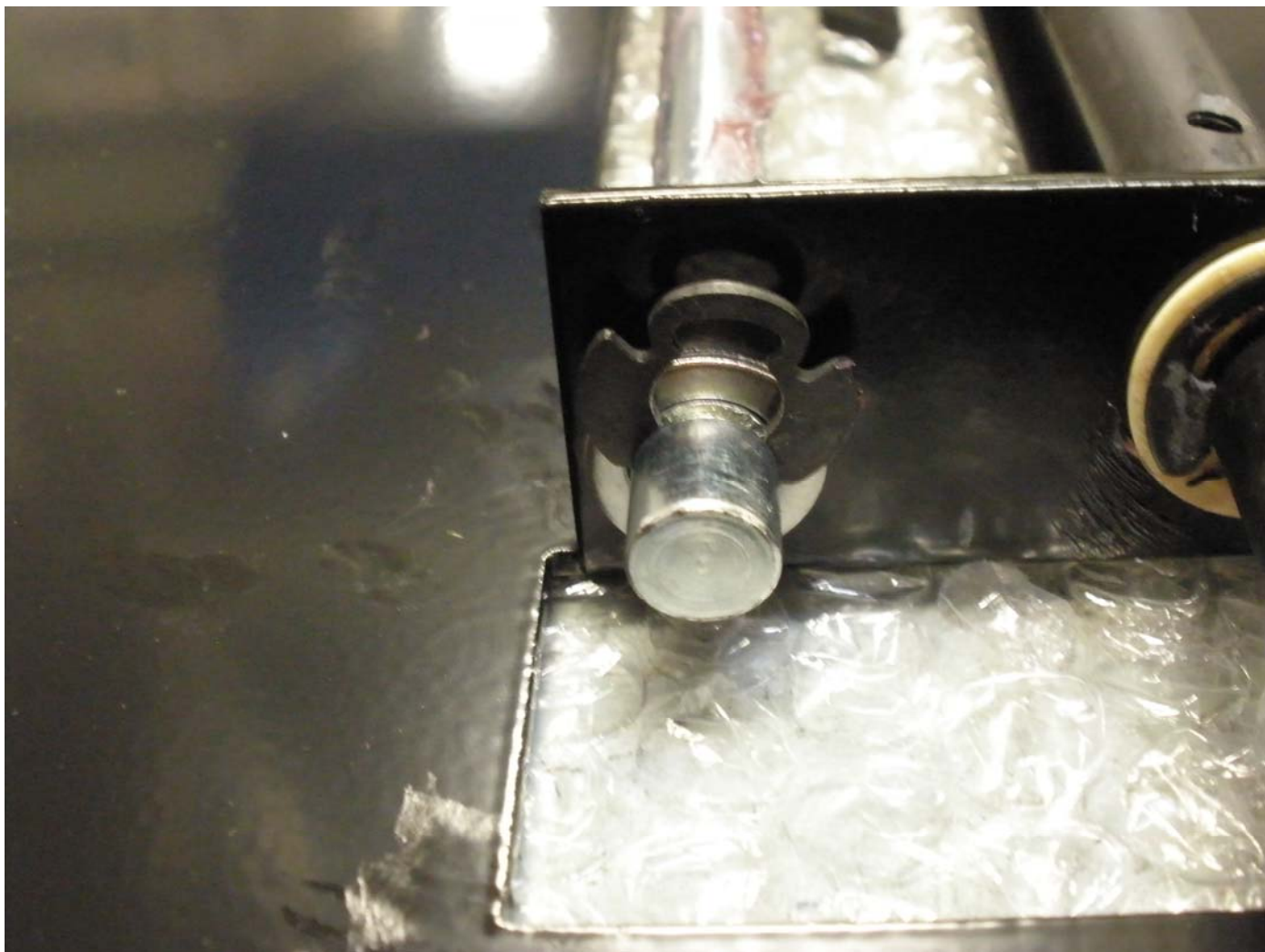
Flat Washer part number 4700-00051-00 2 used



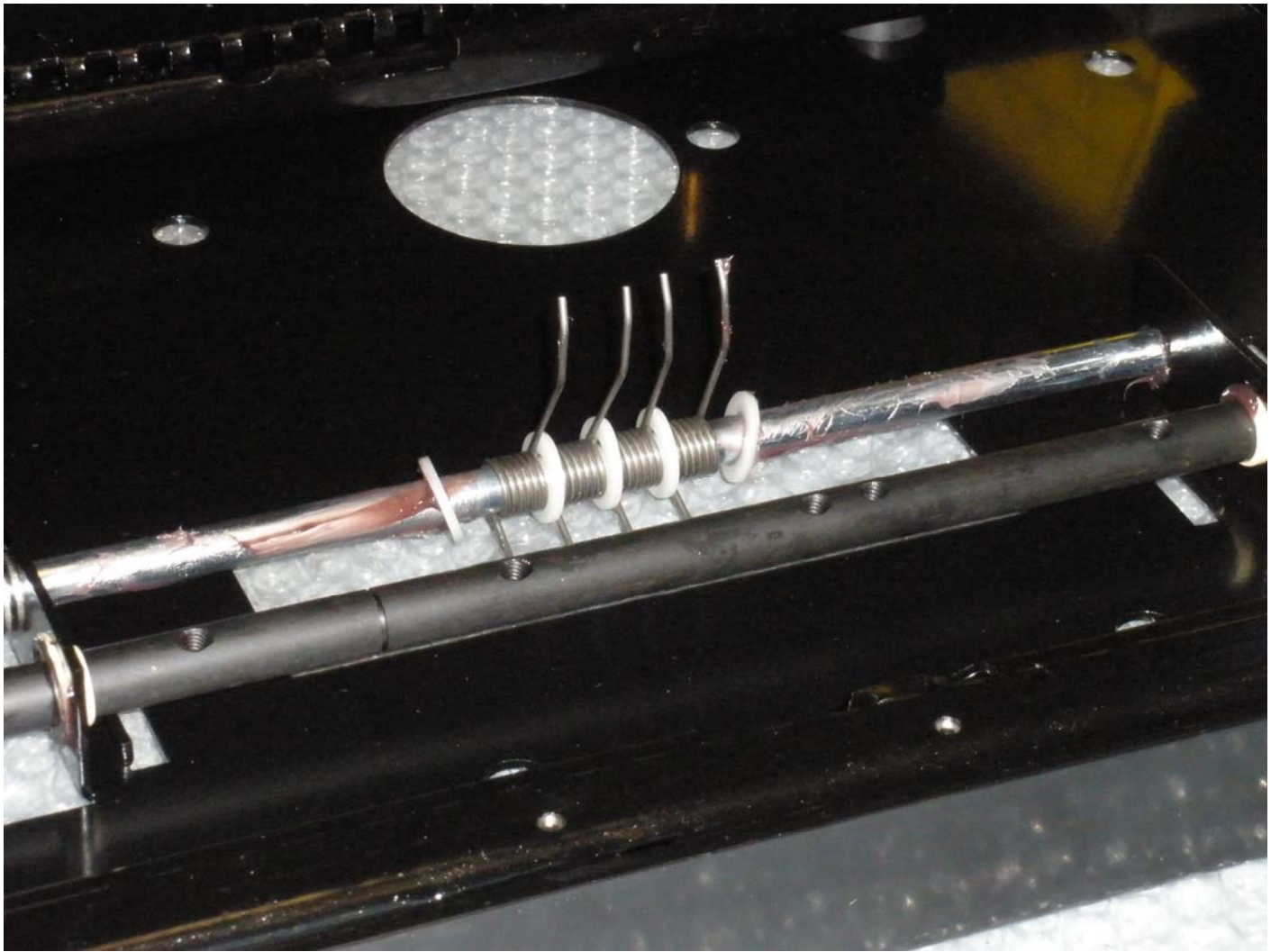


- 6: Secure Shaft Spring Rider with external retaining ring heavy duty at both ends of the shaft spring rider in slots provided for this purpose.
Make certain tips of 4 torsion springs part number 50-2685-00 are facing up from the surface of the seat slide base on the side farthest away from the lever arm.

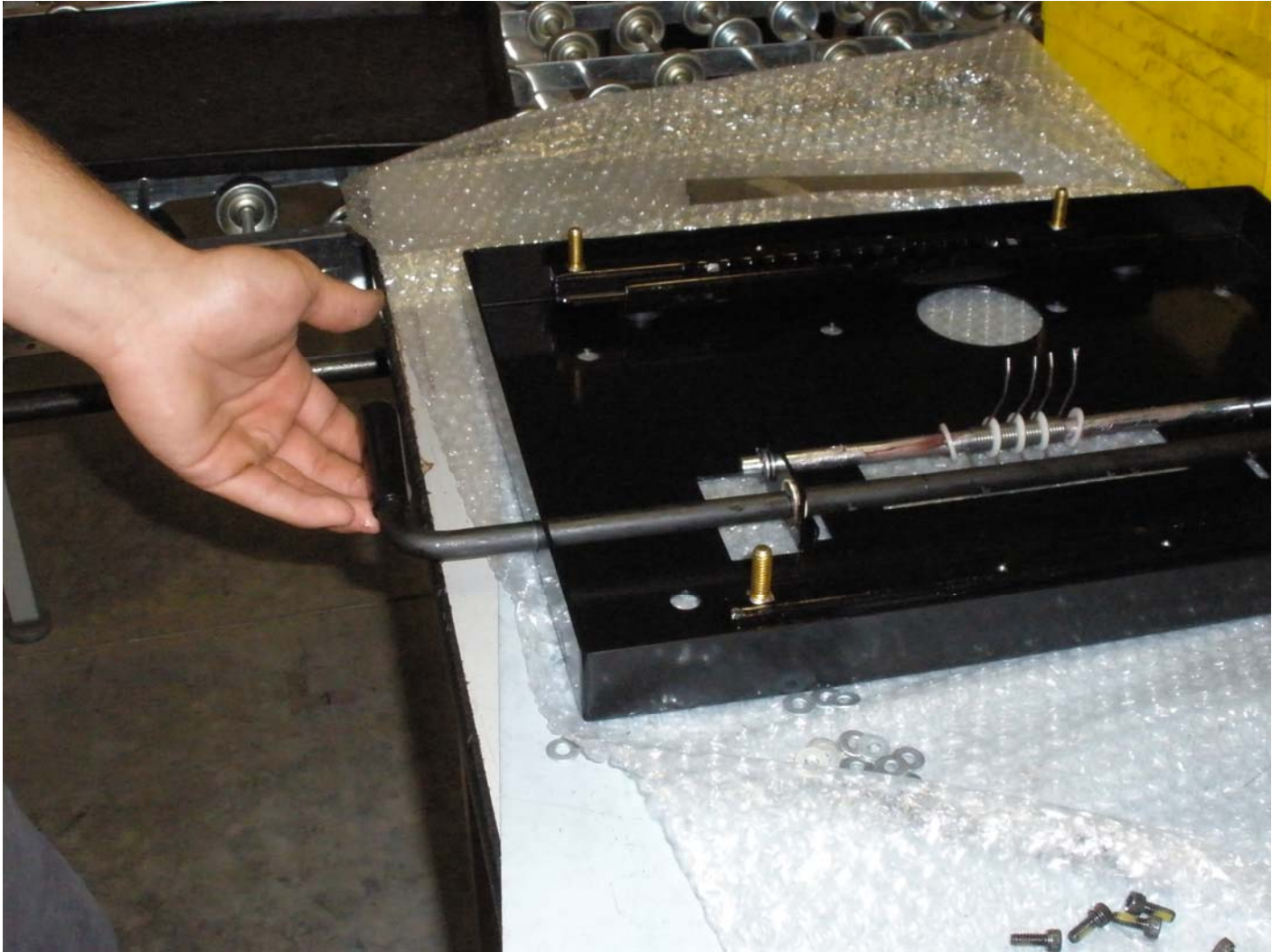
Retaining ring heavy duty part number 43-2445-00 2 used





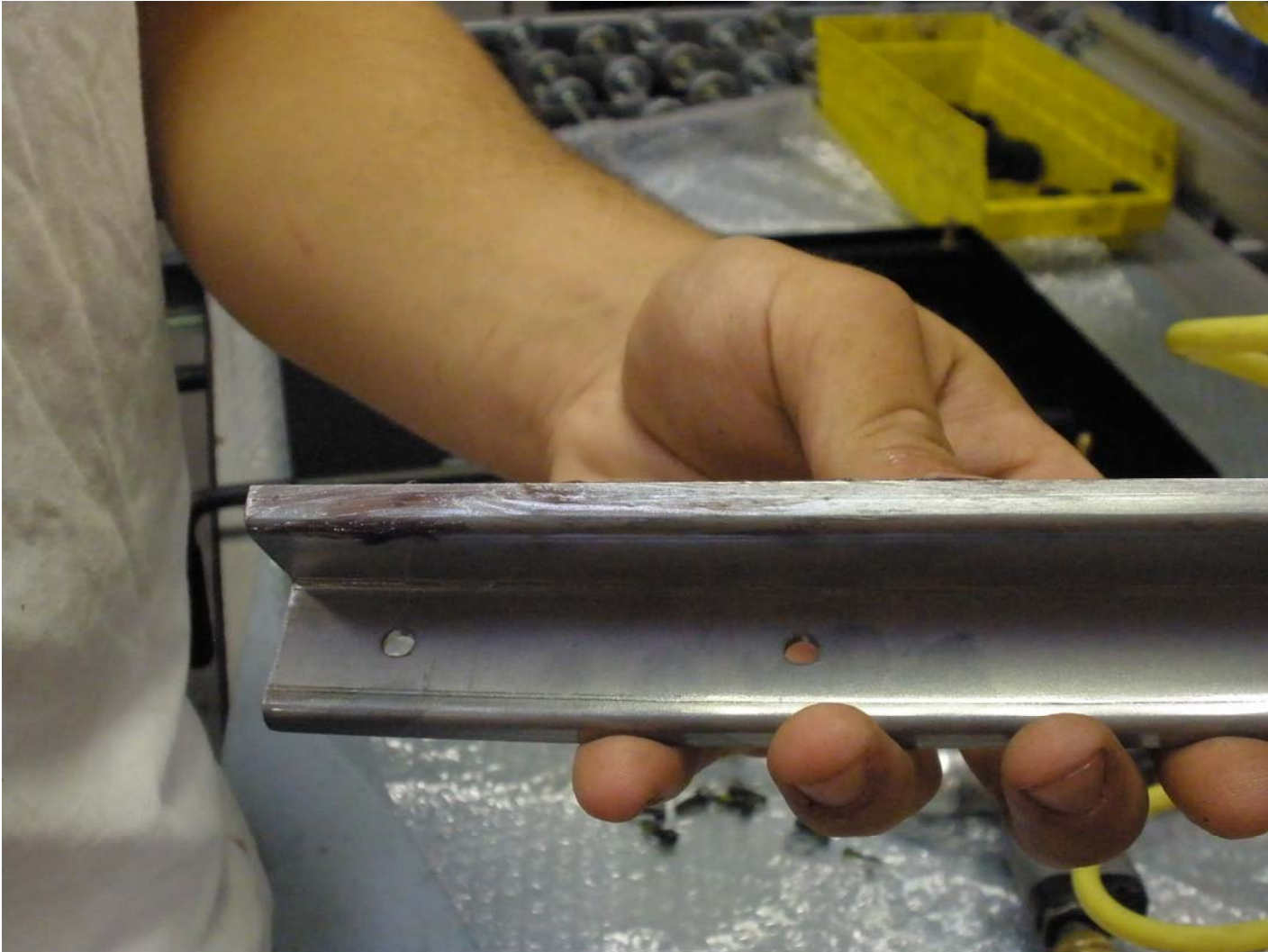


7: The handle on the lever arm must be parallel to the upper edge of the seat slide base to perform the next step.



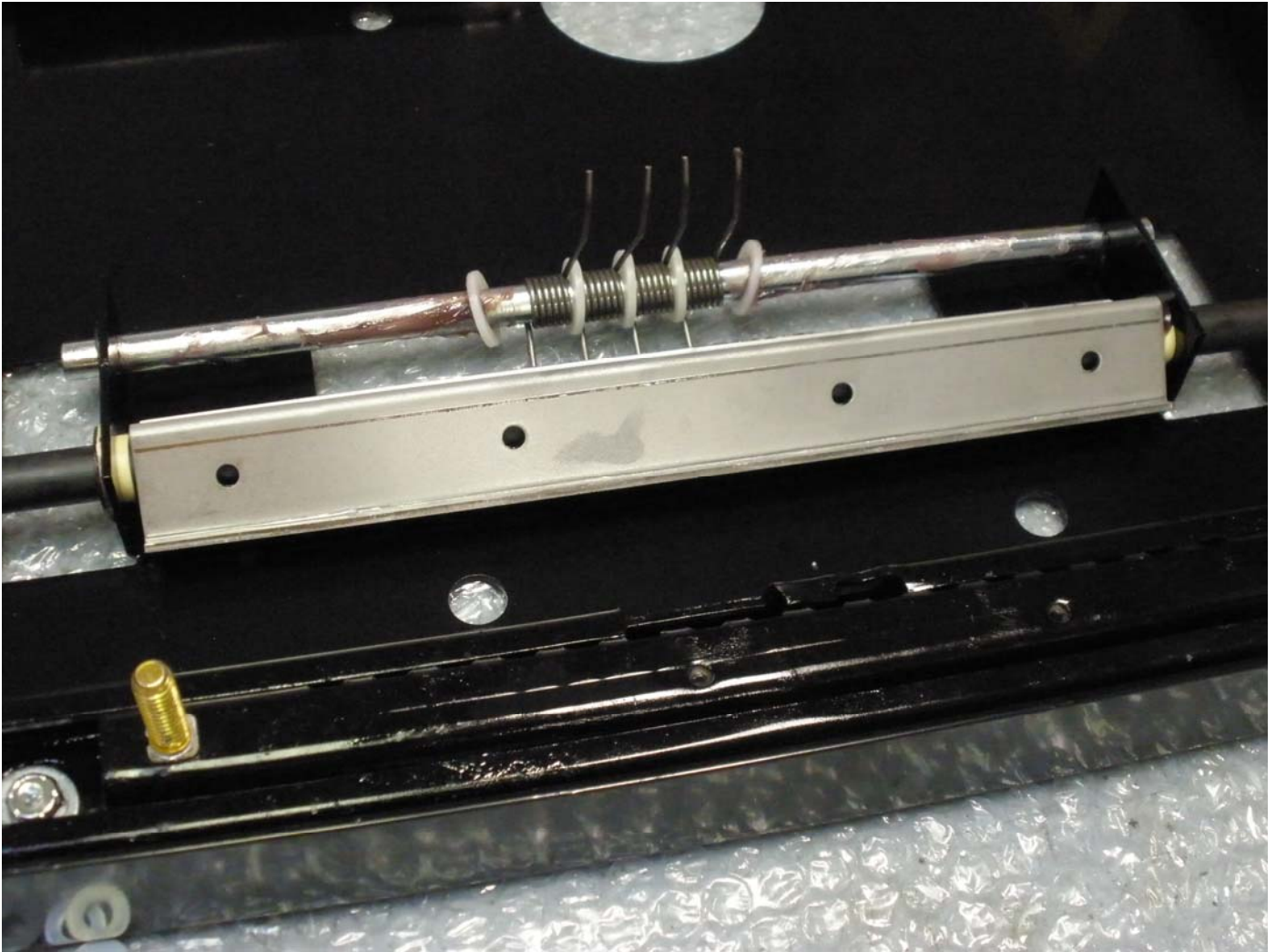
8: Apply a thin coat of grease to the edge of the Spring Tensioner as shown below.





- 9: Attach the Spring tensioner to the lever arm using part numbers 43-0995-00 # 10 SAE Flat Washer 43-2244-00 10-24 X 1/2" socket head cap screw (4 places) as shown below. When installing this piece make certain that the Spring Clip is under the inner surface of the spring tensioner. Tighten these screws securely. See four photos below.

10 – 24 X 1/2" Socket Head Cap Screw	Part Number	43-2244-00	4 used
# 10 SAE Flat Washer	Part Number	43-0995-00	4 used









- 10: When assembled correctly the Springs, Spring Clip, Plastic Spacers, and Shaft Spring Rider Assembly should look as it does below.

