

SUZO-HAPP

NEW GAMING PRODUCTS

ENGINEERED
SOLUTIONS



INNOVATIVE
PRODUCTS



suzohapp.com

ECO Friendly Casino Lighting

from **SUZO**  **HAPP**



Energy efficient lighting for the Gaming Industry improves the lighting of the game legend panel and color dispersion without shadows! 70% lower power consumption than existing fluorescent and incandescent bulbs.



See Pages 19-23 for more product details



TABLE OF CONTENTS

Toppers

Celebration Video Topper	2
RGB Toppers	7
LED Toppers	14

“Green” Products

Lighting	19
Cleaning & Maintenance	24

Air Purification & Filters 26

Illuminated Pushbuttons

Casino Chrome	36
Replacement Kits	40

Innovative Solutions

MIMO Cash Management	42
Flip Card Unit	44
Compact RGB Handle Mechanism	46
Custom Reel Mechanisms	47
Flow Hopper	48

MEI Bill Validators 50

FutureLogic Ticket Printers 54

Gaming Parts & Accessories

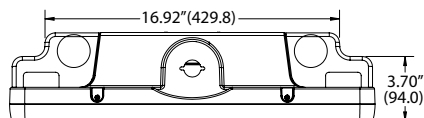
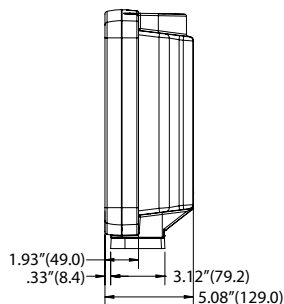
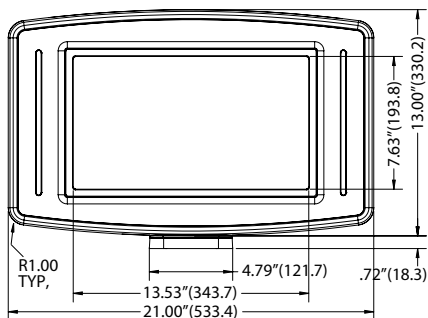
LCD Monitors	61
Power Supplies & Replacement Parts	62
Ballasts & Repair Kits	66
Bill Handling	68
Digital Signage	70

CELEBRATION VIDEO TOPPER

It is time to add some
CELEBRATION & EXCITEMENT
to your casino floor!



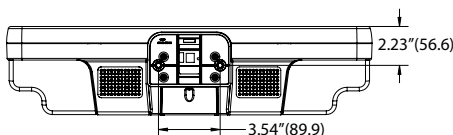
Pictured with Options



DIMENSIONS



95-0124-00



CELEBRATION VIDEO TOPPER

This innovative topper design creates a new level of excitement on your casino floor & stimulates additional game play. Topper interfaces into the SAS* line to detect a hand pay signal from the slot machine and when the selected level of hand pay is achieved the topper triggers a "Celebration Event"

- Celebration Event options include ANY or ALL of the following:
 - Confetti launcher throws out bursts of confetti
 - Loud 8 Watt Stereo audio celebration alarm/sounds thru two 2" x 4" speakers
 - Standard or customizable videos on the 15.6" LCD (1366 x 768 resolution)
 - Flashing multi-color RGB LEDs on both sides of the LCD
 - Event Movement Modules that raises and lowers event attraction modules, such as LED Tubes, Flashers, etc. from within the topper
- 15.6" LCD driven by Network Digital Signage Player
 - 10/100M Ethernet with RJ-45 connector
 - Storage on Compact Flash (CF) card (up to 32GB)
 - NTP, FTP Client, HTTP Client
 - Download Performance over 300KBps with intranet HTTP server (CF Card: Sandisk Extreme IV)
 - Playback Formats of SD Video (1366 x 768): MPEG-1, MPEG-2, MPEG-4, Divx up to 720p
 - Audio Formats of WAV, MP3 (32k - 320k bps)
 - Image Format of JPEG (max resolution 5120x3840)
 - Remote Control
 - Remote Control functions of Network setup for client IP, Server IP and other settings
 - Bundled Software for Windows XP/Vista to load, control and monitor client's status and activity
 - RSS feed capable

- Includes several Celebration videos that can be further customized for fee by video production company
- Translucent bezel on sides of LCD contains 24 ultra-bright Nichia RGB LEDs for a multi-colored light show
- Pre-programmed with unique flashing patterns & different color combinations
- Backlight graphic panel can be substituted in place of 15.6" LCD
- Front of Video Topper has ability for custom branded graphic to be inserted
- Confetti capsules are sold separately (95-0124-00) are spring loaded (safe - no fireworks) and sprays over twenty color stripes with six colors and colorful effects for 13-19 feet (4-6 M) in the air
- Body is constructed of black UL-94 VO flame resistant plastic
- Requires +12vdc
- Three different mounting bases available (sold separately)
 - Flat (RBM-628C)
 - Round (RBM-628D)
 - Slant (RBM-628E)
- Base harness and power supply are both sold separately
- Tower light optional
- Patent Pending

*SAS is a registered trademark of IGT

**Design Your Celebration Topper
with the Matrix Below**

RBM-754 S - A1

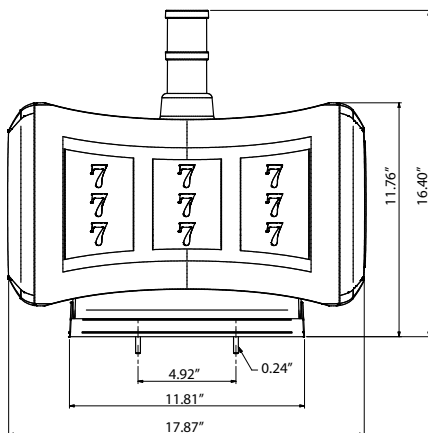
Chrome | Options | Display

A = Option	1 = Display
A = None	1 = 15.6" LCD
B = Confetti Tubes & Event Module	2 = Edge Backlight
C = Confetti Tubes Only	
D = Event Module Only	

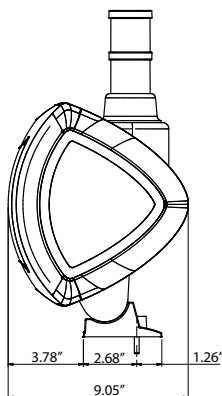
REEL TOPPER



SUZO HAPP



- Equipped with three Starpoint reels with 12 symbols/ stops that are 150mm in diameter and 90mm wide (a four reel version is in development)
- Illumination provided by multi-color Nichia LEDs
- Unique triangle shaped side illumination design provides attraction without distracting from the multi-reel action at the front of the topper
- Optional custom logo can be integrated on the center cap on the sides
- Bezel available in Chrome or Black Chrome
- Equipped with Xtopper which provides a customized USB control-board designed for Suzo-Happ by Heber
- Xtopper is a powerful tool which allows a game designer to make any interactive game concept
- Xtopper is supplied with development kit that works with Windows and Linux
- Ideal for OEMs to economically upgrade existing machines already installed in the casino to create a total new game concept



DIMENSIONS

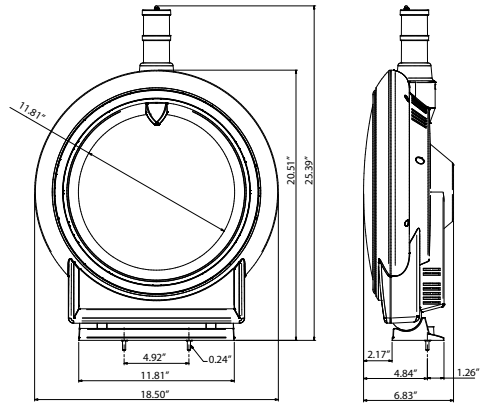
- Two on-board power supplies provide power (12VDC) to control both reels along with the illumination
- Durable flame resistant UL-94 V0 ABS plastic housing
- Adjustable mounting base included
- Easy to remove transparent cover for cleaning and maintenance
- Size: 17.87" W x 11.77" H x 9.05" D

104-1XXX

ROUND VIDEO TOPPER



SUZO HAPP



DIMENSIONS

- Offers the game designer flexibility to incorporate new and varied concepts
- Any games based on a disc/wheel type such as Roulette, Lottery Wheel, Clock Type game are economical and easy to develop
- Elegantly designed in Samsung 19" LCD E4 panel with 178° wide viewing angle
- Provides the appearance of the top monitor being round
- Bottom section has two windows where game features can be displayed or they can be blanked out
- Monitor adjustments are easily accessible
- Two different illumination effects available:
 - Multi-Color LEDs behind a translucent bezel
 - White LEDs behind a black chromed bezel
- Equipped with Xtopper which provides a customized RS232 (USB in future) control-board designed by Suzo-Happ
- Xtopper is a powerful tool which allows a game designer to make any interactive game concept
- Ideal for OEMs to economically upgrade existing machines already installed in the casino to create a total new game concept
- Durable flame resistant UL-94 VO ABS plastic housing
- Two on-board power supplies provide power to control both LCD panel along with the illumination
- Adjustable mounting base included
- CE Approved
- Size: 18.50" W x 20.51" H x 6.81" D

104-2XXX

ROUND TOPPER

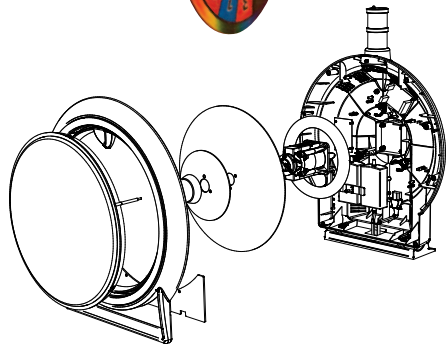


SUZO HAPP

- Leading technology from Suzo-Happ, Starpoint and Heber are combined within this unique product
- Easy and economical to develop any game based on a disc/wheel such as Roulette, Lottery Wheel, Clock Type game
- Integrated disc-mechanism with 2 motors creates a new dimension (Figure 1)
- Front and back disc mounted in sequence or a disc and arm can be independently controlled and run at different speeds and directions
- Equipped with Xtopper which provides a customized USB control-board designed for Suzo-Happ by Heber
- Xtopper is a powerful tool which allows a game designer to make any interactive game concept using the special disc and lighting effects
- Xtopper is supplied with a development kit that works with Windows and Linux
- Offers the game designer flexibility to incorporate new and varied concepts
- Bottom section has two windows where game features can be displayed or they can be blanked out



Figure 1



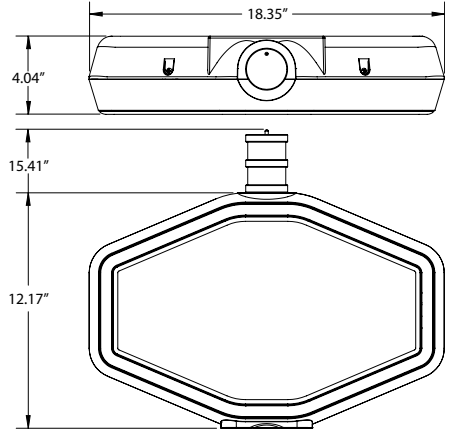
- Two different illumination effects available:
 - Multi-Color LEDs behind a translucent bezel
 - White LEDs behind a black chromed bezel
- Ideal for OEM's to economically upgrade existing machines already installed in the casino to create a total new game concept
- Two on-board power supplies provide power (12VDC) to control both disc units along with the illumination
- Ventilation holes with optional cooling fans
- Adjustable mounting base included
- Durable flame resistant UL-94 V0 ABS plastic housing
- Artwork panel not included
- Size: 18.50" W x 20.51" H x 6.81" D

104-22XXX

RGB POLYGON TOPPER



Pictured with Mounting Base
(Sold Separately)



DIMENSIONS



- Great for drawing increased attention to your hot, new, or top earning machines
- Completely backlit by 3 High Powered white LEDs that have a high Color Rendering Index (CRI) to make your graphics look outstanding
- Translucent bezel contains 48 ultra bright Nichia RGB LEDs for a multi-colored light show
- Includes 2 Tier tower light with color foils - Pink(1), Purple(1), Teal(1), Std. Blue(2), Std. Green(1), Orange(1), Red(1), Yellow(1) and White(1)
- Pre-programmed with 10 unique flashing patterns and 7 different color combinations
- Requires +12vdc (3 Amps)
- Body is constructed of black UL-94 VO flame resistant plastic
- Four different mounting bases available (sold separately)
 - Flat (95-2862-00)
 - Round (95-2863-00)
 - Slant (95-2865-00)
 - Arch (95-2864-00)
- Base harness (95-2866-00) and power supply (80-0071-00) are both sold separately
- Artwork panel not included
- USB Version available for Replacement use on IGT Games - to be plugged into IGT host for complete game control of unique colors and flashing patterns sent from USB host

\$339.00 ea.

95-2852-00

RGB Polygon Topper

\$299.00 ea.

91440000

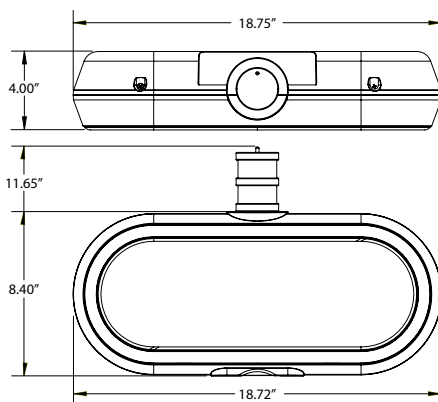
USB Version - Replacement for use on IGT Games

RGB PILL TOPPER

SUZO HAPP



Pictured with Mounting Base
(Sold Separately)



DIMENSIONS

- Great for drawing increased attention to your Hot New or top earning machines
- Completely backlit by 3 High Powered white LEDs that have a high Color Rendering Index (CRI) to make your graphics look outstanding
- Translucent bezel contains 44 ultra bright Nichia RGB LEDs for a multi-colored light show
- Includes 2 Tier tower light with color foils - Pink(1), Purple(1), Teal(1), Std. Blue(2), Std. Green(1), Orange(1), Red(1), Yellow(1) and White(1)
- Pre-programmed with 10 unique flashing patterns and 7 different color combinations
- Requires +12vdc (3 Amps)
- Body is constructed of black UL-94 VO flame resistant plastic
- Four different mounting bases available (sold separately)
 - Flat (95-2862-00)
 - Round (95-2863-00)
 - Slant (95-2865-00)
 - Arch (95-2864-00)

- Base harness (95-2866-00) and power supply (80-0071-00) are both sold separately
- Artwork panel not included
- USB Version available for Replacement use on IGT Games - to be plugged into IGT host for complete game control of unique colors and flashing patterns sent from USB host

\$339.00 ea.

95-2850-00

RGB Pill Topper

\$289.00 ea.

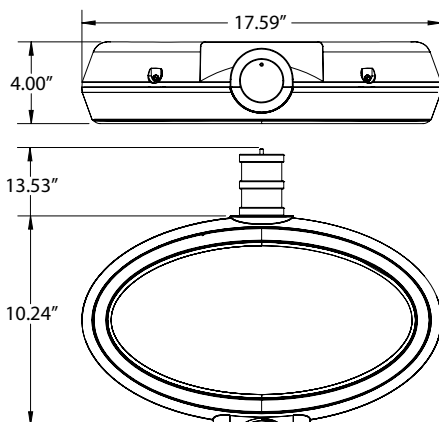
91440100

USB Version - Replacement for
use on IGT Games

RGB OVAL TOPPER



Pictured with Mounting Base
(Sold Separately)


SUZO HAPP

DIMENSIONS

- Great for drawing increased attention to your Hot New or top earning machines
- Completely backlit by 3 High Powered white LEDs that have a high Color Rendering Index (CRI) to make your graphics look outstanding
- Translucent bezel contains 40 ultra bright Nichia RGB LEDs for a multi-colored light show
- Includes 2 Tier tower light with color foils - Pink(1), Purple(1), Teal(1), Std. Blue(2), Std. Green(1), Orange(1), Red(1), Yellow(1) and White(1)
- Pre-programmed with 10 unique flashing patterns and 7 different color combinations
- Requires +12vdc (3 Amps)
- Body is constructed of black UL-94 VO flame resistant plastic
- Four different mounting bases available (sold separately)
 - Flat (95-2862-00)
 - Round (95-2863-00)
 - Slant (95-2865-00)
 - Arch (95-2864-00)
- Base harness (95-2866-00) and power supply (80-0071-00) are both sold separately
- Artwork panel not included
- USB Version available for Replacement use on IGT Games - to be plugged into IGT host for complete game control of unique colors and flashing patterns sent from USB host

\$339.00 ea.

95-2861-00

RGB Oval Topper

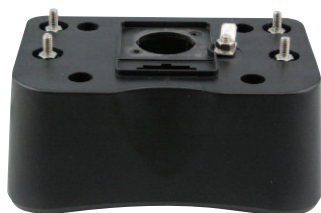
\$289.00 ea.

91440200

USB Version - Replacement for
use on IGT Games



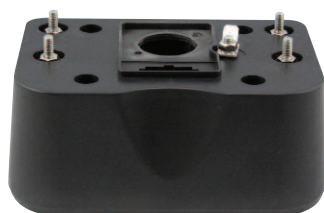
SUZO-HAPP RGB TOPPER ACCESSORIES



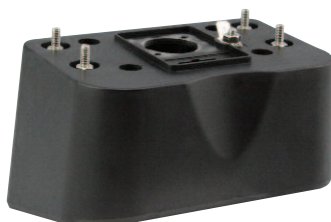
95-2862-00



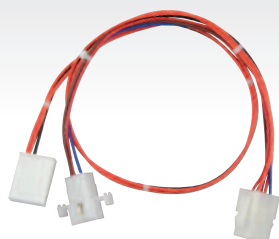
95-2863-00



95-2864-00



95-2865-00



95-2866-00



96-0769-00



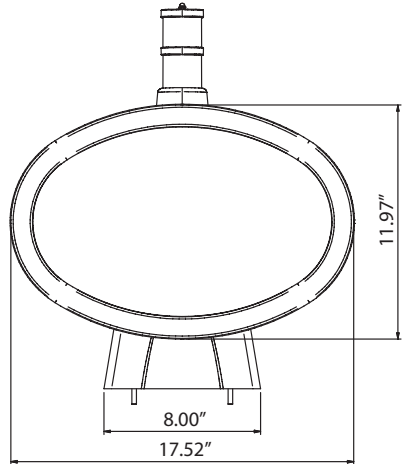
80-0071-00

Part Number	Description	Price per ea.
95-2862-00	Topper Base for RGB Toppers, Flat	\$9.00
95-2863-00	Topper Base for RGB Toppers, Round	\$9.00
95-2864-00	Topper Base for RGB Toppers, Arch	\$9.00
95-2865-00	Topper Base for RGB Toppers, Slant	\$9.00
95-2866-00	Base Harness for RGB Polygon, Pill & Oval Toppers	\$9.99
96-0769-00	Topper Harness Adapter Kit for IGT	\$7.20
80-0071-00	12VDC 3A Power Supply for RGB Polygon, Pill & Oval Toppers	\$39.95

RGB ELLIPSE TOPPER



SUZO HAPP



Pictured with Mounting Base
& Tower Light
(Sold Separately)

DIMENSIONS

- On board PCB allows stand alone operation or synchronization of up to eight topper boxes
- Up to 8 toppers can be synchronized using cables
- Toppers can be synchronized to create unique patterns, for example a snake pattern that runs from one topper to the next
- Seven pre-programmed flashing patterns
- Different attract modes including twinkling, full on, rotating left to right and right to left, flashing and more
- Ultra bright LEDs guarantee unequalled light output for a spectacular multi-colored lightshow
- Back lighted by 11Watt SL Lamp
- Translucent bezel contains 40 ultra bright Nichia RGB LEDs for a multi-colored light show
- Whole unit operates on 12VDC power
- Optional flat or radius mounting brackets with two mounting studs available to accommodate different cabinet configurations
- Body is constructed of black UL-94 VO ABS flame resistant plastic, color customization available
- Tower Light and artwork panel not included

\$295.00 ea.
104-06000

RGB TOWER LIGHT TOPPER



SUZO HAPP



CE

Pictured with Classic Tower Light
(Sold Separately)

Pictured with WMS, Aristocrat & Bally Tower Lights
(Not Included)

- Designed to be mounted on top of any standard round classic tower light with the included special top mounting bracket
- Works on any standard round tower light that has a diameter between 1.98" (50.29mm) and 2.00" (50.29mm)
- Great for advertising special machine features such as Multi-Denomination, Ticket-In Ticket-Out, Hot New Game, Server Based Gaming, etc.
- Translucent bezel with 20 ultra bright Nichia multi-color RGB LED's provide light output for a elegant multi-colored lightshow
- Pre-Programmed with 8 unique flashing patterns and 7 different color combinations (104-08000)
- Alternative Solid color pattern version available (104-08000-AM)
- Backlit by 9 white high power Nichia LEDs
- Operates on +12vdc power
- Comes with dual sized hex thumb nut that has English (6/32" Thread) and Metric (M4 Thread) for easy installation
- Several optional base/cap adapters make it easy to use on other styles of tower lights:
 - WMS Bluebird I (PR020-670-03)
 - Aristocrat Veridian (95-2860-00)
 - Bally Super Candle (95-0034-00)
- Optional power harness 11-2801-00 makes it easy to install on existing games by simply tapping into +12vdc and ground or simply use the power supply 80-0414-10 into the service outlet inside of machine
- Artwork panel and tower light are not included
- Durable flame retardant UL94 V0 ABS plastic housing
- Small Size: 7.64" W x 6.83" H x 2.34" D

\$149.95 ea.

104-08000 Topper with Standard Color Pattern

\$149.95 ea.

104-08000-AM Topper with AM Color Pattern

RGB TOWER LIGHT TOPPER ACCESSORIES



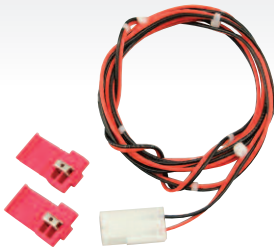
PR020-670-03
Adapter for WMS Bluebird I
Tower Light



95-2860-00
Adapter for Aristocrat Veridian
Tower Light



95-0034-00
Adapter for Bally
Super Candle



11-2801-00



80-0414-10



95-3656-00



95-3657-00



95-3658-00



95-3659-00



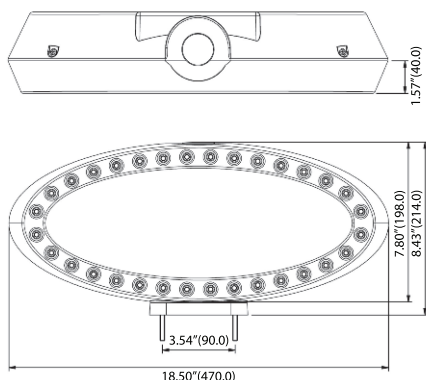
95-3660-00

Part Number	Description	Price per ea.
PR020-670-03	Base/Cap Adapter for WMS Bluebird I Tower Light	\$15.45
95-2860-00	Base/Cap Adapter for Aristocrat Veridian Tower Light	\$15.00
95-0034-00	Base/Cap Adapter for Bally Super Candle	\$20.00
11-2801-00	Power Extension Harness Kit for RGB Tower Light Topper	\$9.30
80-0414-10	Power Supply, +12vdc 2.5A for RGB Tower Light Topper	\$38.30
95-3656-00	"Hot New Game" Plexi for Tower Light Topper	\$36.05
95-3657-00	1 Cent Denomination Plexi for Tower Light Topper	\$36.05
95-3658-00	5 Cents Denomination Plexi for Tower Light Topper	\$36.05
95-3659-00	25 Cents Denomination Plexi for Tower Light Topper	\$36.05
95-3660-00	\$1 Denomination Plexi for Tower Light Topper	\$36.05

LED XENON TOPPER



SUZO HAPP



DIMENSIONS



95-2846-00



104-0025

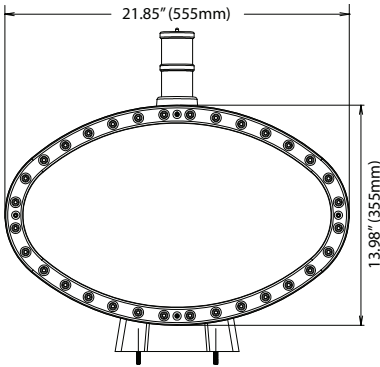
- The LED Xenon Topper has a low profile to accommodate locations where ceiling height is a problem
- On board PCB allows stand alone operation or up to 8 toppers to be synchronized to work in a collective pattern
- Toppers can be synchronized using cables to create unique patterns, for example, a snake pattern that runs from one topper to the next
- Made of durable flame resistant UL-94 VO ABS plastics with chrome bezel
- Back lighted by 11Watt SL Lamp
- Ultra bright LEDs guarantee unequalled light output for a spectacular lightshow
- Chrome bezel contains 32 bright LEDs
- Seven pre-programmed flashing patterns
- Different attract modes including twinkling, waves, fades and rollercoaster effects
- Whole unit operates on 12VDC power
- Optional mounting base (104-0025)
- Optional blank plexi panel (96-0915-00)
- Tower light optional
- Artwork not included or available

Part Number	Description	Price per ea.
104-07890SM	LED Xenon Topper (Can be Synchronized)	\$249.95
95-2846-00	Mounting Base for LED Xenon Topper for Round Top Machines	\$23.65
104-0025	Mounting Base for LED Xenon Topper for Flat Top Machines	\$10.00

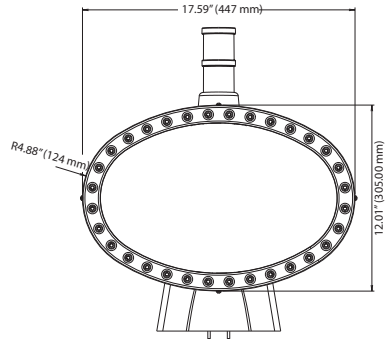
ELLIPSE & MINI ELLIPSE TOPPER



Pictured with Mounting Base
& Tower Light
(Sold Separately)



104-05890 DIMENSIONS



104-06890 DIMENSIONS

- Made of durable plastics with bright chrome bezel
- Back lighted by 11Watt SL Lamp
- Panels surrounded by 32 bright white LEDs
- Different attract modes including twinkling, full on, rotating left to right and right to left
- Whole unit operates on 12VDC power
- Optional flat or radius mounting brackets with two mounting studs available to accommodate different cabinet configurations
- Body is constructed of black flame retardant UL94 VO ABS plastic, color customization available

- Optional towerlight sold separately
- Topper mounting base sold separately
- Optional blank plexi panel (95-2738-00)
- Optional gold or black chrome bezel available at extra charge
- Artwork not included or available

\$293.55 ea.

104-05890 Ellipse Topper

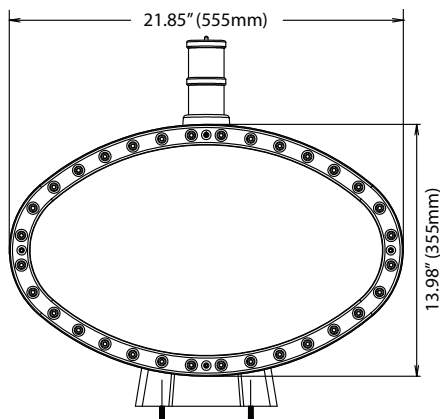
\$303.85 ea.

104-06890 Mini Ellipse Topper

LCD ELLIPSE TOPPER



Pictured with Mounting Base
& Tower Light
(Sold Separately)



DIMENSIONS

SUZO HAPP

- Features a 15" LCD monitor and media controller board
- Display your own MPEG video and/or JPEG pictures
- Graphic plexi insert included gives the LCD an added layer of protection
- Durable flame retardant UL94 VO ABS plastic construction with bright chrome bezel
- Bezel surrounded by 32 bright white LEDs
- Different attract modes including twinkling, full on, rotating left to right and right to left
- Entire unit operates on one 12VDC power supply included (80-0414-10)
- Body is constructed of black styrene, color customization available

- Topper mounting base sold separately
- Optional tower light sold separately
- Optional gold or black chrome bezel available at an additional charge
- Artwork not included or available

\$799.00 ea.

104-05890-15K

Without Media Controller Board &
Compact Flash Card

\$900.00 ea.

104-05891

With Media Controller Board &
1GB Compact Flash Card

SUZO-HAPP LED TOPPER ACCESSORIES



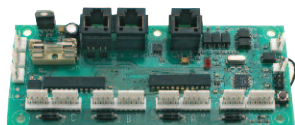
SUZO HAPP



22-0139



80-0414-10



104-0051



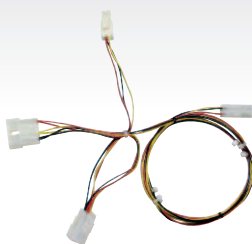
9902-11



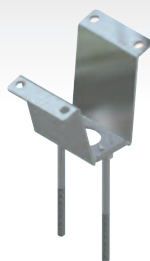
104-0020-1



96-0769-00



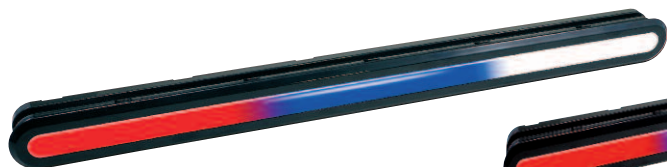
96-0565-00



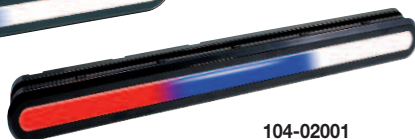
104-0001

Part Number	Description	Price per ea.
22-0139	24V Ballast for Atronic e-motion Toppers	\$43.80
22-0138	12V Ballast for Atronic e-motion Toppers	\$43.80
80-0414-10	12VDC 2.5A Power Supply for use with Suzo-Happ Toppers	\$38.30
104-0051	Topper Box Synchronizer	\$102.95
9902-11CW	Cool White Replacement Compact Fluorescent Lamp	\$4.80
9902-11	Warm White Replacement Compact Fluorescent Lamp	\$7.20
104-0020-1	Topper Mounting Base, Flat	\$11.30
104-0010-1	Topper Mounting Base, 15° Slant Angle	\$11.30
104-0015-1	Topper Mounting Base, 260° Curved for Round Top	\$11.30
96-0769-00	Harness Adapter Kit for Topper Boxes	\$7.20
96-0565-00	Tower Light Adapter Harness	\$8.95
104-0001	Tower Light Adapter Bracket	\$5.10

RGB LED LIGHT STRIPS

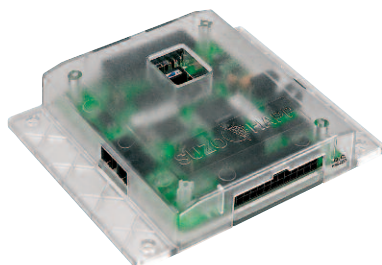


104-02000



104-02001

- Light strips with opaque bezel contains bright multi color LEDs and when mounted to your cabinet they provide a dazzling light show
- Can be used by themselves
- When used with RGB Xenon Topper it runs from the topper box into the light strips and back
- Wire harness sold separately



104-0062

LED Light Strip Controller sold separately

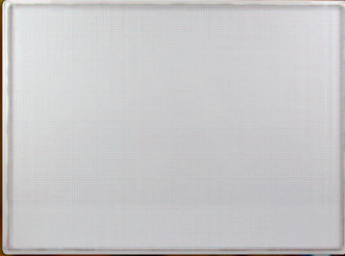
- Light strip controllers provide seven pre-defined color and seven pre-defined flashing patterns
- Can synchronize/link color and flashing patterns between controllers and light strips (link cables sold separately)
- Controllers available for 20 LEDs or 40 LEDs
- +12vdc Operation



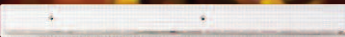
104-0056

Part Number	Description	Price per ea.
104-02000	RGB LED Light Strip - 20 LEDs	\$87.55
104-02001	RGB LED Light Strip - 10 LEDs	\$72.10
104-0062	Light Strip Controller - 40 LEDs	\$82.40
104-0056	Light Strip Controller - 20 LEDs	\$72.10
104-0054	Harness for RGB LED Light Strip - for one 20 LED Strip	\$15.25
104-0053	Harness for RGB LED Light Strip - for two 10 LED Strips	\$11.80

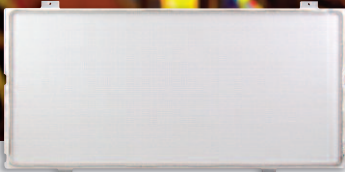
PRISMPRO LED LIGHT PANELS FOR SLOT MACHINES



Panel for Top Glass



Panel for Reel Glass



Panel for Lower Glass

**Superior lighting technology
now used in Gaming industry!**

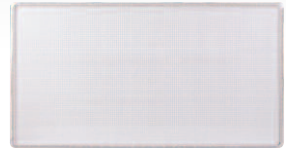
**LED Panels Available for:
IGT S2000, IGT GAME KING & BALLY 6000
Gaming Machines**



Panel for Rounded Top Glass



Panel for Upper Glass



Panel for Lower Glass

- No hot or cold spots
- Illuminates from the sides of the frame and creates a smooth full light without bright spots and shadows that occur with traditional back-lit panels
- Restore your older machines with a new, modern look
- Each model is engineered specifically for the exact application
- Low heat generation saves life of entire machine while significantly lowering air conditioning costs to casino floor

- PrismPro LED panels offer energy savings from 60-80%
- No mercury contamination to the planet and low carbon footprint
- Green energy efficient LED technology
- Easy to install with no electrical or mechanical modifications to make
- Available in three shades of white: Warm White, 3500K; Cool White, 5100K; Daylight, 6000K
- 5 year typical lifespan

Visit suzohapp.com for Details & Pricing

ECONO LEDS FOR IGT SLOT MACHINES

- Energy efficient units available in daylight, warm white and cool white
- Easy installation - mounts in existing frame in just seconds with no modifications
- Plugs into existing harness
- Adjustable angle for best dispersion
- Diffusion film available as option
- Operates from standard 24 VDC of the machine
- Colors available: warm white (3000-3500k), cool white (4500-5000k), daylight (6000-6500k)
- Units for other slot machines available upon request



70-0080-00



70-0062-00



70-0170-00



70-0074-00



70-0098-00

Visit suzohapp.com for
Details & Pricing

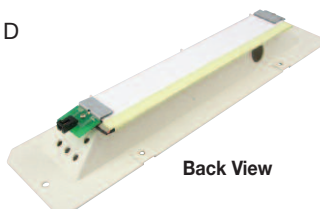


LIGHT PRO EDGE-LIT LED PANEL FOR IGT DENOM PANELS

- For use in IGT Game King upright and I Games
- Dramatically improves the lighting of the denom arrow panel providing improved color dispersion without shadows
- Includes LED edge-lit panel installed on rugged plastic housing for easy installation
- Energy efficient panel only requires +12vdc 200 mA of power
- Eliminates the use of lamps, which frequently burn out
- Low heat generation, 70% lower power consumption
- Easy to install, plugs directly into existing circuit board harness
- Size: 13-1/8" L x 3-1/8" W x 1-1/4" D
- 5-8 year life span
- 3-year warranty on LED circuit



Graphic Panel
Not Included



Back View



\$29.95 ea.
70-36588-00



LIGHT PRO SLANT TOP EDGE-LIT REFLECTIVE LED SIDE PANEL

Never Replace a F4 Fluorescent or Ballast Again!

- For IGT 19" slant top games
- Eliminates ballast and replaces the F4 lamp and entire fixture assembly
- Plastic mounting tray with 36" harness and cool white LEDs
- Improved color dispersion without shadows
- 5-8 year life span
- Low heat generation, 70% lower power consumption
- Easy to install, no tools required
- 36" Power cord supplied for direct plug-in, operates on 24DC
- 3 year warranty on LED circuit



Graphic Panel
Not Included

\$29.95 ea.
70-36586-00



LIGHT PRO EDGE-LIT LED PANEL FOR IGT BARTOP

Never Replace those #73 bulbs Again!

- For use in IGT Bartop games
- Dramatically improves the lighting of the game legend panel providing improved color dispersion without shadows
- Energy efficient led panel only requires +12vdc 100 mA of power
- Eliminates the use of the two existing 73 bulbs
- Low heat generation, 70% lower power consumption
- Easy to install, no tools required, plugs directly into the existing lamp connectors
- LED panel size: 4" W x 3" H
- 5-8 year life span
- 3 year warranty on LED circuit



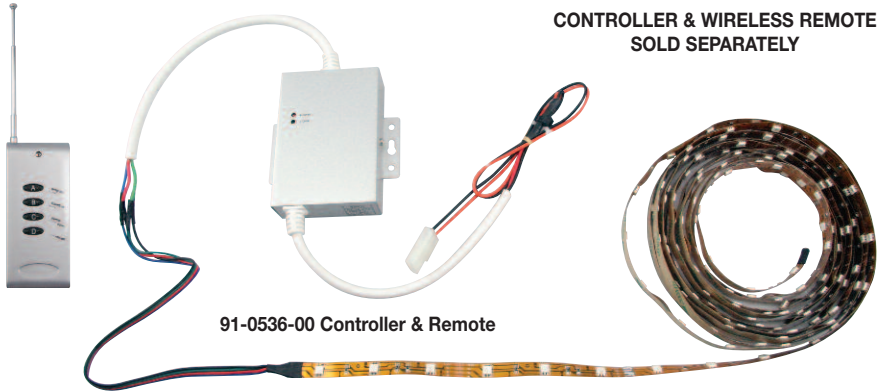
Graphic Panel
Not Included

White Plastic Tray
Not Included

\$24.95 ea.
70-36587-00



FLEXIBLE SMD LED LIGHT STRIP



**CONTROLLER & WIRELESS REMOTE
SOLD SEPARATELY**

91-0536-00 Controller & Remote

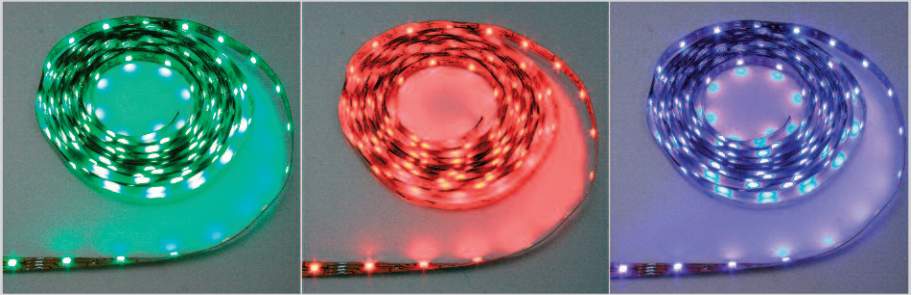


DETAIL VIEW OF LED LIGHT STRIP

Attract More Attention and Increase Your Earnings!

- Easily installs in or around your machines to provide an updated look to draw more attention and increase earnings
- Great for amusement parks and games, casinos, slot machines, arcades, family entertainment centers, theaters, backlighting, decorative lighting, etc.
- Ideal way to increase earnings on your cranes and pushers
- Very thin continuous length flexible LED light strips
- 16.4 ft. rolls can be separated every 3 LEDs and reconnected again
- 300 super bright high-quality SMD LEDs per reel with 120 degree wide angle illumination
- 3M adhesive tape on back for easy installation
- Operates on +12vdc power supply (80-0414-10)
- Solid state, high shock or vibration resistant
- LEDs controlled by controller and wireless remote (sold separately)
- Each controller can run 65.62 feet (20 meters) of LED strips
- Long life: 50,000 hours
- Less power consumption than traditional lights
- No RF interference
- Sold in reels of 16.4 ft. (5 meters)
- +12VDC; 20W

FLEXIBLE SMD LED LIGHT STRIP


91-0537-00

80-0414-10

Part Number	Description	Price per ea.
91-0162-00	16.4 ft. Warm White Flexible LED Light Strip	\$35.95
91-0163-00	16.4 ft. Cool White Flexible LED Light Strip	\$47.05
91-0257-00	16.4 ft. Green Flexible LED Light Strip	\$38.95
91-0531-00	16.4 ft. Blue Flexible LED Light Strip	\$58.95
91-0532-00	16.4 ft. Yellow Flexible LED Light Strip	\$74.95
91-0533-00	16.4 ft. Red Flexible LED Light Strip	\$74.95
91-0534-00	16.4 ft. RGB Flexible LED Light Strip	\$66.95
80-0414-10	12VDC Power Supply, 2.5A	\$38.50
91-0537-00	Controller and Wireless Remote for Single Color Light Strip	\$33.95
91-0536-00	Controller and Wireless Remote for RGB Light Strip	\$63.95

DATAVAC® ESD SAFE VACUUM/BLOWER

Built to Government Specifications!

Developed for the United States Postal Service the DataVac®/3ESD is a complete anti-static vacuum/blower and dusting system designed specifically to keep expensive computers, printers, scanners, copiers, fax machines and other electronic office equipment, thoroughly clean and operating at peak efficiency.

With its 4-Stage HEPA filtration system, the DataVac®/3ESD is 99.97% effective at trapping dust particles as small as 0.3 microns preventing them from re-contaminating the office environment.

- **Anti-Static Wrist Strap** - Prevents the buildup of static electricity that can discharge and seriously damage sensitive equipment
- **Powerful, 2-speed, 1.7 Peak Horsepower Motor** - Generates plenty of power to reach down deep and clean out even the most stubborn dust, dirt and debris
- **New Ballistic Nylon Carry Case** - With comfortable shoulder strap and attachment storage pockets
- **Integrated Toner Filter System** - Quickly and thoroughly cleans up messy toner spills from printers and copiers
- **Complete Range of Static-Dissipating Attachments** - To handle every conceivable office and IT equipment cleaning application
- **Rugged, Heavy-Duty, All-Steel Body** - Designed to withstand many years of tough professional use
- **Accessories Included** - Anti-Static 3-to-6 ft. Stretch Hose, Wrist Strap, Dusting Brush, Crevice Tool, 4-piece Micro Tool Kit, 6 Disposable Toner Filter Bags, Replacement Foam Filter, Shoulder Strap and Fully Padded, Soft Carry Case
- **American Quality and Service** - Made in USA



MODEL DV-3ESD1 SPECIFICATIONS

Construction	Sturdy all-steel
Motor	2-speed 1.7 Peak HP, 7.5 Amps
Air Flow	100 CFM, 80" of water lift (sealed suction)
Body Weight	8 lbs.
Power Cord	12 ft., heavy-duty, 3-conductor
Warranty	2-year, motor



\$299.99 ea.
92-0276-00

DATAVAC® ELECTRIC DUSTER

Never Buy Canned Air Again!

- **More effective** -
Powerful 500-watt electric motor blasts off dust, dirt and debris to keep expensive computer and electronic equipment clean and running at peak efficiency
- **More economical** -
All steel and built to last
- **"Greener"** -
Electric power eliminates the need for dangerous, environmentally damaging aerosol cans
- **Safer** -
Blows clean, dry, filtered air safe for all equipment; contains no dangerous propellants
- **Attachments Included** -
Air-Pin Pointer, Air, Concentrator nozzle, Air-Flare nozzle and 4-piece detailing tool kit
- Made in USA



\$79.95 ea.
92-29891-00



MODEL DV-3ESD1 SPECIFICATIONS

Construction	All steel
Motor	.75HP, single fan, 120V, 4.5A, 500W
Air Flow	70CFM
Weight	2.75 lbs.
Power Cord	12 ft.
Filter	E/Z-change foam
Warranty	1 Year on parts & labor, 5 Years on motor



Mini-Duffel Bag (Sold Separately)

- Great for carrying small tools such as electric duster with all of the attachments
- Size: 12" x 7" x 6"

\$18.95 ea.
27-0263-00



ARISTAR® 100GT TABLE GAME AIR PURIFICATION SYSTEM



**Smoke, Odor & Dust Management for
Gaming Tables, Count Rooms, Poker
Rooms and More!**

Airistar® 100GT System

The Airistar® 100GT represents the latest advancement in localized air purification within the table game area, providing dealers with a wall of purified air to direct smoke and odors away from them. The system includes a diffuser that can be attached to or easily retrofitted into a table game.

The filtration unit can be mounted under the table or on the floor. The Airistar® 100GT purification system not only works to keep smoke away from the dealer, it also delivers clean air to the area around the table. The front of the diffuser directs the clean air at a 60 degree angle towards the patrons to provide an air curtain between smoking patrons and the employee, while the air from the rear of the diffuser is directed straight up to provide the employee with purified air.

The Airistar® 100GT is a mechanical filtration system that utilizes the most advanced filter media available to strip away unwanted particles without adding dangerous ozone or harmful chemicals to the air.



Key Features and Benefits

- **Three stage purification process:**
Airistar® has developed a unique three-stage air purification process that features Melt-Blown Fiber filter media.
- **Melt-Blown Fiber Filter Media:**
Melt-Blown Fiber filter media is the next generation of HEPA filter media. The Melt-Blown Fiber filter media used in the Airistar® 100GT is rated to capture 95% of particles larger than 0.3 microns at airflow ratios that surpass traditional HEPA filters.
- **Activated Carbon Filter:**
Airistar's multipurpose VOC filter helps eliminate unwanted gases and fumes associated with tobacco products.
- **Airflow Rates:**
Airflow rates of up to 130 CFM can be achieved when the unit is set to maximum blower speed.

Three Stage Purification

Airistar's three stage purification process allows the Airistar® 100GT to deliver up to 95% cleaner air.

Stage 1: Electrostatic Pre-filter – Merv 7

Stage 2: Melt-Blown Fiber Filter rated 95% efficient to 0.3 microns

Stage 3: VOC / Carbon Filter gas and odor control

ARISTAR® 100GT TABLE GAME AIR PURIFICATION SYSTEM



Security

Security is always a concern and the Airistar® 100GT has been engineered so that it does not enable table theft / dealer and player tampering.

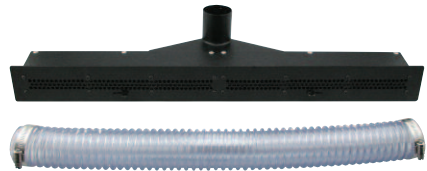
- Specialty screws are used to prevent access to the components inside.
- An overhang of a quarter of an inch on top of the diffuser prevents anything from being slid between the table and the diffuser.
- Exhaust holes on top of the diffuser are sized for security but large enough for effective air directioning.

Installation

The Airistar® 100GT is designed for various installation options. The purifier and diffuser are connected with a flexible plastic hose so that the purifier can be mounted in any location underneath the table or on the floor. The diffuser itself can either be inserted into the table between the chip tray and back rail or mounted directly to the back rail.



Replacement Filters



Diffuser

Specifications

- Purifier dimensions:
10" H x 11" W x 16" D
- Diffuser dimensions:
3" H x 2.5" W x 25" L;
7" D under table
- Load rated airflow range: 60 to 130 CFM based on settings
- Maximum amp draw: 1.0 amps @ 110V
- Two speed fan control
- Louvers on diffuser will close to restrict airflow by 25%

Part Number	Description	Price per ea.
92-0124-00	Airistar® 100GT Table Game Air Purification System (Includes 1 Set of Filters)	\$1,395.00
92-0249-00	Airistar® 100GT Internal Prefilter <i>Color Code: Green</i>	\$24.95
92-0255-00	Airistar® 100GT Melt Blown Fiber Filter <i>Color Code: Yellow</i>	\$56.00
92-0256-00	Airistar® 100GT VOC/Carbon Filter <i>Color Code: Red</i>	\$38.95

The Airstar® 500 is capable of solving challenging indoor air quality issues for a wide range of applications. By utilizing HEXAFLOW™ a proprietary six-stage air purification process, and delivering airflow of up to 500 cubic feet per minute (CFM), the Airstar® 500 provides more air changes per hour than equivalent size units on the market.

The Airstar® 500 is a mechanical filtration system that utilizes the most advanced filter media available to strip away unwanted particles without adding dangerous ozone or harmful chemicals to the air. Whether you are faced with excessive dust, smoke, allergens, fumes, odors, airborne bacteria or mold spores, the Airstar® 500 will effectively meet your air purification needs.



Key Features and Benefits

- **HEXAFLOW™ Purification Process:** Airstar® has developed a unique six-stage air purification process that features Melt-Blown Fiber filter media.
- **Melt-Blown Fiber Filter Media:** Melt-Blown Fiber filter media is the next generation of HEPA filter media. The Melt-Blown Fiber filter media used by Airstar® is rated to capture 99.97% of particles larger than 0.3 microns at airflow ratios that surpass traditional HEPA filter media.
- **Activated Carbon Filter:** Airstar's multipurpose VOC filter helps eliminate unwanted gases and fumes encountered in our everyday lives.
- **Airflow Rates:** Airflow rates of up to 500 CFM can be achieved when the unit is set to maximum blower speed.
- **Programmable Control Panel:** The Airstar® 500 has a programmable control panel featuring personalized runtime programs and filter status bars for replacement notification*.

**Filter bars are minimum guidelines for residential use, monthly visual inspections are recommended for smoking environments.*

HEXAFLOW™ Purification

Airstar's HEXAFLOW™ purification process allows the Airstar® 500 to deliver up to 99.97% cleaner air.

- Stage 1: Electrostatic Pre-filter – Merv 8
- Stage 2 & 3: Anti-microbial and Pleated Electrostatic Filters
- Stage 4: Melt-Blown Fiber rated 99.97% down to 0.3 microns
- Stage 5: Activated Carbon Filter (Custom VOC filters available)
- Stage 6: 1 Titanium-Coated UV-C Germicidal Ultraviolet Bulb

The Airstar® 500 utilizes the HEXAFLOW™ purification process to remove a variety of airborne contaminants from the air. This six-stage air purification process can effectively remove 99.97% of particles 0.3 microns or larger.

That includes such common contaminants as bacteria, mold and fungal spores, pet dander, and pollen in the first purification cycle. This process will also remove as much as 65% of tobacco smoke, smog, and many other fumes and gases from the air on the first purification cycle.

AIRISTAR® 500 AIR PURIFICATION SYSTEM

Custom VOC Filters

Volatile organic compounds (VOCs) are gasses that are emitted from certain solids and liquids. These gasses contain a variety of chemicals and odors that can cause short or long term health consequences. Many household items such as carpeting, cleaning fluids, paints and glues contain harmful VOCs.

Our standard Activated Carbon filter is a multipurpose VOC filter that will virtually eliminate common VOCs that are encountered in our everyday lives. Better still, we can customize our VOC filter for environments where the chemicals and odors emitted require specialized filtration.

Indoor Air Quality (IAQ)

Quality indoor air is essential to a healthy lifestyle. Deterioration in IAQ can be linked to many serious health concerns and can often be attributed to one of the following conditions:

- Inadequate outside air exchange
- Microbial growth
- Poor maintenance / operation of building facilities
- Old, inadequate or not properly functioning ventilation systems
- The continual addition of airborne contaminants such as smoke, allergens, bacteria, fumes or odors

Efficient airborne contaminant removal and increased air changes per hour set the Airistar® 500 apart from the competition in alleviating poor IAQ.

Airistar's HEXAFLOW™ purification process efficiently addresses the three primary forms of indoor air contamination, particulate matter, microbes and VOCs, to create quality indoor air environments.

Performance

Sample performance metrics for the Airistar® 500 unit, in terms of air changes per hour, are as follows:

7,500 Cubic Feet

Space: 940 sq. ft. with 8 ft. ceilings

Airflow: 500 cubic feet per minute

Rate of Change: 4.0 air changes/hour (1 unit)

4,800 Cubic Feet

Space: 600 sq. ft. with 8 ft. ceilings

Airflow: 500 cubic feet per minute

Rate of Change: 6.3 air changes/hour (1 unit)

Specifications

- Dimensions: 29" H x 13.75" W x 18" D
- Weight: 70 lbs
- Industrial grade casters for enhanced mobility
- Load rated airflow range: 300 to 500 CFM
- Maximum amp draw: 1.9 amps @ 110V



Part Number	Description	Price per ea.
92-0076-00	Airistar® 500 Air Purification System (Includes 1 Set of Filters)	\$1,495.00
92-0182-00	Airistar® 500 External Prefilter <i>Color Code: Blue</i>	\$8.50
92-0183-00	Airistar® 500 Internal Prefilter <i>Color Code: Green</i>	\$11.25
92-0185-00	Airistar® 500 Melt Blown Fiber Filter <i>Color Code: Yellow</i>	\$93.00
92-0186-00	Airistar® 500 VOC/Carbon Filter <i>Color Code: Red</i>	\$33.50
92-0218-00	Airistar® UV Bulb (Requires 2)	\$15.75

The Airstar® 1000 is capable of delivering airflow of up to 1000 cubic feet per minute (CFM), which makes it a perfect fit within a variety of different commercial and industrial applications. The Airstar® 1000 is designed to handle challenging indoor air quality issues in larger spaces and utilizes HEXAFLOW™, a proprietary six-stage air purification process, to provide more air changes per hour than equivalent size units on the market.

The Airstar® 1000 is a mechanical filtration system that utilizes the most advanced filter media available to strip away unwanted particles without adding dangerous ozone or harmful chemicals to the air. Whether you are faced with excessive dust, smoke, allergens, fumes, odors, airborne bacteria or mold spores, the Airstar® 1000 will effectively meet your air purification needs.



Key Features and Benefits

- **HEXAFLOW™ Purification Process:**
Airstar® has developed a unique six-stage air purification process that features Melt-Blown Fiber filter media.
- **Melt-Blown Fiber Filter Media:**
Melt-Blown Fiber filter media is the next generation of HEPA filter media. The Melt-Blown Fiber filter media used by Airstar® is rated to capture 99.97% of particles larger than 0.3 microns at airflow ratios that surpass traditional HEPA filters.
- **Activated Carbon Filter:**
Airstar's multipurpose VOC filter helps eliminate unwanted gases and fumes encountered in our everyday lives.
- **Airflow Rates:**
Airflow rates of up to 1000 CFM can be achieved when the unit is set to maximum blower speed.

HEXAFLOW™ Purification

Airstar's HEXAFLOW™ purification process allows the Airstar® 1000 to deliver up to 99.97% cleaner air.

- Stage 1: Electrostatic Pre-filter – Merv 8
- Stage 2 & 3: Anti-microbial and Pleated Electrostatic Filters
- Stage 4: Melt-Blown Fiber rated 99.97% down to 0.3 microns
- Stage 5: Activated Carbon Filter (Custom VOC filters available)
- Stage 6: 2 Titanium-Coated UV-C Germicidal Ultraviolet Bulbs

The Airstar® 1000 utilizes the HEXAFLOW™ purification process to remove a variety of airborne contaminants from the air. This six-stage air purification process can effectively remove 99.97% of particles 0.3 microns or larger.

That includes such common contaminants as bacteria, mold and fungal spores, pet dander, and pollen in the first purification cycle. This process will also remove as much as 65% of tobacco smoke, smog, and many other fumes and gases from the air on the first purification cycle.

AIRISTAR® 1000 AIR PURIFICATION SYSTEM

Custom VOC Filters

Volatile organic compounds (VOCs) are gasses that are emitted from certain solids and liquids. These gasses contain a variety of chemicals and odors that can cause short or long term health consequences. Many household items such as carpeting, cleaning fluids, paints and glues contain harmful VOCs.

Our standard Activated Carbon filter is a multipurpose VOC filter that will virtually eliminate common VOCs that are encountered in our everyday lives.

Better still, we can customize our VOC filter for environments where the chemicals and odors emitted require specialized filtration.

Indoor Air Quality (IAQ)

Quality indoor air is essential to a healthy lifestyle. Deterioration in IAQ can be linked to many serious health concerns and can often be attributed to one of the following conditions:

- Inadequate outside air exchange
- Microbial growth
- Poor maintenance / operation of building facilities
- Old, inadequate or not properly functioning ventilation systems
- The continual addition of airborne contaminants such as smoke, allergens, bacteria, fumes or odors

Efficient airborne contaminant removal and increased air changes per hour set the Airistar® 1000 apart from the competition in alleviating poor IAQ.

Airistar's HEXAFLOW™ purification process efficiently addresses the three primary forms of indoor air contamination, particulate matter, microbes and VOCs, to create quality indoor air environments.

Performance

Sample performance metrics for the Airistar® 1000 unit, in terms of air changes per hour, are as follows:

15,000 Cubic Feet

Space: 1,875 sq. ft. with 8 ft. ceilings
Airflow: 1000 cubic feet per minute
Rate of Change: 4.0 air changes/hour (1 unit)

7,500 Cubic Feet

Space: 937 sq. ft. with 8 ft. ceilings
Airflow: 1000 cubic feet per minute
Rate of Change: 8.0 air changes/hour (1 unit)

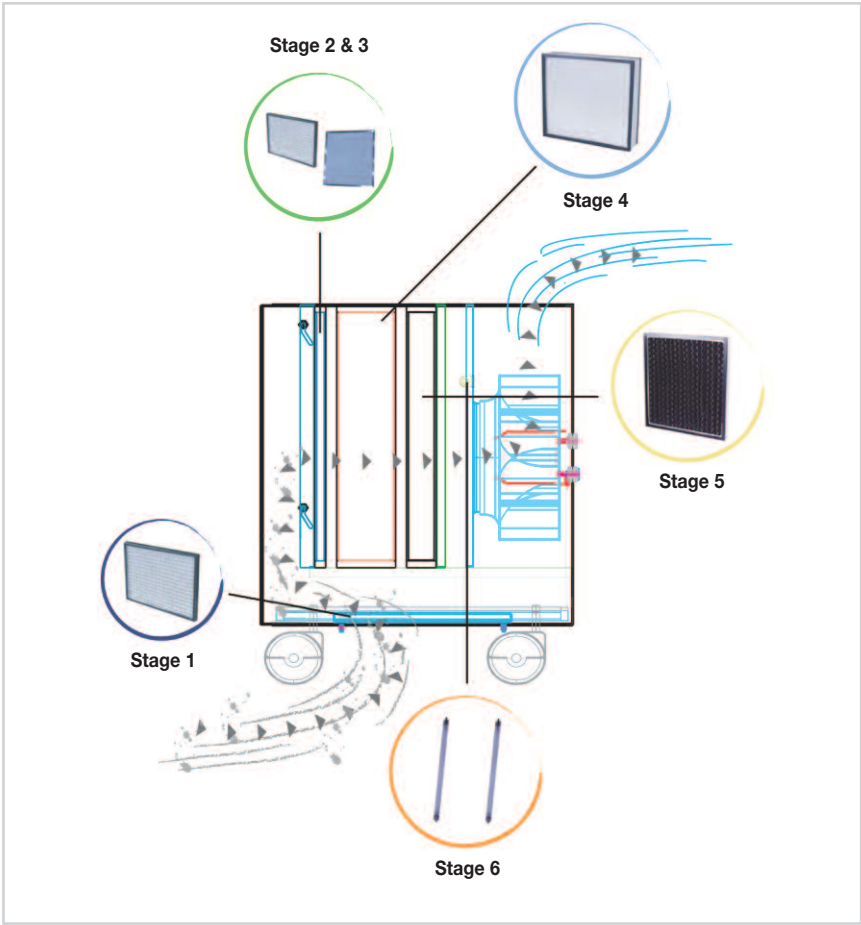
Specifications

- Dimensions: 34.25" H x 21" W x 22.2" D
- Weight: 110 lbs
- Industrial grade casters for enhanced mobility
- Load rated airflow range: 700 to 1000 CFM
- Maximum amp draw: 2.3 amps @ 110V



Part Number	Description	Price per ea.
92-0130-00	Airistar® 1000 Air Purification System (Includes 1 Set of Filters)	\$3,765.00
92-0229-00	Airistar® 1000 External Prefilter <i>Color Code: Blue</i>	\$9.50
92-0237-00	Airistar® 1000 Internal Prefilter <i>Color Code: Green</i>	\$15.00
92-0248-00	Airistar® 1000 Internal Prefilter - Washable <i>Color Code: Green</i>	\$41.64
92-0243-00	Airistar® 1000 Melt Blown Fiber Filter <i>Color Code: Yellow</i>	\$157.75
92-0246-00	Airistar® 1000 VOC/Carbon Filter <i>Color Code: Red</i>	\$39.50
92-0218-00	Airistar® UV Bulb (Requires 2)	\$15.75

ARISTAR® HEXAFLOW™
SIX STAGE PURIFICATION PROCESS



ARISTAR® HEXAFLOW™

SIX STAGE PURIFICATION PROCESS

Stage 1: Pre-filter

This filter blocks large particles such as hair and pollen that measure 10-15 microns or larger. Using the Pre-filter to capture large particles saves the subsequent filters so that they can remove the finer particles from the air.

Stage 2 & 3: Dual Anti-microbial and Pleated Electrostatic Filter (Green)

This dual filter catches pet dander, fine pollen and other allergens that range from 7-18 microns in size. The Anti-microbial Filter attracts particles with static electricity and then disinfects the attracted particles with an anti-microbial solution. The Pleated Electrostatic filter acts as a net for the Anti-microbial Filter by catching any particles that are blown off of the first filter.

Stage 4: Melt-Blown Fiber Filter (Yellow) 99.97%

Melt-Blown Fiber Filter is a High Airflow Particulate Air Filter that has the ability to remove particles as small as insecticide dust, smog and tobacco smoke. Melt-Blown Fiber Filter filtration capture 99.97% of particles larger than 0.3 microns at airflow ratios that surpass traditional HEPA filter abilities.

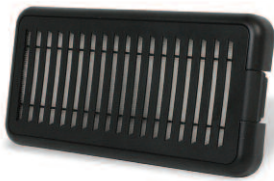
Stage 5: Activated Carbon Filter (Pleated Custom VOC) (Red)

Our Pleated VOC Activated Carbon Filter collects fumes and odors associated with smoke, formaldehyde, hospitals and mold/mildew. Carbon is extremely porous, which makes it a highly efficient natural filter. In our Pleated Activated Carbon Filter, the air actually travels through approximately 1,000,000-2,000,000 sq. feet of adsorption surface area before it leaves our system.

Stage 6: Ultraviolet (UV) Bulbs

The purpose of a Germicidal UVC bulb is to disinfect the VOC filter and kill bacteria and viruses smaller than 0.3 microns. The UV Bulbs prevents mold, mildew and microorganism growth on the VOC filter, which keeps the air within the system clean. UV light also has the ability to eliminate most bacteria and viruses that it comes in contact with.

3M HIGH AIR FLOW ELECTROSTATIC FILTER SYSTEM



3600B Filter & Bracket Kit



Filter & Bracket Latch

3M



Bracket Adhesive Mounting Strips



3600 Replacement Filter

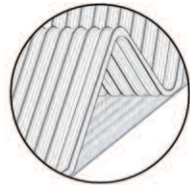


Figure 1

- Filters specially designed to protect electronics from contaminants like smoke, dust, dirt, debris and carpet fibers from the air intakes on slot machines, vending machines, arcade games, ATM's, kiosks and computers
- Ideal solution for IGT AVP and Trim Line games; due to air intake on lower left side of cabinet by power supply, dirt is sucked into power supply, then bill validator, then printer, causing problems
- 3M HAF-E filters utilize novel micro-structured features shaped in a hollow triangle pattern (figure 1) to increase filter surface area to allow high air flow rates while minimizing pressure drop across the filter. Filter effectiveness is maximized by utilization of 3M's proprietary electrostatic filter surface to attract and capture fine particulates and smoke while providing a low pressure drop
- Keeps your machines running clean and cool (filter only contributes ≤ 5 degree F increase under normal conditions)
- Filter system protects machine from most contaminants and provides for a reduction of the labor costs required for weekly and/or monthly preventative maintenance cleaning of a device interior
- Improve air quality for your games and avoid failures due to hardware overheating
- Initial low flow resistance (maximized air ventilation)
- Improve air quality for casino guest's right at the machine level
- Easy to install on outside of slot machine cabinet over existing "air intake" area using 3M VHB tape
- For maximum effectiveness, change filter every three months (depends on conditions)
- Filter change can be performed with no special tools and does not require taking the equipment out-of-service
- Durable Black plastic frame with White High Air Flow (HAF-E) Filter
- Size: 5.1" W x 10.7" L x .90" Thick

\$10.50 ea.

3600B

3M Filter System Kit

\$8.90 ea.

3600

3M Replacement Filter



WORKSPACE AND STORAGE SOLUTIONS FOR THE GAMING INDUSTRY

LISTA
making workspace work®



Durable Lista workbenches with ESD protection and custom accessories give gaming machine technicians the space they need to get slots and other profit centers back on the floor.

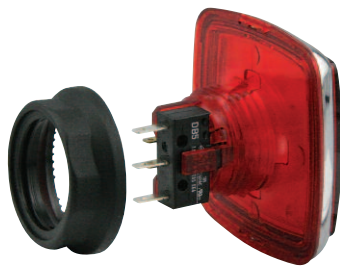
Lista also offers stationary and mobile storage cabinets that can be configured to securely hold and organize chips, cash, small tools, parts and more.



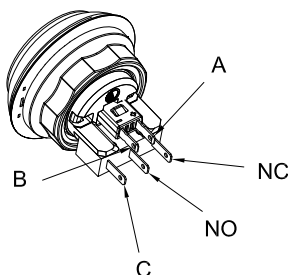
CASINO CHROME- LUMINESCENT PUSHBUTTONS



ITW Pancon Switch-Con Connector

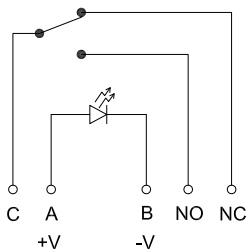


Nut over Snap-Tab Feature
(Nut Sold Separately RBM-K730-001)



*Reverse Polarity LED
Version also available
Just add an "R" at the
end of the Part Number

Pushbutton Schematic*



The Casino Chrome-Luminescent Series is the latest pushbutton from Suzo-Happ providing the following benefits:

- Polished chrome plated button bezel with translucent color washer molded in bezel to provide edge luminescent effect
- Special locking nut has special flare design to allow it to fit over "Snap-Tab" feature with microswitch installed
- Ease & flexibility of mounting to metal control panels using either the "Snap-Tab" or Traditional locking nut (Nut sold separately, RBM-K730-001)
- For mounting via "Snap-Tab method a panel thicknesses of 18GA (.047"/1.19mm), 16GA (.059"/1.15mm), 14GA (.070"/1.78mm) Chrome plated only is required
- Switch pre-assembled on button for reduction assembly time into control panel
- Supports ITW Pancon Switch-Con Crimp connector 5-pole housing (CSF-MH-05-02)
- Easy to remove high quality Cherry DB5 switch
- Subminiature microswitch provides additional clearance room under control panel
- Fitted standard with 12v white Nichia LED on printed circuit board
- Grounded for ESD protection
- Polycarbonate lens for optical clarity and durability
- Available in several color combinations of button & luminescent effect
- Additional customization also available
- Switch snaps on bezel of button eliminating the need to have separate lamp holder
- Custom printing on legends available at nominal charge
- Button Removal Tool and Nut Wrench Tool sold separately (96-0840-10)
- Patent Pending Design

CASINO CHROME- LUMINESCENT PUSHBUTTONS



Large Square



Large Rectangle



Large Round



Small Square



Small Rectangle



Small Round

Design Your Casino Chrome-Luminescent Pushbutton with the Matrix Below

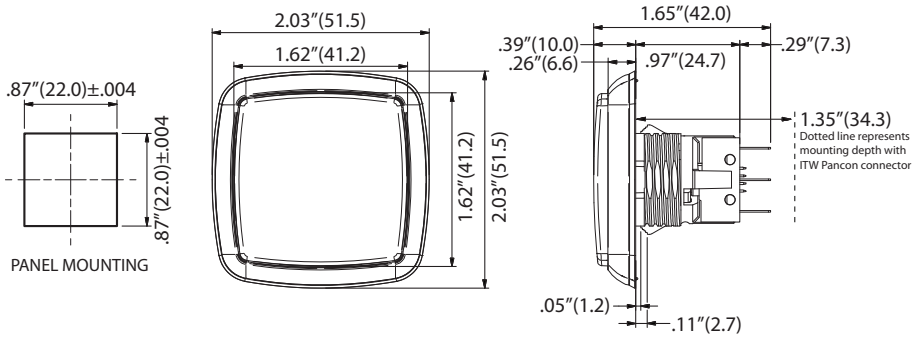
RBM-730S- S C L

Size Color Luminescent
Color, Bezel

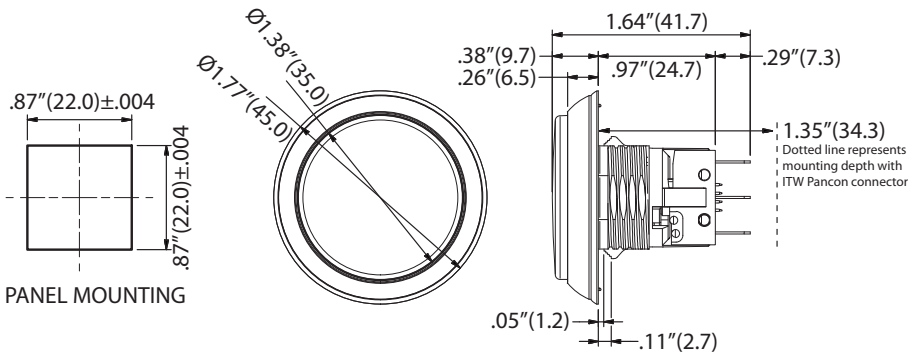
S = Size	C = Lens Color	L = Luminescent Effect
A = Large Square	2 = Red	2 = Red
B = Small Square	3 = Amber (Orange)	3 = Amber (Orange)
C = Large Rectangle	4 = Yellow	4 = Yellow
D = Small Rectangle	5 = Green	5 = Green
E = Large Round	6 = Blue	6 = Blue
F = Small Round	9 = White	9 = White
Nut Sold Separately, Part Number RBM-K730-001		

CASINO CHROME- LUMINESCENT PUSHBUTTON DIMENSIONS

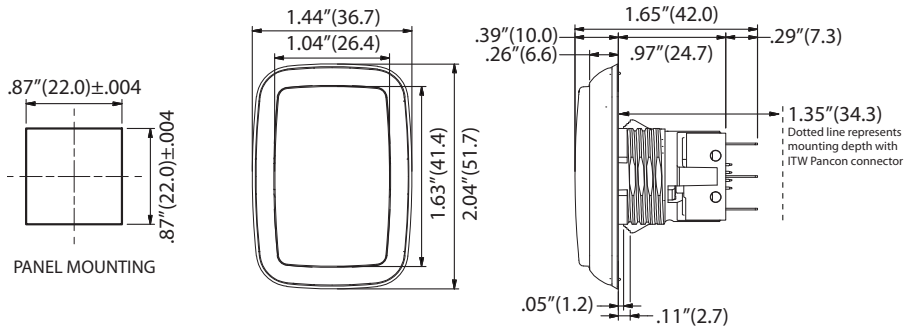
LARGE SQUARE



LARGE ROUND

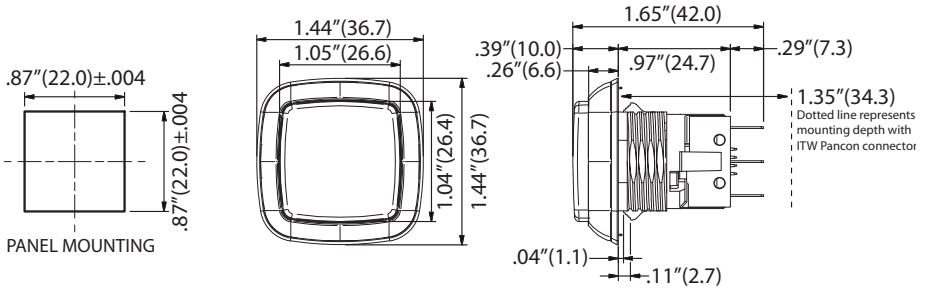


LARGE RECTANGLE

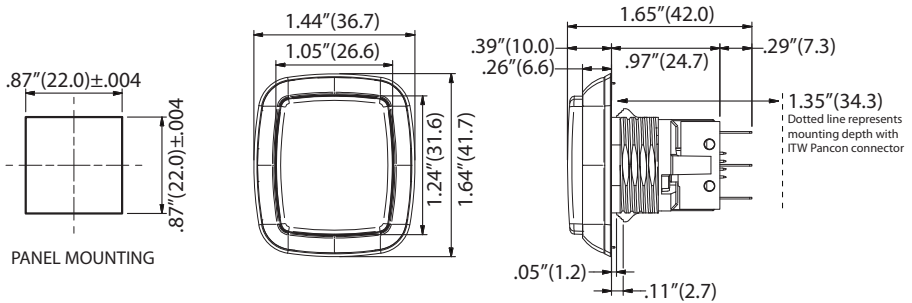


CASINO CHROME- LUMINESCENT PUSHBUTTON DIMENSIONS

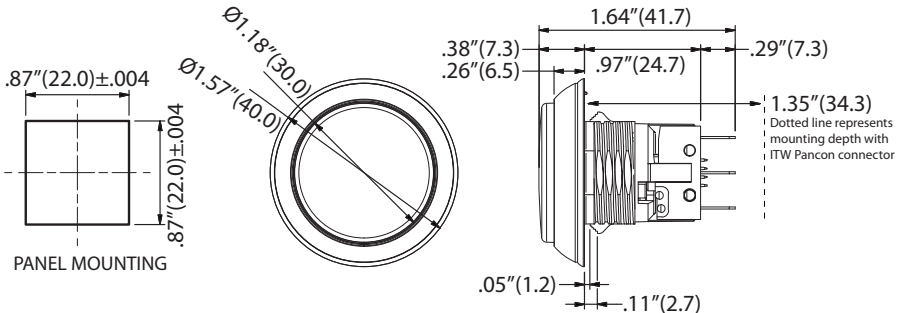
SMALL SQUARE



SMALL RECTANGLE



SMALL ROUND



REPLACEMENT BUTTON SETS

TRANSLUCENT BUTTON SET FOR IGT GAME KING



- Draw more attention with this translucent button set with clear caps for IGT Game King
- Fitted with 12V LED lamps

\$56.60 ea.

57-KIT-500

BUTTON SET FOR IGT SLANT TOP MACHINES



- Small square buttons with clear caps
- All buttons have white legends and black print
- Fitted with 12V LED lamps

\$49.60

75-L012-KIT1GG1

REPLACEMENT BUTTON SETS

BUTTON SET FOR IGT GAME KING BAR TOP MACHINES



- Rectangular and small square buttons with clear caps
- All buttons have white legends and black print except the “Change” button which has a red legend and white print
- Fitted with 12V LED lamps

\$49.70 ea.

77-KIT-402

BUTTON SET FOR IGT GAME KING UPRIGHT MACHINES



- Small square buttons with clear caps
- All buttons have white legends and black print except the “Change” button which has a red legend and white print
- Fitted with 12V LED lamps

\$46.85 ea.

77-KIT-700L

MIMO delivers the blueprint you need for complete cash room automation.

MIMO Cash Management Solution offers a revolutionary process for all your cash handling needs.

Now cashiers can obtain their own till in the beginning of their shift and deposit their own till at the end of their shift, fully enforcing cashier cash accountability. MIMO's user friendly software provides real time audit reports, simplifies POS balancing, and makes preparing bank deposits a cinch.

MIMO fully automates your cash handling operations and also eliminates the need for expensive full time employee cash counting labor and reconciliation.



- Cashiers start and end their shift in under two minutes
- Cashiers perform cash drops & loans independently
- RCM Software provides real time auditing and reporting
- Reduces cash counting errors by enforcing full employee cash accountability
- Coins are automatically dispensed directly into till tray
- Automates unnecessary cash counting labor needed to prepare tills, loans/increases, and bank deposits
- MIMO simplifies POS balancing, back office balancing, as well as bank deposits

For Additional Details, Contact:

Currency Capacities:

4 Cassettes: 2,000-2,500 Notes/Cassette
Pennies: 9,000 Coins
Nickles: 6,000 Coins
Dimes: 12,000 Coins
Quarters: 5,000 Coins

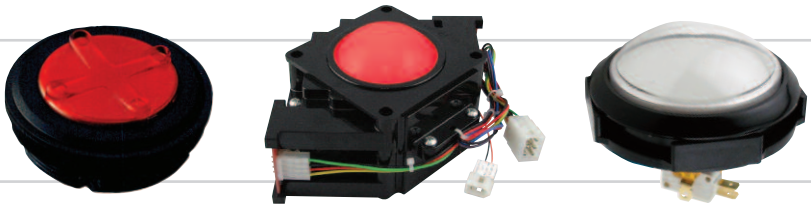
MIMO, LLC

Pat Johnson, CEO
pjohnson@mimo-llc.com
Office: 708-246-4146
Mobile: 708-227-0082

Taking Your Game Input Devices from Concept to Reality

SUZO HAPP Interactive Gaming Devices

The Leader of Ruggedized Input Devices for the Amusement Industry



*Providing standard **ruggedized** input devices, **customized** devices, and developing **unique** input devices to create **interactive** play on your Gaming Machine.*



FLIP CARD UNIT



Small Unit

Large Unit



Large Unit in Motion

A new and innovative mechanical game device!

- Enhances the content and player appeal of new games
- Available in two sizes for design flexibility
- Provides a full deck of cards including face cards and jokers
- Driven by standard 12V, 24 step NMB stepper motors
- Three motor steps per card
- Designed to include movement detection
- Separate mounting cradle for ease of machine assembly and service
- Units can be stacked together or mounted individually
- Cards are illuminated with RGB LEDs
- Cards can be driven by the host or through the Suzo-Happ driver board
- Developer's Kit available to aid in integration design



Open Unit

Design Your Flip Card Unit with the Matrix Below

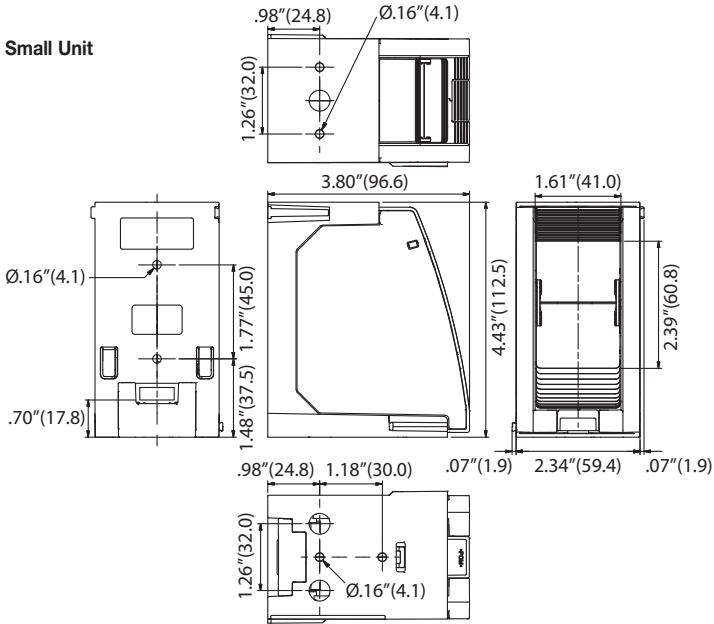
RBM-694 **S** - **C**

Size Card Print

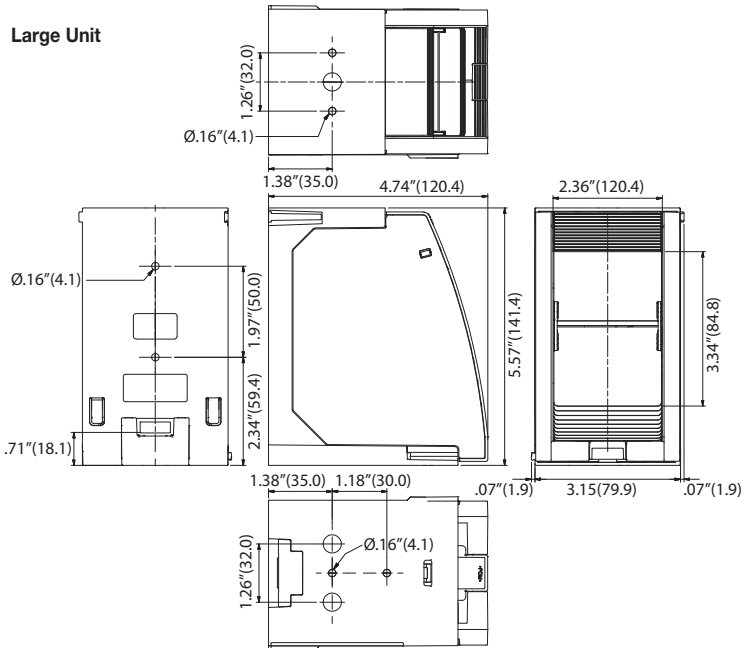
S = Size	C = Card Print
A = Small Unit	0 = Playing Cards
B = Large Unit	1 = Alpha/Numeric
	2 = Custom

FLIP CARD UNIT DIMENSIONS

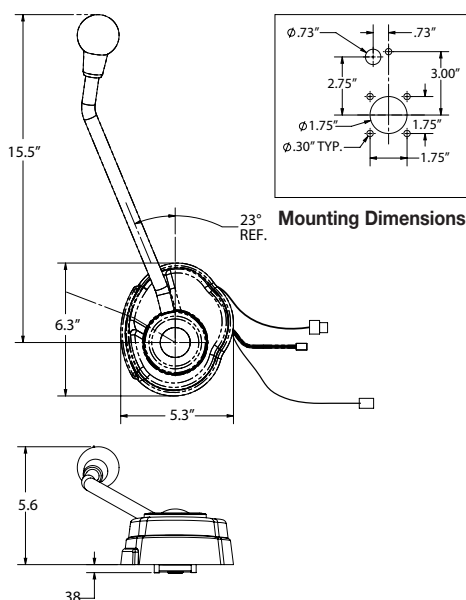
Small Unit



Large Unit



COMPACT RGB HANDLE MECHANISM



The Compact RGB Handle Mechanism is the latest Handle Mechanism from Suzo-Happ providing the following benefits:

- Ultra Low-Profile design allows for external mounting on cabinet and provides increased space on the inside of the cabinet
- Ships as one assembly with handle for easy "Bolt-On" installation
- Easily to remove for improved serviceability
- Ruggedized die cast design to provide long term performance
- RGB Attract Mode on handle mech. cover attracts additional attention
- As Handle is pulled LEDs light up with each of the six clicks of the handle movement. All LEDs light up when handle is fully pulled
- Pre-Programmed with unique flashing patterns and color combinations
- RGB Illuminated Mechanism ball with 2 multi color LED's that flash, glow or flash light patterns to further trigger your interest in your handle machines
- Durable ABS plastic cover
- 45 Degree rotation
- Available with Switches or Optics
- 12VDC LEDs & Coil
- Patent Pending Design

Part Number	Description	Price per ea.
96-1164-00	Compact RGB Handle Mechanism with RGB Ball & RGB Effect Hub	\$160.00
RBM-729-F	Compact RGB Handle Mechanism with RGB Ball & Std Black Hub	\$145.00
RBM-729-A1	Compact RGB Handle Mechanism with Black Ball & RGB Effect Hub	\$112.50
RBM-729-A	Compact Handle Mechanism with Black Ball & Std Black Hub	\$115.00
RBM-729-1	Compact RGB Handle Mechanism with No Handle & RGB Effect Hub	\$115.00
RBM-729	Compact Handle Mechanism with No Handle & Std Black Hub	\$87.50

SUZO HAPP

Starpoint
Dice Unit

Custom Reel Mechanisms

Custom Engineered Reel Mechanisms to Fit the Needs of Our Customers

IGT

STARPOINT

KONAMI

STARPOINT

Bally

Bally

Contact a Suzo-Happ Sales Representative to see how we can work with you to develop a product solution for your gaming machine.

FLOW HOPPER



Large Cup



Medium Cup

New and innovative through hole hopper!

- Perfect for many applications including Amusement, Vending, Gaming, Parking and Change machines
- Constructed of extremely durable, wear-resistant plastic along with state-of-the-art electronics
- Available in two interfaces – standard parallel interface or ccTalk serial interface
- Supplied with quick-fit release plate

Features

- Compatible with other popular hopper devices
- Payout speed of up to 7 coins per second
- Three different bowl sizes available – small, medium and large
- Reliable through hole coin disk design
- Clean design – no external wires run for level sensors
- Integrated fall tube for simple dual hopper cabinet construction
- ccTalk version is available in encrypted and non-encrypted modes
- Parallel interface and standard 10-pin connector
- 12-24V power supply
- Continuous opto-sensor check
- Low level sensor and anti-jam feature



Design Your Flow Hopper with the Matrix Below

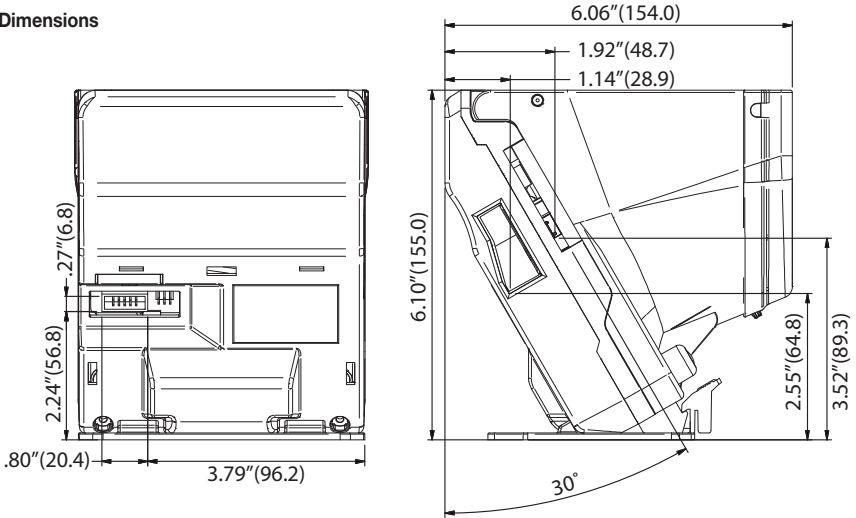
RBM-712 **I** - **DC**

Interface Coin Cup Size
 Payout

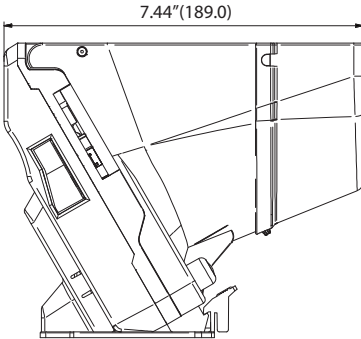
Key on Following Page >

FLOW HOPPER DIMENSIONS

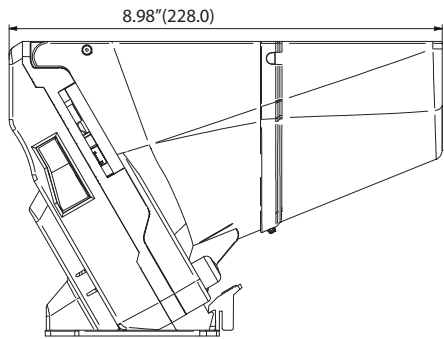
Dimensions



Medium Cup



Large Cup



I = Interface

A = Parallel
B = CC-Talk/Non-Encrypted
D = CC-Talk/Encrypted

D = Coin Payout Disc

0 = 16-19mm DIA. / 1.6mm THICKNESS
1 = 16-19mm DIA. / 2.1mm THICKNESS
2 = 16-19mm DIA. / 3.2mm THICKNESS
3 = 19-22mm DIA. / 2.1mm THICKNESS
4 = 19-22mm DIA. / 3.2mm THICKNESS
5 = 22-28mm DIA. / 2.1mm THICKNESS
6 = 22-28mm DIA. / 3.2mm THICKNESS
7 = 28-32mm DIA. / 2.1mm THICKNESS
8 = 28-32mm DIA. / 3.2mm THICKNESS

C = Cup Size

S = Standard Cup (154mm)
M = Medium Cup (189mm)
L = Large Cup (228mm)

mei EASITRAX®

MEI EASITRAX Soft Count is a hardware and software solution that acts as an interface between the casino floor and the soft count validator. Information collected in the bill validator is now easily accessible in a database that can be networked to multiple locations and be accessed to analyze slot performance.

MEI EASITRAX Soft Count is a faster and more efficient way to manage cash drops and evaluate data from slot machines.

RFID technology connects slot machine asset numbers to a specific cashbox. Casino operators can streamline the cash management process through:

- Easily retrofitting all existing MEI CASHFLOW SC systems with easy-to-install upgrade kits
- Integrating existing counter/sorter equipment to maximize efficiencies by minimizing system components
- Tracking the scheduled drops of all cashboxes providing a fast, efficient source to validate revenue and ensuring a more accurate collection process

EASITRAX Soft Count provides cost savings by:

- Eliminating the cost associated with searching for “hotboxes”
- Improving efficiencies within the drop process
- Avoiding jurisdictional fines due to out of date software
- Increasing labor efficiency in the soft count room
- Providing tools to maximize the casino layout
- Reducing the number of cashboxes because they no longer need to be dedicated.



Antenna Board



Reader Base

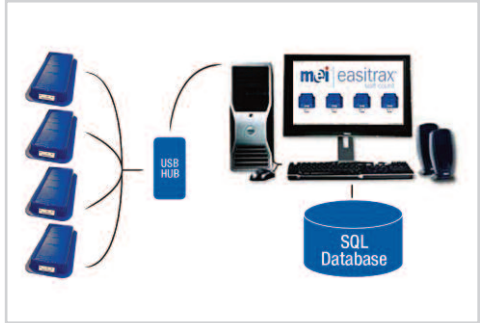


RFID Enabled Cashbox

MEI EASITRAX® SOFT COUNT UPGRADE KITS

The EASITRAX Soft Count system has been designed to be easily retrofitted to the CASHFLOW SC bill validator. Building a comprehensive cash management solution is as simple as applying these basic components:

- Placing an antenna board to the CASHFLOW SC interface board
- Applying RFID tags into the cashbox to allow information to be transmitted
- Tying EASITRAX reader bases (up to four) into a soft count room system that includes a USB hub and a computer
- Installing software that creates a SQL database and loads available reports



mei

How It Works

Features

- Streamlined engineering
- Back room interface uses existing process / counting systems
- SQL database record storage
- Information accessibility
- Automated connection between slot and cashbox
- “Hot box” detection
- Validate drop
- Incremental accounting system
- Easily retrofits to all existing MEI CASHFLOW SC systems; no batteries or wires

Advantages

- Integrates with existing equipment
- Data repository for individual workstations or network
- Track performance, acceptance rate and note acceptor software revisions by machine
- Use of RFID eliminates writing and wandering
- Note acceptor will not enable live cashbox
- Automatically verify all boxes were collected and detect unexpected boxes
- Fast access to game revenue data; quickly resolve count variances

Benefits

- Easy and efficient installation
- Flexibility to use any soft count equipment
- Database mining to analyze and improve operations
- Maximize operational efficiency and profitability
- Reduced drop team labor and increased accuracy
- Eliminate time and cost associated with “hot box” search
- Reduce variances and quickly locate errors by asset number
- Additional source for revenue validation

Part Number	Description	Price per ea.
42-1541-00	MEI EASITRAX Upgrade Kit Includes: 10 Antenna Boards, 10 RFID Tags, 10 Standoffs, 10 Labels, 10 FCC ID Labels, 10 Alcohol Wipes, 30 Standoffs, 60 Plastic Screws and 10 Ferrites	\$1,287.50
62549890P10	MEI EASITRAX RFID Tag Kit Includes: 10 RFID Tags and 10 Labels	\$108.15
252066165	MEI EASITRAX Soft Count Kit Includes: 2 Software CDs and 2 Reader Bases	\$6,213.00
50086190P12	MEI EASITRAX Spare Cashbox Kit Includes: 12 Cashboxes, 12 RFID Tags and 12 Labels	\$1,375.50
252060141	MEI EASITRAX Reader Base	\$2,054.85



The New Standard For Gaming Note Acceptors

Bill Acceptor/Handling

- Superior acceptance and security
- Fast, reliable bill handling
- Lower cost of ownership – less downtime and maintenance
- Traffic light LEDs provide front-line at machine diagnostics
- USB port on the front, allows convenient interface for support tools
- Common acceptor module, regardless of the machine manufacturer
- Lensed receivers that scan 300% more bill surface with six wavelengths of light
- Highest ticket acceptance rates through custom bar-code sensor output
- 14 pending patents cover 30 unique design features in the unit

Cashbox

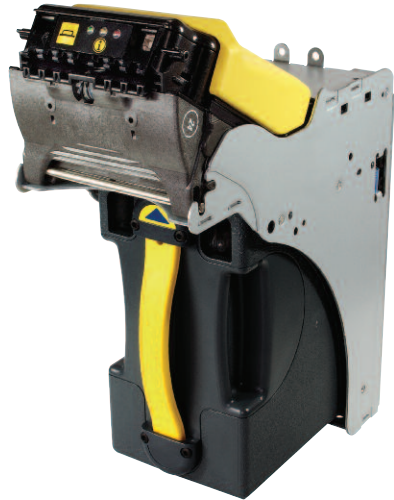
- Industry's first dispute resolution window (to view last bill stacked)
- Curved surface to protect internal mechanisms, drive gears and secure cash
- Durable, welded plastic design
- One-hand, ergonomic handle for ease of use
- No latches or levers to operate

Acceptance Rate

- 98% or greater

Bill / Barcode Coupon Insertion

- Bills – up to 50 notes, four ways, face up & down
- Barcode Coupons – two way face up



Transaction Speed

- Approximately 3 seconds to stack

Escrow

- One bill or one barcode coupon

Interfaces

- Multiple serial protocols

Power Source & Consumption

- 12V – 28VDC
- Standby: 10 Watts
- Accepting: 30 Watts
- Stacking: 70 Watts

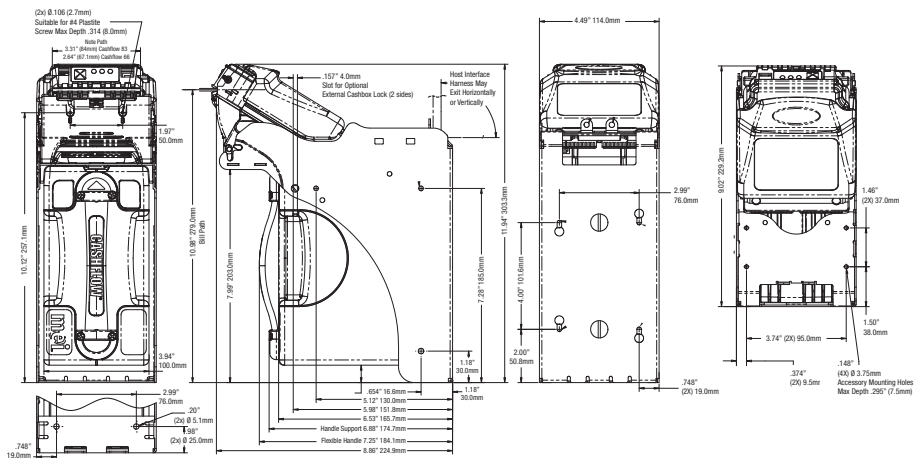
Shipping Weight

- SC Series - 9lbs. (4kg)
- SC Cashbox - 3lbs. (1.5kg)

SC Series Cashbox Capacity

- Greater than 500 notes

MEI CASHFLOW® SC SERIES BILL VALIDATOR



Part Number	Model	Width	Currency	Manufacturer	Price per ea.
62542590	SC6602	Fixed	U.S.	IGT	\$913.35
62545190	SC8302	Multi	Various	IGT	\$951.75
252005016	SC6604	Fixed	U.S.	Atronic, Bally (2005 & Older), Spielo	\$844.60
252001030	SC8304	Multi	Various	Atronic, Bally (2005 & Older), Spielo	\$824.00
252004020	SC6607	Fixed	U.S.	Aristocrat, Bally (2006 & Up), Konami, VGT, WMS	\$844.60
252009031P1	SC8307	Multi	Various	Aristocrat, Bally (2006 & Up), Konami, VGT, WMS	\$824.00
252009053P1	SC6604	Fixed	U.S.	Atronic, Bally (2005 & Older), Spielo, Easitrax Ready	\$916.70
252003056P1	SC6607	Fixed	U.S.	Aristocrat, Bally (2006 & Up), Konami, VGT, WMS Easitrax Ready	\$916.70

FUTURELOGIC GEN3 EVOLUTION® PRINTER

Designed to keep pace with current — and future — demands of server-based gaming, promotional couponing and the continually evolving TITO market, the GEN3 Evolution® printer offers features and benefits superior to any gaming printer available today, including:

Optional On-Board Promotional System Module

Unique processing architecture creates a separate and secure environment for printing tickets and coupons

Direct System Connection over TCP/IP

System connections are easy and reliable over an Ethernet interface

Photographic-quality printing

The only Advanced Graphics Printing (AGP) technology in gaming offering the highest quality, eye-catching promotional coupons

More than double the ticket capacity

With room for 450 tickets in less than 3 inches of vertical space (the standard height of all TITO printers), the GEN3 Evolution printer can save operators over 30 refills or \$300 per year per game

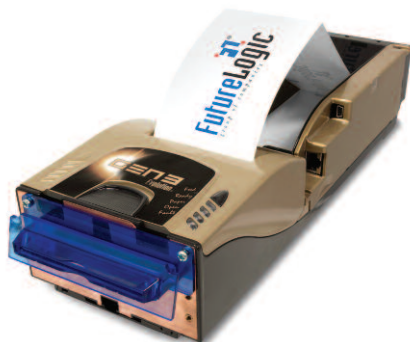
Fastest printer in gaming

The printer's unmatched print speed of 8 inches per second prints a ticket in under a second

Largest Memory Storage Capacity

An expansion card provides 32 GB for additional fonts, promotional databases, clip art and logos

The GEN3 Evolution printer's TITO game ports include USB 2.0 (GSA, GDS, SPC/IGT, SBG), RS-232 and NetPlex. Promotional ports include Ethernet, USB 2.0 and RS-232. To further facilitate couponing, the printer features a programmable bursting scheme that can be used to burst single or multiple joined vouchers or coupons directly into the players' hands.



GEN3®
EVOLUTION

Features

Designed for Couponing

Unique Processing Architecture Creates a Separate and Secure Environment for Printing Tickets and Coupons

Universal TITO Ports (USB 2.0, RS232, and NetPlex)

Flexible Promotional Ports (Ethernet, USB 2.0, RS232)

Direct System Connection

Easy and Reliable System Connections are Made Over an Ethernet Interface (TCP/IP)

True Grayscale Printing

Advanced Temperature Control Yields Highest Resolution Output

A Perfect Ticket Every Time!

Intelligent Ticket Handling (ITH)® Technology Makes Ticket Available ONLY after Fully Printed Internally & Automatically Burst

Larger Paper Capacity

450 Standard Ticket Capacity Saves \$300/Printer Annually

Reduced Paper Jams

IntelligentBezel™ System Reduces Paper Jams via Blocked Bezel Detection

Fastest Gaming Printer

At 8IPS, Tickets Are Printed and Presented in Less Than ONE Second



FUTURELOGIC GEN3 EVOLUTION® PRINTER



Technical Specifications

General

Dimensions: (W x D x H):
110mm x 304.8mm x 64.3mm

Weight: 2.7 lbs.

Power Requirements: 24Vdc @ 2.7A

Sensors: Paper Low, Paper Out, Printer
Drawer Open, Ticket Taken, Ticket Jam,
Ticket in Chute, Black Mark (Includes a
Host Controllable Buzzer)

Printing Speed: 203mm/Second
(8"/Second)

Print and Present: 2.2 Seconds

Printing Width: 62mm (true near-edge
printing)

Storage: 450 Tickets

Ticket Tray Extenders: Interchangeable,
900 Ticket Tray

Resolution: 8 dots/mm (203 dpi)

Firmware: Application in Memory is
Reprogrammable (via Flash BIOS)

Self Test: Yes

Page Mode: Full Page Mode Printing
(Simultaneous 4 Orientation Printing: 0°,
90°, 180°, 270°), Line and Box Draw
Printer Resident, Bitmap Graphics,
Printer Resident (Stored in Flash)
Graphics

Paper Loading: Manual

Paper Feed: Automatic

Media: Direct Thermal, Top Coated,
Fanfolded, and Perforated

Paper Specification: 66mm W x 156mm
L, 4.5 mil, 1 Color/2 Colors

Bezel Control: Two High Current Ticket
Printing Bezel Control Ports

User Interface: 4 LED Indicators, Paper
Advance Button

Upgrade Port: Allows for Printer
Upgrades via USB Download Port or
RS232C Main Port

Hot Swapable: 100%

Printing Resources

Template Capacity: 8Mb; Stores
hundreds of clip art objects &
thousands of graphic templates

Graphic Storage: 6Mb

Color Printing: Red on Black and Blue
on Black are available. Other colors can
be supported as the print media
becomes available. Color selection is
controlled through the TCL™ language.

Characteristics

Printer Languages: TCL Printer
Language (Page Description Language)
Subset of ESCP2

Fonts: 8 (2.5 cpi, 3.3 cpi, 4.0 cpi, 5.5
cpi, 5.6 cpi, 7.3 cpi, 10.1 cpi, 20.5 cpi)

Font Scalability: May Be Independently
Scaled from 1x – 7x in both Height and
Width

Bar Codes: PDF-417, Interleaved 2 of 5,
Code 39, UPC-A, UPC-E, UPC-E+2,
UPC-E+5, Codabar, EAN-13, EAN-8,
Code 128, MSI

Memory: 2MB with 512K RAM

Interface

Communications: USB 2.0 game interface
(full speed of 12Mbps) with separate
USB Download Port, Future GSA
Compliant, Compliant with GSA GDS,
IGT USB and traditional communication
protocols RS232C and Netplex

Environmental

Operating Temperature: 5°C to 50°C

Storage Temperature: -20°C to 75°C

Operating Humidity: 5 to 85% RH non-
condensing

Reliability

Maintenance: Annual Print Head
Cleaning Required

Print Head Life: 100km Min (656,000
Tickets Based on US Currency Size)

Certifications: ISO 9001, CE Certified,
RoHS, UL

FUTURELOGIC GEN2 UNIVERSAL™ PRINTER

The GEN2 Universal™ family of printers builds on the technology that has made FutureLogic the leading manufacturer of TITO ticket printers for cashless gaming. Developed with design feedback from global gaming OEMs and casinos, the GEN2 Universal printers are compatible with existing gaming platforms (RS232 and NetPlex) as well as the next generation of downloadable, server based and USB games.

The GEN2 Universal printers anticipate new GSA standards for downloadable games, are IGT compliant and permit in-game firmware updates via the USB communications port. In addition to the interoperability and ease of integration required for the next generation of electronic games, the GEN2 Universal printers offer compatibility with existing games on your floor, allowing you to specify a single printer for your entire property. And when combined with a proven track record of reliability, over one million (1,400,000) FutureLogic printers are helping operators maximize playtime and reduce operational costs worldwide.



Features

Universal Communications

- 3 Ports to Support All Games
- USB 2.0 Full Speed (Future GSA Compliant, IGT Compliant)
- RS232 Port (Backward Compatible)
- NetPlex Port (Backward Compatible)

ITH® (Intelligent Ticket Handling)

Makes Ticket Available ONLY after Fully Printed Internally & Automatically Burst

Large Paper Capacity

50% More Standard Ticket Capacity
Saves \$200/Printer Annually

IntelligentBezel™ System

Paper Jam Reduction via Blocked Bezel Detection

Award-Winning Printer

Most Decorated Printer in Gaming

Superior Electro-Mechanical Design

High Reliability and Easy Maintenance

ProColor™ Printing

Readily Available 2-Color Printing Technology

Expanded Graphics Memory

Stores Hundreds of Clip Art Objects and Thousands of Graphic Templates

Hot Swappable

Printer Removal Without Powering Down

Technical Specifications

General

Dimensions (W x D x H):
110mm x 304.8mm x 64.3mm

Weight: 2.7 lbs

Power Requirements: 24Vdc @ 2.7A

Sensors: Paper Low, Paper Out, Printer Drawer Open, Ticket Taken, Ticket Jam, Ticket in Chute, Black Mark (Includes a Host Controllable Buzzer)

Printing Speed: 90mm/Second
(3.5"/Second)

Print and Present: 2.2 Seconds

Printing Width: 62mm
(True near-edge printing)

Storage: 300 Tickets

Ticket Tray Extenders: Interchangeable,
600, 900 Ticket Tray

FUTURELOGIC GEN2 UNIVERSAL™ PRINTER



Resolution: 8 dots/mm (203 dpi)

Firmware: Application in Memory is
Reprogrammable (via Flash BIOS)

Self Test: Yes

Page Mode: Full Page Mode Printing
(Simultaneous 4 Orientation Printing: 0°, 90°, 180°, 270°), Line and Box Draw
Printer Resident, Bitmap Graphics,
Printer Resident (Stored in Flash)
Graphics

Paper Loading: Manual

Paper Feed: Automatic

Media: Direct Thermal, Top Coated,
Fanfolded and Perforated

Paper Specification: 66mm W x 156mm
L, 4.5 mil, 1 Color/2 Colors

Bezel Control: Two High Current Ticket
Printing Bezel Control Ports

User Interface: 4 LED Indicators, Paper
Advance Button

Upgrade Port: Allows for Printer
Upgrades via USB Download Port or
RS232C Main port

Hot Swappable: 100%

Printing Resources

Template Capacity: 8Mb; Stores
hundreds of clip art objects &
thousands of graphic templates

Graphic Storage: 6Mb

Color Printing: Red on Black and Blue
on Black are available. Other colors can
be supported as the print media
becomes available. Color selection is
controlled through the TCL™ language.

Characteristics

Printer Languages: TCL Printer
Language (Page Description Language)
Subset of ESCP2

Fonts: 8 (2.5 cpi, 3.3 cpi, 4.0 cpi, 5.5
cpi, 5.6 cpi, 7.3 cpi, 10.1 cpi, 20.5 cpi)

Font Scalability: May Be Independently
Scaled from 1x – 7x in both Height and
Width

Bar Codes: PDF-417, Interleaved 2 of 5,
Code 39, UPC-A, UPC-E, UPC-E+2,
UPC-E+5, Codabar, EAN-13, EAN-8,
Code 128, MSI

Memory: 2MB with 512K RAM

Interface

Communications: USB 2.0 game
interface (full speed of 12Mbps) with
separate USB Download Port, Future
GSA Compliant, Compliant with GSA
GDS, IGT USB and traditional
communication protocols RS232C and
Netplex

Environmental

Operating Temperature: 5°C to 50°C

Storage Temperature: -20°C to 75°C

Operating Humidity: 5 to 85% RH non-
condensing

Reliability

Maintenance: Annual Print Head
Cleaning Required

Print Head Life: 100km Minimum
(656,000 Tickets Based on US Currency
Size)

Certifications: ISO 9001, CE Certified,
RoHS, UL



220-00086-300

The GEN2™ printer, the second generation TITO printer by FutureLogic, builds on the exceptional success of the industry's first and most copied cashless ticket printer, the PSA-66-ST. While maintaining the robustness and reliability of its predecessor, as the most decorated printer in gaming, the GEN2 printer offers improvements such as ITH® (Intelligent Ticket Handling) technology, IntelligentBezel™ system, ProColor™ printing, and more.

The ITH technology sets the printer apart from competing TITO printers by making the "cashout ticket" available ONLY after the ticket is fully printed internally and automatically burst. To improve the printer's reliability further, the IntelligentBezel feature detects for obstruction near the bezel and reduces paper jams, by waiting for a clear path before a ticket is ejected.

In addition to the game port (RS232 or NetPlex), a separate port is provided for convenient firmware upgrades without the need to remove the printer from the slot machine.

Features

ITH® (Intelligent Ticket Handling)

Makes Ticket Available ONLY after Fully Printed Internally & Automatically Burst

Large Paper Capacity

50% More Capacity Saves \$200/Printer Annually

IntelligentBezel™ System

Paper Jam Reduction via Blocked Bezel Detection

Award-Winning Printer

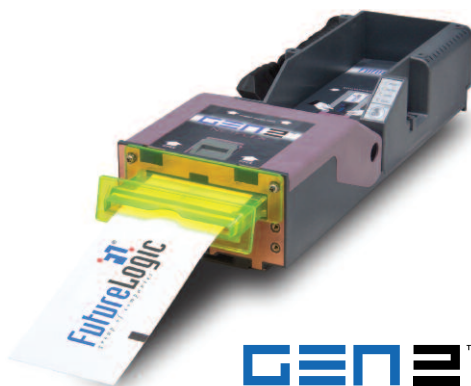
Most Decorated Printer in Gaming

Superior Electro-Mechanical Design

High Reliability and Easy Maintenance

ProColor™ Printing

Readily Available 2-Color Printing Technology



Expanded Graphics Memory

Stores Hundreds of Clip Art Objects and Thousands of Graphic Templates

Hot Swappable

Printer Removal Without Powering Down

Technical Specifications

General

Dimensions: (W x D x H):
110mm x 304.8mm x 64.3mm
Weight: 2.7 lbs.

Power Requirements: 24Vdc @ 2.7A

Sensors: Paper Low, Paper Out, Printer Drawer Open, Ticket Taken, Ticket Jam, Ticket in Chute, Black Mark (Includes a Host Controllable Buzzer)

Printing Speed: 90mm/Second
(3.5"/Second)

Print and Present: 2.2 Seconds

Printing Width: 62mm (true near-edge printing)

Storage: 300 Tickets

Ticket Tray Extenders: Interchangeable,
600, 900 Ticket Tray

Resolution: 8 dots/mm (203 dpi)

Firmware: Application in Memory is Reprogrammable (via Flash BIOS)

Self Test: Yes

FUTURELOGIC GEN2™ PRINTER



Page Mode: Full Page Mode Printing
(Simultaneous 4 Orientation Printing: 0°, 90°, 180°, 270°) Line and Box Draw
Printer Resident Bitmap Graphics
Printer Resident (Stored in Flash) Graphics

Paper Loading: Manual

Paper Feed: Automatic

Media: Direct Thermal, Top Coated, Fanfolded and Perforated

Paper Specification: 66mm W x 156mm L, 4.5 mil, 1 Color/2 Colors

Bezel Control: Two High Current Ticket Printing Bezel Control

User Interface: 4 LED Indicators, Paper Advance Button

Upgrade Port: Allows for Printer Upgrades via Main Interface or RS232 Side Port

Hot Swappable: 100%

Printing Resources

Template Capacity: 8Mb; Stores hundreds of clip art objects & thousands of graphic templates
Graphic Storage: 6Mb

Colors: Red on Black and Blue on Black are available. Other colors can be supported as the print media becomes available. Color selection is controlled through the TCL™ language.

Characteristics

Printer Languages: TCL Printer Language (Page Description Language) Subset of ESCP2

Fonts: 4 (5.5 cpi, 7.5 cpi, 10 cpi, 20 cpi)

Font Scalability: May Be Independently Scaled from 1x – 7x in Both Height and Width

Bar codes: Interleaved 2 of 5, Code 39, UPC-A, UPC-E, UPC-E+2, UPC-E+5, Codabar, EAN-13, EAN-8, Code 128, MSI

Memory: 1MB with 128K RAM

Interface

Communications: Bi-directional RS232C, Full Handshaking Set Netplex

Environmental

Operating Temperature: 5°C to 50°C

Storage Temperature: -20°C to 75°C

Operating Humidity: 5 to 85% RH non-condensing

Reliability

Maintenance: Annual Print Head Cleaning Required

Print Head Life: 50km Minimum (320,000 Tickets Based on US Currency Size)

Certifications: ISO 9001, CE Certified, RoHS, UL



\$739.05 ea.

220-00036-300

FutureLogic GEN2 RS232 Printer,
12-Pin

\$739.05 ea.

220-00037-300

FutureLogic GEN2 RS232 Printer,
14-Pin

**96-9912-05****96-9913-05**

- For CDS Oasis player tracking system card reader
- Bright yellow bezel enhances player experience
- Makes card reader stand out and easy to find
- Designed specifically for Uniform Industrial and Neuron card readers
- Installs easily using screws on current bezel

\$4.15 ea.**96-9912-0****For Uniform Industrial Card Readers****\$4.15 ea.****96-9913-05****For Neuron Card Readers**

SUZO-HAPP carries more LCD monitors **IN STOCK**
than all of our competitors combined

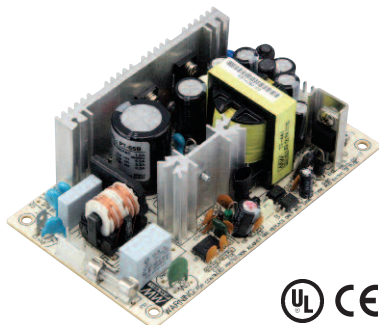


REPLACEMENT POWER SUPPLY BOARD FOR BALLY SLOTS

- For Bally Pro Series slots V7000 & V7200 & 5000
- Just replace the board and save \$\$
- 63.5 watts, 5.5 amps
- UL, CE, CSA Approved

\$37.05 ea.

80-1178-00

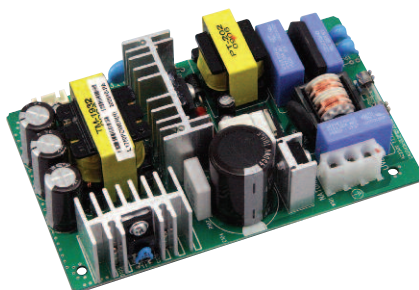


POWER SUPPLY FOR 19" TOVIS LCD

- Internal power supply L1932GTAIP

\$43.52 ea.

LTG-1750



POWER SUPPLY FOR MIKOHN SIGNS

- 320W single output with PFC function
- Universal AC input / Full range
- Built-In active PFC function, PF>0.95
- Protections: Short circuit/Overload/Over voltage/Over temperature
- Forced air cooling by built-in DC fan with built-in speed control
- Fixed switching frequency at 100KHz
- 3 year warranty

\$128.75 ea.

80-1301-00



POWER SUPPLIES

POWER PRO 200W UL POWER SUPPLY

- +5v 20A, +12v 8A, -5v 0.5A, -12v 0.5A
- UL Recognized
- 200 watts of power
- Dual AC Input 115vac/230vac, selectable by jumper
- 1 year warranty

\$84.90 ea.
80-1152-00

Power Pro



350W POWER SUPPLY FOR AINSWORTH

- Ainsworth Ref. No. 22027A
- Total power: 350 watts max, +3.3v & +5v, 135 watts max, 3.3v, +5v & +12v, 210 watts max
- 100-240 VAC 50-60Hz 1A

\$173.10 ea.
80-1276-00



400W 24V POWER SUPPLY

- +3.3v 24A, +5v 24A, +12v 20A, +24V 9A, -12V .05A, +5Vsb 2.5A
- UL and CE recognized
- Works in the following Cadillac Jack machines:
 - Multi-line 3 Reel Video
 - Multi-line 5 Reel Video
 - 50 Line Video
 - U-Pick-Em-Bingo
 - Wide Area Progressives
- Will also work for Atronic E-Motion machines

\$129.75 ea.
80-0704-00



REPLACEMENT POWER SUPPLY FOR WMS BLUEBIRD

- For use in WMS Bluebird slot machines
- UL recognized, TUV and CE approved
- 1-Year warranty

AC Input: 115V ~ 10A
230V ~ 5A

Frequency: 50 - 60Hz

DC Output: +5V / 15A (red)
+12V / 13A (yellow)
+3.3V / 8A (orange)
+15V / 6A (blue)
+5Vsb / 1A (white)

Output Max: 300W



\$92.65 ea.

80-0459-20

REPLACEMENT CAPACITORS FOR IGT POWER SUPPLIES

- Complete set of replacement capacitors
- Kits contain high quality 105 degree capacitors
- Not a repair kit as your power supply may have defects other than capacitors
- All capacitors should be replaced because age, humidity and temperature cause the value of electrolytic capacitors to change

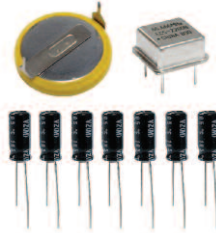


Part Number	IGT Ref. No.	Manufacturer	# of Capacitors	Price per ea.
70-25652-00	40009003	Win-Tact	27	\$18.55
70-25879-00	40009001	Condor	12	\$10.30
70-26107-00	40012100W	3Y Power	10	\$10.30

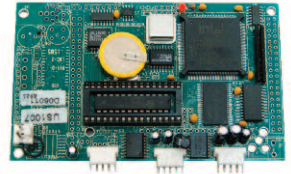
REPLACEMENT PARTS

ARISTOCRAT SP2 BOARD REPAIR KIT

- Includes:
 - 1 ECS-2200 oscillator / crystal
 - 1 Cr2032 battery
 - 7 radial capacitors 25v 10mf 105 degree 5mm x 7mm
- All the most commonly replaced parts on the Aristocrat SPC2 board in one package



64-3656-00



SPC2 Board (Not Included)

\$8.45 ea.
64-3656-00

VIDEO GRAPHICS CARD FOR BALLY ALPHA MACHINES

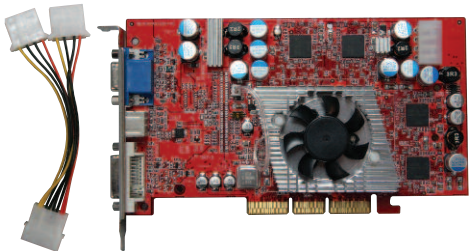
- Video-228PCI-Twin
- High performance and high quality 3D acceleration
- MPEG video playback support
- High performance 2D acceleration
- 128MB DDR memory module
- Based on nVIDIA GeForceFX 5200 core technology



\$109.00 ea.
49-0103-00

ATI RADEON 9800 PRO 128MB GRAPHICS CARD FOR IGT

- RADEON 9800 Series of visual processors is the most visually advanced 3-D performer on the planet, delivering an immersive, cinematic experience for the most demanding next-generation games
- ATI Catalyst Software Included

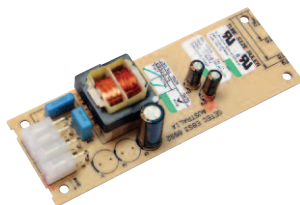


\$169.00 ea.
75606290

BALLASTS & REPAIR KITS



70-0635-00-R



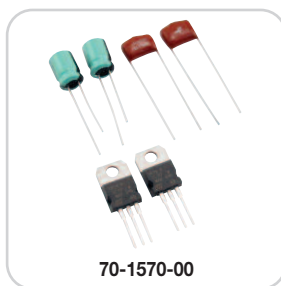
70-1757-00



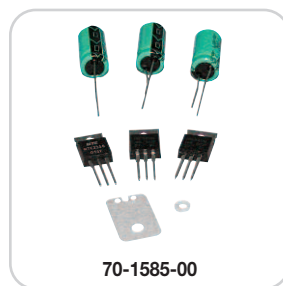
70-1671-00



70-1337-00



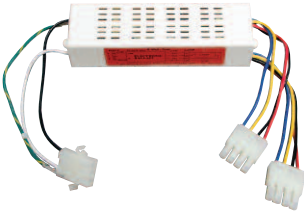
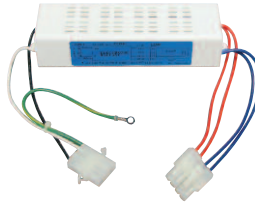
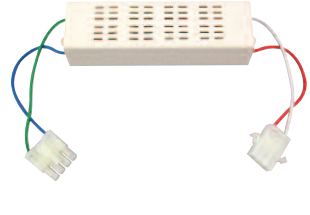
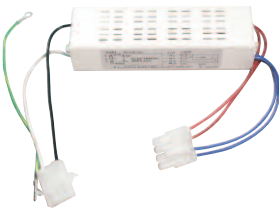
70-1570-00



70-1585-00

Part Number	Description	Ref. No.		Price per ea.
IGT BALLAST and REPAIR KITS				
70-0635-00-R	15 Watt Electronic Ballast	195-076-90	For F-15 lamps	\$16.45
70-1337-00	15 Watt Rebuild Kit	For 70-0635-00-R	Component Parts Rebuild Kit	\$4.35
70-0824-00	8 Watt Electronic Ballast	195-069-90	For F-4 and Other Small Lamps	\$22.10
70-1570-00	8 Watt Rebuild Kit	70-0824-00	Component Parts Rebuild Kit	\$4.35
70-1151-00-R	22-40 Watt Black Ballast	1950-7800	For 8" and 12" Circular Lamps	\$33.95
91-0991-00	22 Watt Thin-Lite Ballast	-	For Top Box Round Circuline Bulb	\$82.35
ARISTOCRAT BALLAST and REPAIR KITS				
70-1757-00	6 Watt Ballast	008056 Replaces 006999	Setec EBS3-6-T5 Replaces EBS2-6-T5	\$51.45
70-1761-00	6 Watt Rebuild Kit	70-1757-00	008056 Replaces 006999	\$10.25
432315	15 Watt Ballast	EBS3-15-T8	Replaces EBS2-T15-T8	\$56.60
70-1585-00	15 Watt Rebuild Kit	432315-00	EBS3-6-T5	\$11.55
70-1858-00	8 Watt Rebuild Kit	-	For Aristocrat 8 Watt Ballast	\$10.25
70-1671-00	6 Watt Transformer	-	For Aristocrat 6 Watt Ballast	\$17.50

BALLASTS & REPAIR KITS


91-11176-00

91-12247-00

91-14879-00

20-011580-00-00

20-0139

91-3847-00

Part Number	Description	Ref. No.		Price per ea.
WMS BALLAST				
20-10481.1	15 Watt, 85-265VAC Ballast for BB1	OEM# 6200-004995-00-00	UB904	\$22.35
91-11176-00	6 Watt Dual Ballast for BB1	OEM# 6620-018006-00	UB904-6w2/44-1500-03	\$15.40
44-1500-02	16 Watt Ballast for BB1	OEM# 6200-008027-00-00	UB904-9w2	\$15.40
91-12247-00	20 Watt Ballast	OEM# 6200-004713-00	UB905	\$15.40
91-14879-00	9-13 Watt Ballast 24vdc Ballast	OEM# 6610-005468-00	UB2409	\$23.20
20-011580-00-00	22 Watt Universal Electronic Ballast	OEM# 20-001580-00-00	UB905-22	\$23.30
ATRONIC BALLAST				
22-0139	24V for Atronic E-Motion Toppers	Suzo-Happ OEM Ballast	-	\$43.80
22-0138	12V for Atronic E-Motion Toppers	Suzo-Happ OEM Ballast	-	\$43.80
91-3487-00	4-9 Watt Ballast for Atronic E-Motion Door	Teknoware TM80041	-	\$123.55

CASSIDA 85 HEAVY DUTY CURRENCY COUNTER



- The Cassida 85 is only built one way, and that is tough
- Constructed with durable steel parts for years of high usage
- Designed to handle all sorts of bills, ranging from crisp new bills to those that are nearing the end of their lifetime
- Engineered to tackle counterfeit bills head on
- Designed to ensure that no counterfeit bills ever appear in your stack!
- 80-0141-00 has UV (Ultra-Violet) protection
- 80-0143-00 has dual head MG (magnetic) and UV (ultraviolet) detection systems to ensure ultimate protection
- Delivers the same smooth and accurate processing with coupons, tickets, deposit slips or other documents, as well as any foreign bills
- Flexible software allows the user to easily adjust the Cassida 85 for any non-US currency

SPECIFICATIONS

Counting Speed	1200,1500 Bills/Minute
Hopper Capacity	1000 New Bills
Stacker Capacity	300 New Bills
Error Detection	Double, Half, Chain, Note Size Detection
Auto-Start Feature	Included
Operating Modes	Count, Add, Batch, Add and Batch
Batching Range	Preset or 0-999
Options	Dust Collector Remote Display
Weight	11.7 lbs.
Dimensions	10.83" x 9.17" x 9.96"
Power Source	100/240 VAC

\$899.00 ea.

80-0141-00

Cassida 85 Currency Counter with UV (Ultra-Violet) Protection

\$1,099.00 ea.

80-0143-00

Cassida 85 Currency Counter with UV (Ultra-Violet) and MG (Magnetic) Protection

CASSIDA AUTOMATIC COUNTERFEIT DETECTOR



 **cassida**
CORPORATION

- Infrared detection
- Magnetic detection
- Color spectrum analysis
- Displays grand total value
- Displays subtotal value and number of verified bills for each denomination
- Automatic bill feeding
- Front / rear bill ejection option
- Visual and sound alert on counterfeit bills
- High resolution illuminated LCD display
- Compact and sleek design
- Verifies U.S. currency
- Warranty: 1 year full parts and labor
- Upgradeable for future releases of U.S. Currency
- Compatible with the latest issue of \$100 bill

SPECIFICATIONS

Verification Speed	<1 Second/Bill
Weight	1.1 lbs.
Dimensions	4.75" x 5.25" x 2.75"
Power Source	110/220 VAC

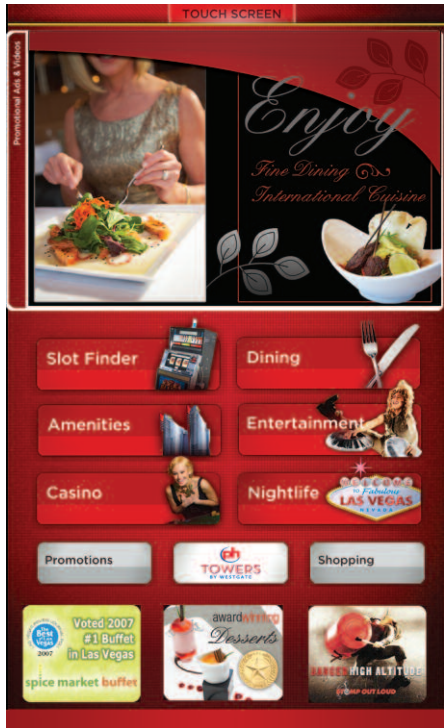
\$899.00 ea.
80-0076-00

JUPITERBAY WAYFINDING

Interactive Maps for any Venue Utilizing a Static Directory

For Casinos, Family Entertainment Centers, Hospitals, Shopping Malls, Theme Parks, College Campuses, Airports, Convention Centers or any venue that currently uses a static directory.

Our wayfinding solution provides intuitive directions by providing an on-screen path to your visitors destination. We take it a step further and allow you to rotate the map to orient to the way the kiosk is positioned on your floor. Our "Wayfinding Engine" also draws the shortest distance to their destination based on all available pathways you teach it! Updates such as new stores or attractions can be added without Jupiterbay's assistance utilizing FusionCast, our Digital Signage & Interactive Kiosk software suite.



Features

- A variety of intuitive search methods to help your visitors initially locate their destination
- Add/Edit/Delete directory listings with our web-based editor
- Multimedia platform allows you to integrate video, images and sound to the directory listing
- Reduce the amount of inquiries to your front desk, reducing staff required
- Easily add integrated advertising, adding a revenue stream to your bottom line
- Easily manage remote locations from your web browser, making changes instantly
- Enclosures can be customized to match your environment
- Weatherproof outdoor solutions available

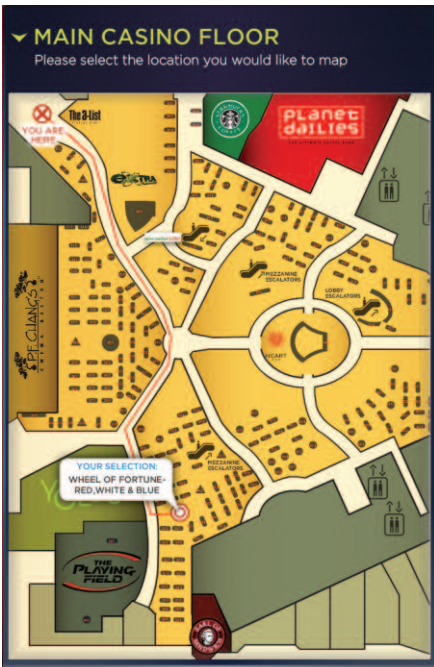
JUPITERBAY iSLOTFINDER

iSlotFinder
WAYFINDING

iSlot Finder provides your guests with a means of easily locating their favorite slot or table games on your casino floor. They simply walk up to the touch screen, select their favorite game and watch as the screen highlights their game on the map and then draws the shortest path to get there.

Features

- Provide visitors and guests with intuitive directions to their favorite slots/games within your Casino/Resort
- Intuitive interface, making it easy for anyone to use
- Support for families of Slot machine games (variation of main title)
- Link your slot management software to iSlot
- Finder to make changes seamless
- Search games based on denomination, name or theme
- Players can swipe their reward cards and slots selected from previous visits can be shown
- Available in 32", 40", 46" & 57" LCD screen sizes with integrated touch
- Can be wall mounted, end of slot bank or self-standing unit
- Integrates with "Virtual Concierge" module from Jupiterbay.
- Add details about your on-site restaurants, events, spa and on-site amenities at the touch of a finger.
- Professionally designed content, enhancing your guests experience during their stay
- Outdoor units available



Contact your Suzo-Happ Sales Representative to schedule a web demo.

• jupiterbay

SLOT MACHINE ANALYZER

Identifies compatibility problems between slot machines and online systems!

- Specifically designed to detect and diagnose communication problems between slot machines and online systems which use SAS* as their communication protocol
- Allows detection of several problems coming from TITO, cashless transactions (EFT and AFT), communication incompatibility and data corruption or accounting discrepancies
- Conceived and designed by a slot machine manufacturer and user
- Provides an unmatched tool for casino operators and audit or online slot machine system manufacturers
- Includes trace Viewer analysis software which allows an understanding of the communications trace with a time, source and destination tag and a high level analysis of the SAS* package
- Technical features:
 - Bidirectional data capture at 19200 bauds with full support of 9th bit. It's high impedance input does not affect the circuits undergoing analysis

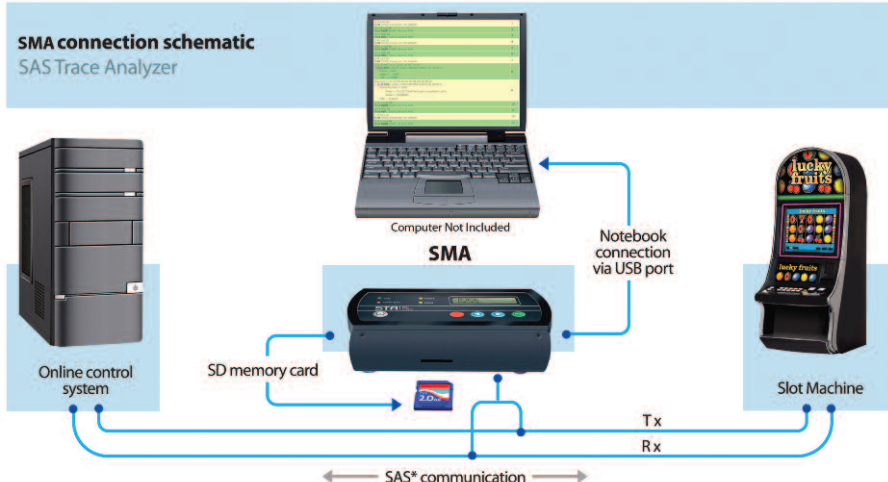


- Output dump options: Into a PC via USB port or into a SD memory card of up to 2GB
- Time tag with an accuracy of 1/10 millisecond
- Power source options: USB port (PC/Laptop), external power supply unit (DC 7.5V), or 4 AA batteries with 48-hour battery life
- Auto shut down for data protection
- Optional accessories: adaptor to connect fiber optic loops or TTL connections

* SAS is a registered trademark of IGT

\$2,599.00 ea.
SMA-2010-01

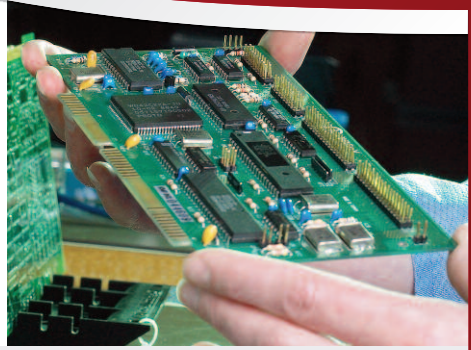
SMA connection schematic SAS Trace Analyzer



SUZO HAPP

SERVICE GROUP

Suzo-Happ provides warranty and repair services on a variety of gaming, amusement, retail and vending products.



Suzo-Happ Service Programs

Flat Rate Repairs

Reconditioned Products

On-Site Maintenance

In Select Locations

Pick Up & Delivery Service

In Select Locations

Factory trained technicians located across the United States ensure your products are restored to original equipment manufacturer's specifications using factory approved parts.

Responsive service support staff provide ease of processing your service needs.

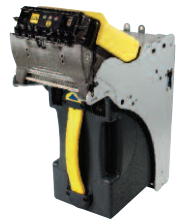
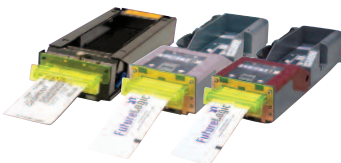
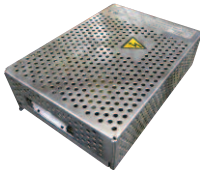
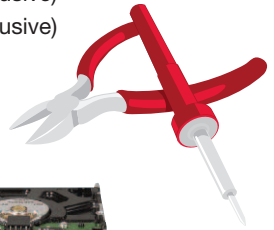
Trusted and proven service quality from original equipment manufacturers to end users.

REPAIR SERVICES

- LCD Monitors
- CRT Monitors
- Game Power Supplies
- Game Main Boards
- Bill Validators
- Ticket Printers

AUTHORIZED WARRANTY SERVICES

- FutureLogic (Exclusive)
- MEI (Exclusive)
- Kortek (Exclusive)



For your convenience, please phone, fax or email for an RMA form and authorization number.

Service RMA and Inquiries

PHONE (866) 736-2374

FAX (702) 597-5360

EMAIL SERVICE@SUZOHAPP.COM



SUZO-HAPP GROUP
13 Locations Worldwide

MOUNT PROSPECT OFFICE

1743 Linneman Rd
Mount Prospect, IL 60056

LAS VEGAS OFFICE

2015 Helm Road
Las Vegas, NV 89119

Toll Free Phone: (888) 289-4277

Toll Free Fax: (800) 593-4277

Email: info@suzohapp.com

suzohapp.com

