

CGA TO VGA CONVERTER

NEW MODEL: ACV-011

FEATURE

- * CGA game board signal can display on PC monitor or TFT monitor.
- * All new design for low picture noise and detects wider range in game board timing.
- * Low-resolution enhance to hi-resolution.
- * Picture more sharpness and tiny pixel.
- * Support sync-combine mode and sync-separate mode select by DIP SW
- * Support CGA and VGA input select by VGA bypass SW.
- * Support multi-game board select by 16ch DIP SW.
- * RGB gain adjusts by 3 VR.

SPECIFICATIONS

PARAMETER	SPECIFICATIONS	
	INPUT	DC 8-16V
POWER	CONSUMPTION	2.0 WATTS MAXIMUM
SIGNALS	INPUT1: SYNC COMBINE	VIDEO Analog RGB 1-5VP-P/IKΩ (ADJUST BY VR)
	INPUT2: SYNC SEPARATE	VIDEO Analog RGB 1-5VP-P/IKΩ (ADJUST BY VR)
	INPUT3 SVGA BYPASS	VIDEO SYNC Analog RGB 0.7VP-P/75Ω NEGATIVE / POSITIVE SEPARATE
	OUTPUT VGA/SVGA	VIDEO SYNC Analog RGB 0.7VP-P/75Ω NEGATIVE / POSITIVE SEPARATE TTL 5.0VP-P
	INPUT1	CGA 6PIN (R, G, B, GND, H, V, N.C.)
	INPUT2	CGA 6PIN (R, G, B, GND, H, V)
VIDEO CONNECTOR	INPUT3 SVGA	15PIN D-SUB (STANDARD)
	OUTPUT VGA/SVGA	15PIN D-SUB (STANDARD)
USER CONTROLS	VGA BYPASS SWITCH VR (R G B GAIN ADJUST)	
ENVIRONMENTAL LIMITS	OPERATING TEMP.	0° TO 55°C
WEIGHT	STORAGE TEMP.	-20° TO 70°C
OVERALL DIMENSION (HxWxD)	170g 14.5x11.6x9.2 mm	

FACTORY-PRESET MODES:

MODE	INPUT		OUTPUT	
	H-FREQ(KHz)	V-FREQ(Hz)	H-FREQ(KHz)	V-FREQ(Hz)
INPUT1 SYNC COMBINE	15.45 15.6	60.0 59.1 55.3	30.9 31.2 31.2	60.0 59.1 55.3
INPUT2 SYNC SEPARATE	14.5-16.5	50-65	29.0-33.0	50-65
INPUT3 VGA/SVGA BYPASS	ALL VGA/SVGA TYPE	ALL VGA/SVGA TYPE	SAME INPUT	SAME INPUT

TABLE 2

CH	DIP SW	GAME BOARD NAME
1	4321	NORMAL ICB
2	XXXX	IGS
3	XXXX	SUBSINO
4	XXXX	ASTRO
5	XOXX	CYE
6	XOXO	AMATIC
7	XOOX	GMS
8	XOOO	
9	OXXX	
10	OXOX	
11	OXOX	
12	OXOO	
13	OXXX	
14	OXXX	
15	OXXX	
16	OXXX	SEPARATE SYNC.

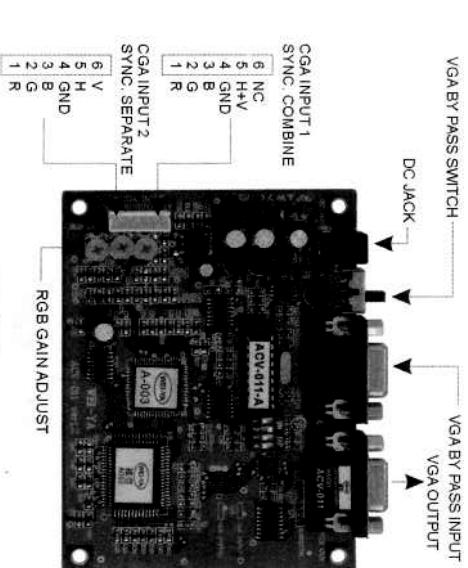
TABLE 3

- * "O"= ON, "X"=OFF
- * CH1 FOR NORMAL ICB CH2-15 FOR CUSTOMER CODE
- **NOTICE**
- * IN CGA COMBINE SYNC MODE, THE TIMMING IS VERY IMPORTANT. IT NOT SAME TO ABOVE LIST TIMMING BUT, IT MAY WORK NORMALLY.
- * IF YOU HAVE ANY TIMMING THAT WE UNSUPPORT. PLEASE LET ME KNOW, WE WILL DO IT WELL.
- * IN CGA SEPARATE SYNC MODE, IT MAY SUPPORT ALL CGA TYPE SIGNALS
- * IT CAN INPUT VGA, SVGA, XGA SIGNALS BYPASS TO VGA OUTPUT CONNECTOR.

**INSTALLATION

- ◆ FIRST, PLEASE MAKE SURE THAT THE DC VOLTAGE IS EXACTLY WITHIN THE VOLTAGE RANGE SHOWN ON THE SPECIFICATION.
- ◆ CHECK IF THE SIGNAL SOURCE AND CONVERTER ARE BOTH IN OFF STAGE BEFORE CONNECTING
- ◆ PLUG THE FREE END OF SIGNAL CABLE INTO THE 6PIN PLUG OF CONVERTER. ANOTHER CONNECT TO SIGNAL SOURCE.
- ◆ PLUG THE FREE END POWER CONNECTOR INTO DC-JACK OF DC SOURCE.
- ◆ SELECT DIP SW FOR SUPPORTED GAME BOARD.
- ◆ TURN ON THE SIGNAL SOURCE AND CONVERTER'S POWER, AND IT CAN WORK.

CGA TO VGA CONVERTER



HUAI ELECTRONICS CO., LTD.

TABLE 1