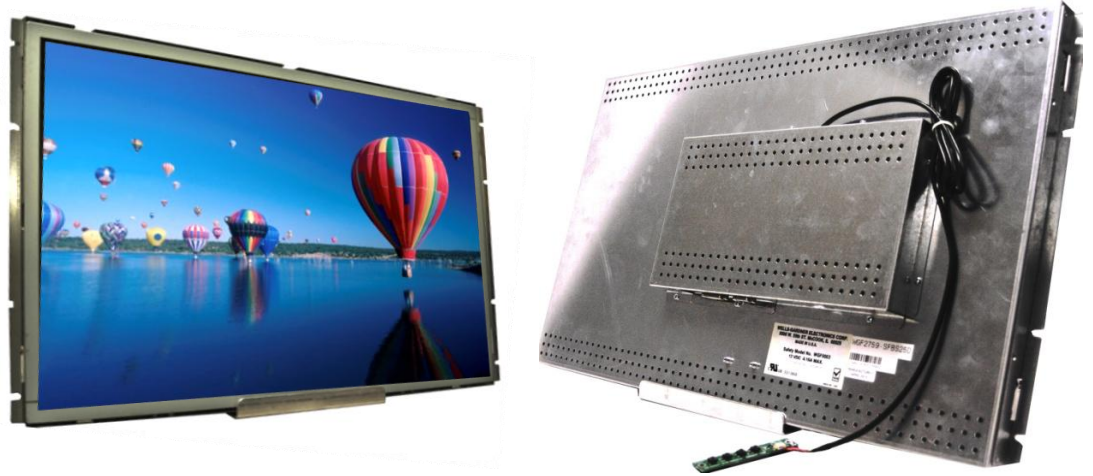


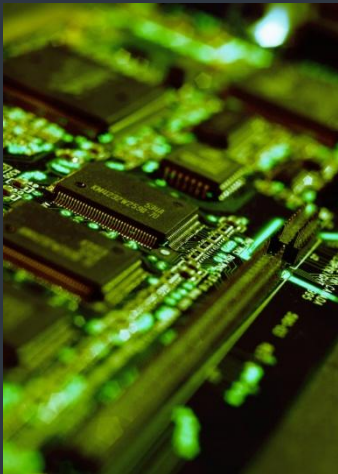
WELLS-GARDNER ELECTRONICS New Product Announcement

23" Family Series



Design and Innovation

WELLS-GARDNER ELECTRONICS prides itself on its own designs and innovations providing our customers quality, and competitive solutions.




Since 1925

WELLS-GARDNER ELECTRONICS has designed and manufactured video products since 1925 and has set benchmarks in the industry for innovation and quality solutions.



9500 W. 55th Street
Suite A
McCook, Illinois 60525-3605 USA
Phone 708-290-2100
Fax 708-290.2202

- ✓ **LED Back Lighting for reduced Power Consumption**
- ✓ **UL Safety & FCC Approved**
- ✓ **12V DC Input**
- ✓ **Touch Options**
- ✓ **MoniCU Support**

Maximum Resolution	1920 x 1080 @ 60Hz
Contrast Ratio	1000:1
Brightness	300 Nits
Response Time (G-G)	12 ms typical
Viewing Angle: Horizontal / Vertical	178 /178 Degrees
Video Interfaces	VGA, DVI-I (Analog and Digital)*
Horizontal Frequency Range	28-83 KHz
Vertical Frequency Range	49 – 76 Hz
Power Consumption	~16.5W typical,
AC Input Range (DC Brick)	100-240VAC
Electrical Safety	UL /CE TUV Safety
RF Emission Limits	FCC Part 15 Class A
Electrostatic Discharge Immunity	EN61000-4-2
Operating Temperature	0 to +50 C
	5 Profiles Supported **

Models	300 NITS	No Glass	Tempered Glass	3M Touch w/USB	Optera Touch w/Serial??
WGF2359-SFBS09C	✓	✓			
WGF2359-SFBS17C	✓		✓		
WGF2359-MFBS18C	✓			✓	
WGF2359-DFBS19C	✓				✓

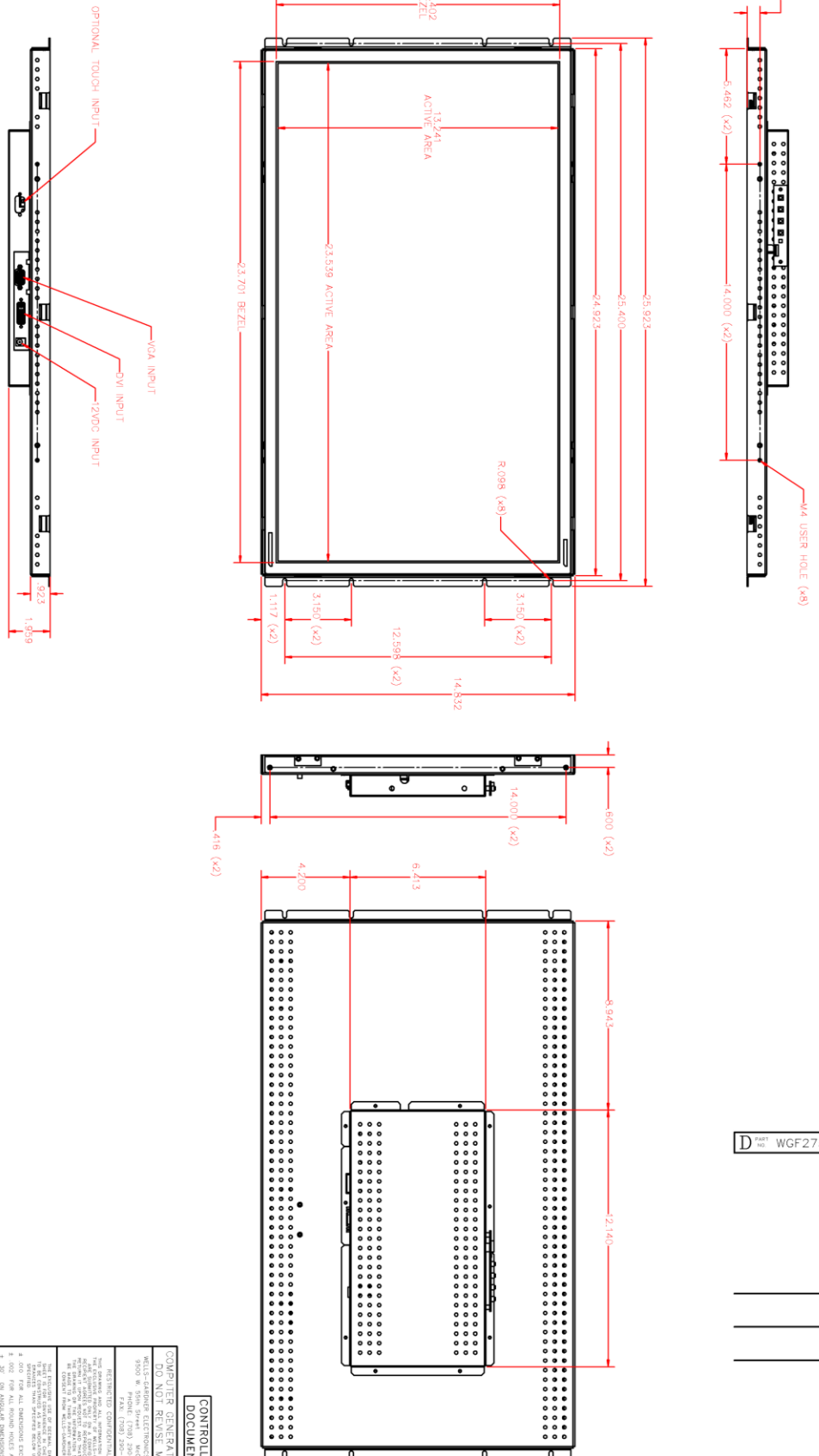
(* Other options available (HDMI, etc.), upon request

(**) MoniCU allows the user to create, save, and use profiles to create the ideal look for their monitor. Each profile contains the values of a large subset of monitor attributes such as brightness, contrast, and color temperature.



069XZZZZ-100A

MECHANICAL SPEC



STANDARD OF PARTS MUST BE REFERRED TO WELLS-GARDNER ELECTRONICS CORPORATION ENGINEERING DEPARTMENT FOR CHECK AND APPROVAL BEFORE PROCEEDING WITH PRODUCTION ON ORIGINAL ORDERS AND COPY SPEC. SHEETS REQUIRED.

D WGF2759-SFBS25D

REV	DATE	BY	DESCRIPTION



CONTROLLED DOCUMENT

COMPUTER GENERATED DRAWING
DO NOT REVISE MANUALLY

WELLS-GARDNER ELECTRONICS CORPORATION
9500 W. 50TH STREET, MCKEAN, IL 60925
TEL: (708) 290-2200 FAX: (708) 290-2202

RESTRICTED CONFIDENTIAL DOCUMENT
THIS DRAWING IS THE PROPERTY OF WELLS-GARDNER ELECTRONICS CORPORATION. IT IS TO BE USED ONLY FOR THE MANUFACTURE OF THE PARTS AND ASSEMBLIES SPECIFICALLY IDENTIFIED IN THIS DRAWING. IT IS NOT TO BE REPRODUCED, COPIED, OR TRANSMITTED IN ANY FORM OR BY ANY MEANS, ELECTRONIC OR MECHANICAL, INCLUDING PHOTOCOPYING, RECORDING, OR BY ANY INFORMATION STORAGE AND RETRIEVAL SYSTEM, WITHOUT THE WRITTEN PERMISSION OF WELLS-GARDNER ELECTRONICS CORPORATION.

THIS DRAWING IS THE PROPERTY OF WELLS-GARDNER ELECTRONICS CORPORATION. IT IS TO BE USED ONLY FOR THE MANUFACTURE OF THE PARTS AND ASSEMBLIES SPECIFICALLY IDENTIFIED IN THIS DRAWING. IT IS NOT TO BE REPRODUCED, COPIED, OR TRANSMITTED IN ANY FORM OR BY ANY MEANS, ELECTRONIC OR MECHANICAL, INCLUDING PHOTOCOPYING, RECORDING, OR BY ANY INFORMATION STORAGE AND RETRIEVAL SYSTEM, WITHOUT THE WRITTEN PERMISSION OF WELLS-GARDNER ELECTRONICS CORPORATION.

1. 200 DIMENSIONS UNLESS OTHERWISE SPECIFIED.
2. DIMENSIONS TO BE GAUGED AT RT.
3. DIMENSIONS TO BE GAUGED AT RT.
4. 400 PPM ALL DIMENSIONS EXCEPT ROUND HOLES.
5. 100 PPM ALL ROUND HOLES AND ROUND PARTS.
6. 100 PPM ALL DIMENSIONS UNLESS OTHERWISE SPECIFIED.
7. DIMENSIONS TO BE GAUGED AT RT.
8. DIMENSIONS TO BE GAUGED AT RT.
9. DIMENSIONS TO BE GAUGED AT RT.
10. DIMENSIONS TO BE GAUGED AT RT.

READ ALL NOTES.

CHECKED BY: [Signature] DATE: [Date]
DESIGNED BY: [Signature] DATE: [Date]
DRAWN BY: [Signature] DATE: [Date]
APPROVED BY: [Signature] DATE: [Date]

DATE: 1/7/14
SCALE: 1:1
SHEET: 1 OF 1 SHEETS
PART: DU 27 LED W/SAMSUNG PANEL (PH/TH/D) VGA/DVI
JOB: WGF 2759-SFBS25D