



TRANSACT

Visual Quick Start Guide to

PJ Terminal Program



PJTerminal Program

This Guide shows the steps to

- Setting up the PJTerminal Program
- Send data using the PJTerminal program to the printer.

PJTerminal Program

The first thing is to setup the port that the PC is using to communicate to the printer. Click on the Port Menu and select Settings. Then, click on the down arrow in the communications settings box to see the ports available, and select your port.

Example

LPT1 – for Parallel Printers

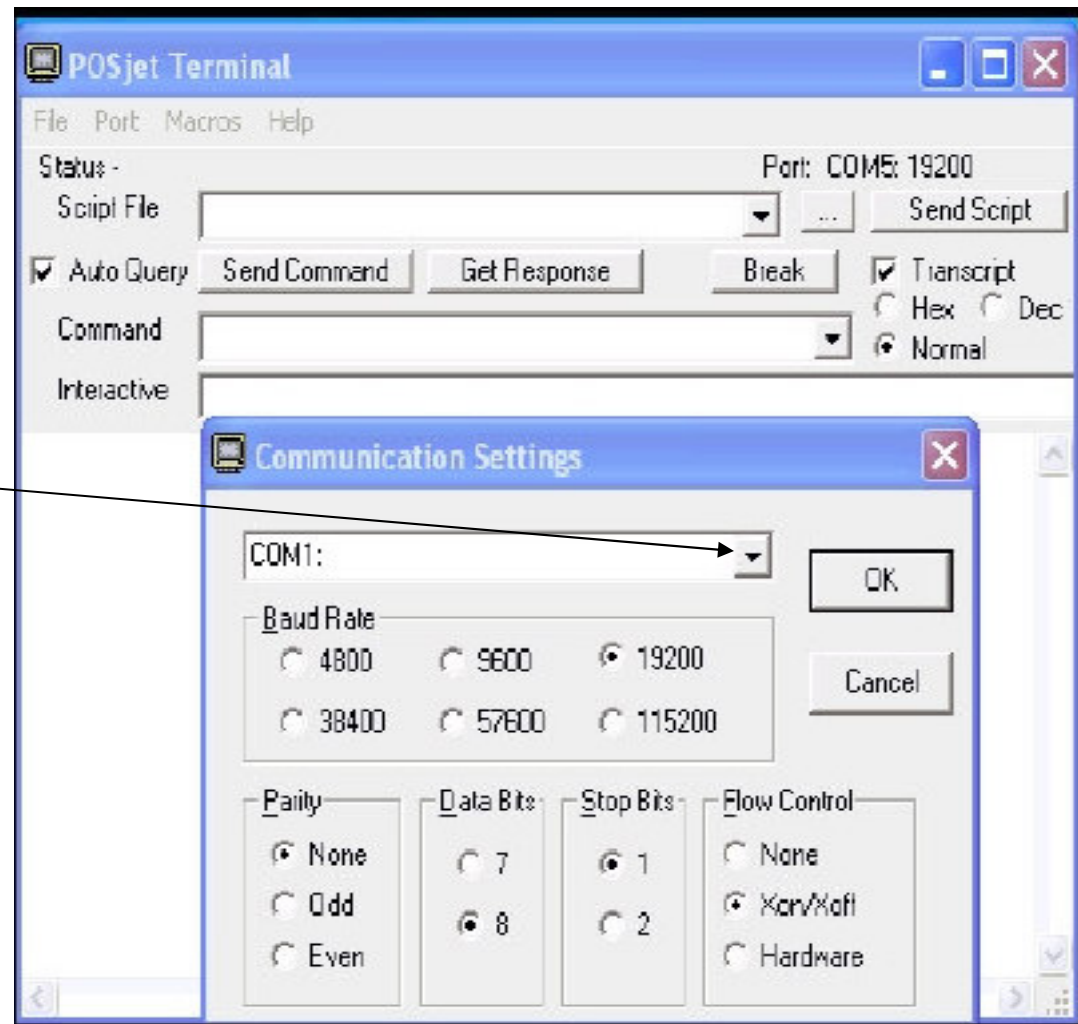
COM1 – for Serial Printers

USB use the Virtual
COM port

USB001 (COM3)

Ethernet

192.168.1.75:9100

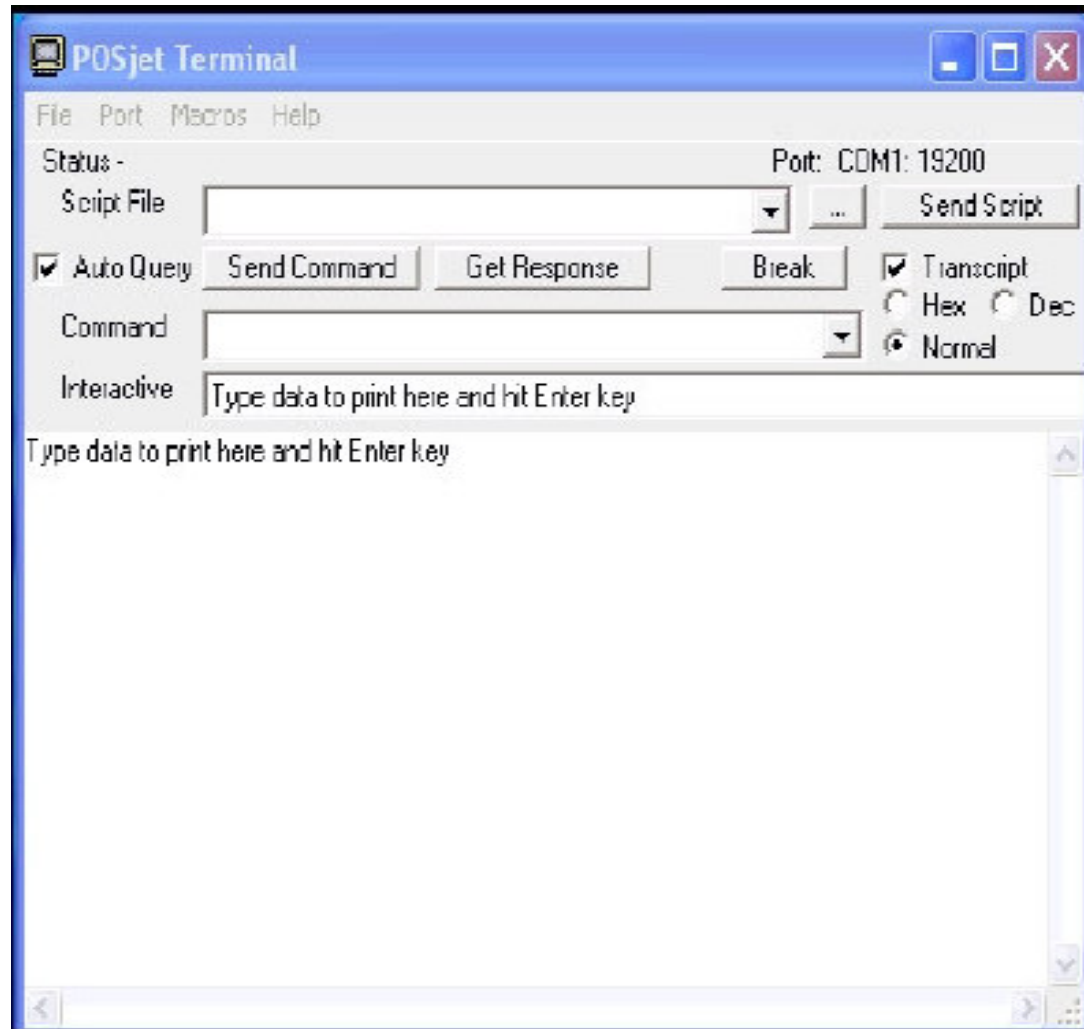


PJTerminal Program

There are 3 Boxes

The Interactive Box

Position the cursor in this box and press the ENTER key on the PC. The program will send a CR LF to the printer, you should see the printer feed paper. Type data in this box and hit the ENTER key. The data typed is printed.



PJTerminal Program

The Command Box

This box is used to send commands to the printer.

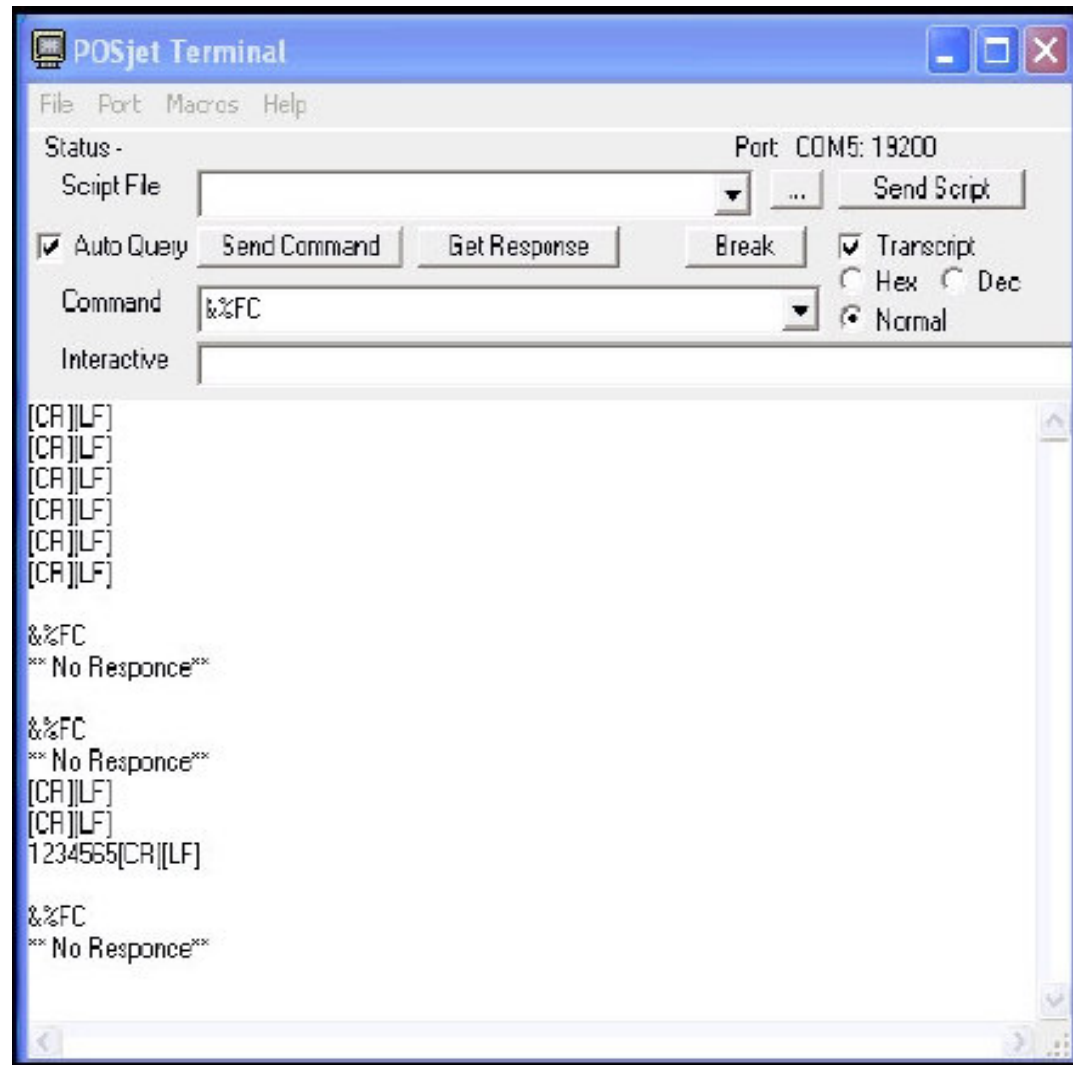
EXAMPLES

Auto Cut **&%FC**

Fire Cash Drawer **&%D1**

Enter **&%FC** and click Send Command. The same command can be entered in the decimal format. **<27><118>**, numbers enclosed by the less than greater than symbols.

See the programmers manual for additional commands.



PJTerminal Program

The Script Box

In C:\Program Files\TranAct\PJTerminal folder is a script file ((TEST.DMO)

The little square button to the right of the Script Box is a Browse button. Browse to the folder and select the TEST.DMO file.

Press the Send Script button, the printer will print a sample receipt.

You can use NotePad to open the script file and see the commands used to print the receipt

