

6. General Specifications:

Currency and Protocol: See Software Description Document

Electrical Specification:

Voltage	Max. Operating Current	Max. Current
24 V DC	2.5 A	4.0 A

Use only current limiting CSA or UL approved Power Supply.

Operating Temperature: -0 to +60 Degrees Celsius

Weight: 18.2 kg (Without Cassette)

Weight of Cassette: 2.3 kg

Features: Multi-Width Validating Head
End Switch for the Cassette
Metal Coin-Proof Bezel

Items Enclosed: Bill-to-Bill Currency Management System
User Guide
Software Description
Security Locks Installation Instruction OPT-BB-INST-5
Mounting Kit for Lock Installation OPT-MKBB-LOCK
Mounting Kit for Grounding Connection OPT-MKBB-GND
Mounting Kit for Dispensing Cassette OPT-MK-BBD
Wiring Harness OPT-HS-BB-CCNET

Optional: Sensor Box Extractor OPT-HW-FT01
Mounting Kit Outlet Connector OPT-MKBB-EA
CCNET Interface Description OPT-MAN-CCNET



1743 Linneman Road, Mount Prospect, IL 60056 USA
PHONE: 1-847-952-5932 or 1-800-239-7017

bill-to-bill@suzohapp.com

<http://www.suzohapp.com/Bill-to-Bill>

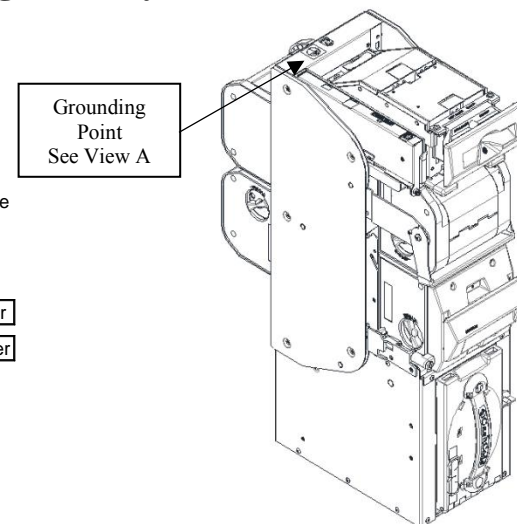
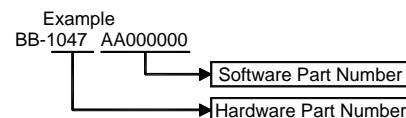
© 2017 SUZOHAPP



Bill-to-Bill Currency Management System

MBB-5320

The Part Number on the Label includes Hardware Part Number and Software Part Number.



1. Assembly Contents:

Unit	Part No.	Description
Validating Head	MFLV-9013	With Multi-Width Centering Mechanism
Sense -A- Click	FLS-1706U FLS-1706L	Sense-A-Click Sensor Packs
Bezel	MFLB-6101	Metal Outer Coin-Proof Bezel with GND
Bezel	MFLB-6201	Plastic Inner Validator Bezel
Bezel	MFLB-6301	Metal Outer Dispenser Bezel
Housing	BBH-5513	1000, RFID
Chassis	BBC-0111	Holder for 3 Recycling Cassettes, Dispensing Cassette and Path Switch
Dispensing Cassette	BBD-0510	Metal Bezel with GND
Recycling Cassette	BBR-0112	Storage from 90 to 110 Bills, Narrow and Wide Tape
Path Switch	BBS-0110	Separating of Bills
B2B Power Interface	BBP-5730	24 V DC, RS-232 with RFID
Box Control Unit	BCU-0002	Stacking of Bills into Cash Box

2. DIP Switch Setting:

DIP switches may be accessed by removing the Validating Head and opening the transparent cover at the rear. See Software Description for correct denominations and settings.

SW No.1	ON State	OFF State	Default
SW 1.1	Bill Type 1 Enable	Bill Type 1 Disable	ON
SW 1.2	Bill Type 2 Enable	Bill Type 2 Disable	ON
SW 1.3	Bill Type 3 Enable	Bill Type 3 Disable	ON
SW 1.4	Bill Type 4 Enable	Bill Type 4 Disable	ON
SW 1.5	Bill Type 5 Enable	Bill Type 5 Disable	ON
SW 1.6	Bill Type 6 Enable	Bill Type 6 Disable	ON
SW 1.7	Bill Type 7 Enable	Bill Type 7 Disable	ON
SW 1.8	Bill Type 8 Enable	Bill Type 8 Disable	ON

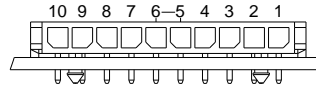
SW No.2	ON State	OFF State	Default
SW 2.1	Four Way	One Way	ON
SW 2.2	Reserved	Reserved	ON
SW 2.3	Reserved	Reserved	ON
SW 2.4	Service	Host Communication	ON

3. Interface Connector Pinout:

Mating Connector:

Socket 43645-1000 (Molex)

Contact 43030-0008 (Molex)



Terminal	Circuit
1	+ 24 V DC
2	+ 24 V DC
3	0 V DC
4	0 V DC
5	GND
6	GND
7	TxD
8	RxD
9	M – RES
10	COMM GND

4. Diagnostics:

Chart below lists the validator malfunctions, as indicated by the flashing bezel light:

No. of Consecutive Flashes	Malfunction
1 Green/ Red	COM Port CRC error
2 Green/ Red	Internal CRC error
3 Green/ Red	Improper Memory Stick
4 Green/ Red	Memory Stick is absent
5 Green/ Red	Improper type of Memory Stick
6 Green/ Red	Download error

5. Grounding:

1. Ground terminal must be connected to the host machine ground.
2. Use Mounting Kit OPT-MKBB-GND.
3. Connect grounding cable to screw shown. A copper wire of 14 - 12 AWG may also be used.

View A

