



Field Bulletin

- STS USB driver selection
- STS V3.0

Bulletin #:	F00505
Bulletin Date:	July 7, 2005
Subject:	STS USB driver selection
Affected Model(s)	STS V3.0

Summary:

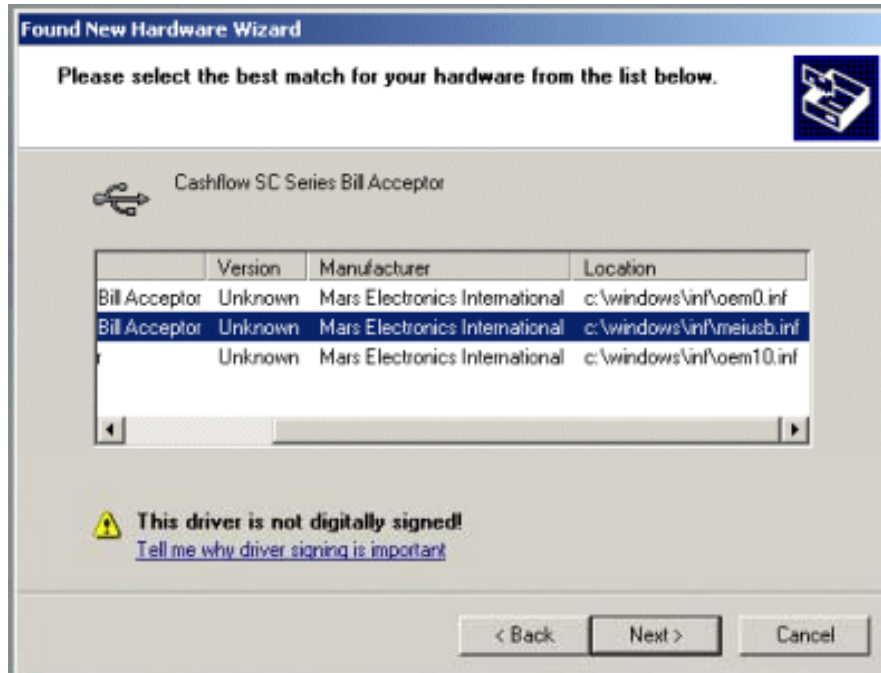
When initially installing STS V3.0 you may receive a “select dialog box” (see fig.1). This may or may not happen depending upon your Licensing type.

Details:

The selection of multiple USB drivers is not under the control of STS program, but is in fact controlled by Windows (most versions). Hence, once the multiple drives are on the system, the user will always have to select the correct driver - on every occasion the MEIUSB driver must be selected!

It has been confirmed that OEM drivers are created by windows installer when installing any non-Microsoft system drivers - it creates a copy of the driver called oem#.inf where the # is a sequential number. This is a function of windows installer and cannot be changed, but in general should cause no problem.

The issue here is that the driver information file (meiusb.inf) changed slightly between the V1.01 and the V1.2 installations, which causes windows to display the select driver dialog (as shown in fig.1) as it cannot tell the difference.



Action:

To fix the problem, select the meiusb.inf driver from the screen above when prompted. To ensure that this dialog box doesn't appear again, simply delete the older OEM (.inf) file (i.e. the one with the earlier sequential number) or at least remove it from the c:\winnt\inf directory on the target PC.

For more information on this, go to <http://support.microsoft.com/default.aspx?scid=kb;en-us;317091>.