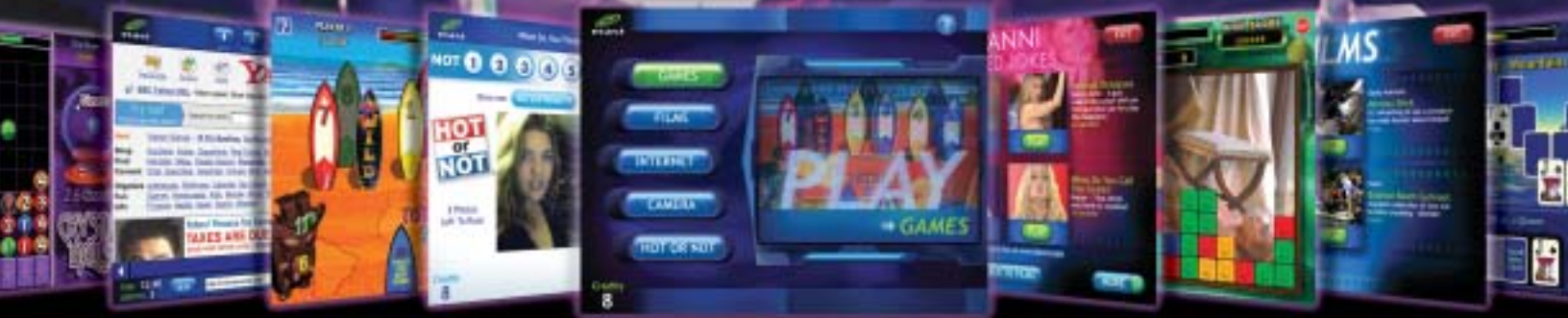


ECAST-POWERED COUNTERTOPS OUT EARN THE COMPETITION*



*JUST LIKE ECAST-POWERED JUKES

HISTORY REPEATS ITSELF! In 2001, Ecast introduced a revolutionary, broadband-enabled jukebox that makes more money than any other jukebox available. Two years later, Ecast-powered countertops are already out-earning the competition after just a few months on the market.

But don't just take our word for it:

"My GemStar™ more than **TRIPLED** the revenue of the Touchmaster 7000 it replaced, and is consistently **DOUBLING** the revenue of the Merit installed across the bar. People love the Midway games!"

Bob Morris, Action Games
(Ecast Operator - New York, New York)

"The camera is a big attraction at my bar. Girls and guys that never would have touched a gamer are using the GemStar all the time. And it's making more than the Megatouch Force it replaced."

Mike Benson, Heartland Vending
(Ecast Operator - Marshalltown, Iowa)

"I'm ecstatic with the Ecast-powered GemStar because the content appeals to the wide audience my location attracts. It earns **DOUBLE THE REVENUE** of the Merit Ruby in the same location, and has done as much as \$410 in one week!"

Craig Byler, Progressive Amusements
(Ecast Operator - Dallas, Texas)

"My GemStar always out earns the Megatouch that's just a few feet away. Folks especially love the films."

John Anderson, John's Games
(Ecast Operator - Portland, Oregon)



DO YOU HAVE A SIMILAR ECAST-POWERED COUNTERTOP SUCCESS STORY?

To share your story or to learn more please call our Sales team toll free at **(866) HI-ECAST (443-2278)**



**WE'VE ALREADY DONE IT
WITH JUKES.**

**NOW WATCH US DO THE
SAME WITH COUNTERTOPS!**

**Play Meter's 2003 State of Industry Report*

NOW AVAILABLE!

**INFINITY UPGRADE KIT
FROM HAPP CONTROLS™**

Convert your Touchmaster Infinity Into a money-making Ecast-powered countertop!
Call Ecast for Details

THE GEMSTAR FROM ROWE®

For information on the Ecast-powered Rowe GemStar contact your distributor or Rowe International at **616-243-3633**.