



INTERNATIONAL CURRENCY TECHNOLOGIES, INC.  
43010 OSGOOD ROAD, FREMONT, CA 94539  
TEL: (510) 353-0289 FAX: (510) 353-0399

*Make money work for you!*

## **Use these instructions for programming the A6 validator. Not the instructions on page 4 of the FP-001 Programmer Manual.**

**THIS PROGRAMMER IS PROGRAMMED FROM THE FACTORY WITH THE SOFTWARE FOR THE NEXGEN\$20. THEREFORE, THERE IS NO NEED TO HOOK UP TO A COMPUTER AND LOAD THE SOFTWARE CONFIGURATION!**

### **Supplement to FP-001 A6 Update Instructions**

#### **Updating the A6, supplement to Function 3 for FP-001**

1. Make sure that the dipswitch on the right front of the FP-001 is set to "normal" mode.
2. Make sure that the dipswitch on the left front of the FP-001 is set to the L3 position.
3. Connect one end of the RJ-45 (has 2 connectors which look like phone connectors) cable to the jack labeled "PH" on the FP-001
4. Connect the other end of the RJ-45 cable to the connector on the A6 (Port is below dipswitches on A6).
5. Connect main 9 pin power connector to the A6.
6. Place switch in L1 position
7. Wait for run and stack
8. Check the LEDs on the FP-001. The L1 LED should be solid green and the L4 LED should be blinking green. If the L4 LED is not blinking green push the RESET/START button on the FP-001 (white button) and wait for a moment. The L4 LED should begin blinking green.
9. On the third blink of the L4 LED switch the dipswitch from the L1 position to the L3 position (programmer - > target). **BE SURE TO DO THIS ON THE THIRD BLINK!!!**
10. The L4 LED should still be flashing. If not switch the dipswitch back to the L1 position and press the reset button again. If the L4 LED does not begin flashing please repeat steps 8 and 9 4 times. If this doesn't work contact ICT Tech Support at 510-353-0289.
11. With the L4 LED flashing and the dipswitch set to L3 press the white RESET/START button on the FP-001. This will begin updating the flash memory in the bill acceptor. This may take a while.
12. The L4 LED will extinguish briefly and then turn red. Once the L4 LED turns red please wait for it to progress through the following phases. This may up to 1.5 Minutes.

#### LED Display As Follow

- (1). RED (Starts)
  - (2). OFF (Erasing)
  - (3). RED Flashing (Verifying)
  - (4). ORANGE (Finished)
13. When the update is finished the L4 LED will remain orange. At this point press the white RESET/START button on the FP-001 an additional time.
  14. When the lights on the FRONT of the bill acceptor remain solid green insert a piece of the white calibration paper into the bill acceptor. The validator should partially take the card, hold it for a second or so, and then will return it.
  15. Once the white calibration card has been ejected press the white RESET/START button on the FP-001 one more time. The bill acceptor will reset itself and go through a power cycle ending with the Stacker cycling
  16. Unplug the Power connector.
  17. Unplug the RJ-45 cable from the bill acceptor. The bill acceptor is now updated.

Repeat these steps for other bill acceptors as needed.

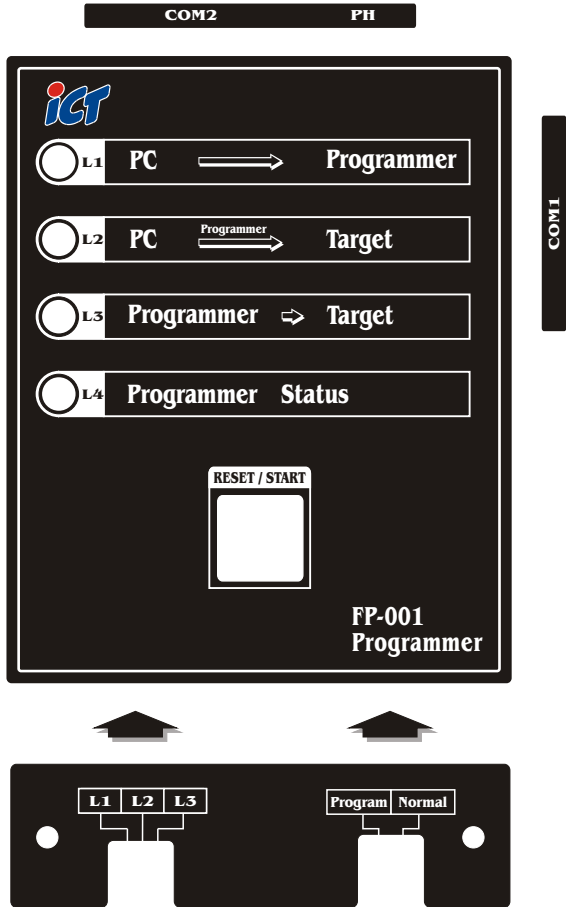
# **FP-001** → → → **PROGRAMMER**



**ict** International Currency Technologies

**Product Overview :**

The ICT FP-001 Programmer is designed for easy updating A6/A7 Serial Bill Acceptor Flash ROM.



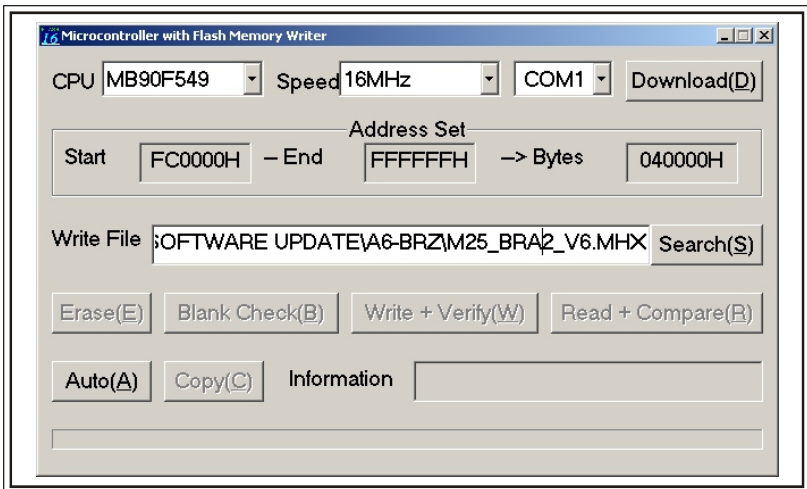
### Cable Connection :

1. Connecting RS-232 cable to the each side of PC & Programmer.  
(PC ----- COM1 Port) (Programmer ----- COM2 Port)
2. Connecting a RJ-45 cable from PH port on the Programmer to Bill Acceptor's RJ-45 port.

### Operation Manual :

#### ◆ Function 1: (PC ----- Programmer)

1. Switch to L1 position, the L1 on the top LED will stay green  
(PC ➡ Programmer)
2. The L4 LED will be flashing. If not, Please push the Reset/Start key to reset Programmer. Also make sure the programming Dipswitch on Normal Position.
3. Launch application software Flash16.exe located on you CD. Make sure Choose the CPU type is MB90F549, Speed as 16MHZ, COM1 port (or COM2 depends on your computer configurations). Press search to load the Currency Flash File that you want to use. Click Auto.



4. Remember During the downloading, L4 LED will become orange and flashing. When it's finish. The L4 LED will stay as orange. Press Reset / Start key again to reset the Programmer. LED will flash as normal green. The new Flash File will stores on the FP-001 Programmer Now.

◆ Function 2: (PC-----Target)

1. Switch to L2 position, L2 LED on the top will stay green (PC ➡ Target)
2. The L4 LED will be flashing. If not, Please push the Reset/Start key to reset Programmer. Also make sure programming Dipswitch on Normal position.
3. Using the Step as Function 1 shows above to launch application software Flash16.exe located on you CD to download new Flash File directly to Bill Acceptor. That means at this time. The FP-001 Programmer just like a path to communicate between you PC and Bill Acceptor. No Flash file will store on FP-001 Programmer.

◆ Function 3: (Programmer-----Target)

1. Switch to L3 position, the L3 on the top LED will stay green (Programmer ➡ Target)
2. The L4 LED will be flashing, If not please push the Reset/Start key to restart Programmer. Also make sure Programming Dipswitch on Normal position.
3. At this time it's ready for programming the Bill Acceptor by using FP-001 Programmer.
4. Presses the Start Switch one time, Wait a few seconds. The L4 will turn red and Flashing. It means it's doing programming, erasing and verifying.

LED Display As Follow :

- (1). RED (Starts)
- (2). OFF (Erasing)
- (3). RED Flashing (Verifying)
- (4). ORANGE (Finish)
5. When it finished. L4 LED will stay orange. Now, Press Start switch again to Let the Bill Acceptor auto adjust sensor. Remember in the front of the Bill Acceptor LED will stay green. Insert a testing write card; The BA will eject the Card after finished adjusting.
6. Press one more time Start key, The Bill Acceptor will automatically power cycle It. The Bill Acceptor just finished Updating new flash.
7. Now you can take this pre-programmed FP-001 Programmer to another Bill Acceptor. Just simply connecting the RJ-45 cable from PH port on the Programmer to Bill Acceptor's RJ-45 port. Just repeat Function 3 (Programme r----- Target) to program every Bill Acceptor on this time.