



General Specifications

Supported bill	U.S. \$ 1, 5, 10, 20, (old5, 10, 20), (new20) 4 bills.
Bill insertion	4 way.
Acceptance rate	90% or more. The second acceptance is included in the acceptance count. The following bills are excluded. a. Incomplete bills such as extremely dirty, wetted, Broken or wrinkled ones. b. Bills folded at a corner or side. c. Incorrect-made bills.
Validation time	4 seconds or less. (This is the time for VEND signal output)
Interface logic	Photo coupler isolation signals (input). Transistor control signals (output).
Maintenance	Can be opened at upper. (A hinge is attached at the back)
Power	DC+12V ± 5%.
Power consumption	Standby : 0.11A @ DC+12V Operating : 1.5~2.0A @ DC+12V
Environment	Operating : 0°C~45°C. Storage : -20°C~60°C. Humidity : 30% - 85% RH.(not-condensing)
Installation	In-house.

DIP SWITCHES SETTING

FUNCTION	SW1	SW2	SW3	SW4	SW5	SW6	SW7	SW8	SW9	SW10
★ 1 Pulse / US \$1	OFF	OFF	OFF							
2 Pulse / US \$1	OFF	OFF	ON							
3 Pulse / US \$1	OFF	ON	OFF							
4 pulse / US \$1	OFF	ON	ON							
5 Pulse / US \$1	ON	OFF	OFF							
10 Pulse / US \$1	ON	OFF	ON							
20 Pulse / US \$1	ON	ON	OFF							
100 Pulse / US \$1	ON	ON	ON							
Fast output Pulse <small>Lo= 50ms Hi=100ms</small>				ON						
★ Slow output Pulse <small>Lo= 50ms Hi=300ms</small>				OFF						
Inhibit level Active Low					ON					
★ Inhibit level Active High					OFF					
★ Accept US \$ 1						ON				
Reject US \$ 1						OFF				
★ Accept US \$ 5							ON			
Reject US \$ 5							OFF			
★ Accept US \$10								ON		
Reject US \$10								OFF		
★ Accept US \$20									ON	
Reject US \$20									OFF	
★ High Security With Antifish Function										ON
High Acceptor Without Antifish Function										OFF

★ Manufacture setting

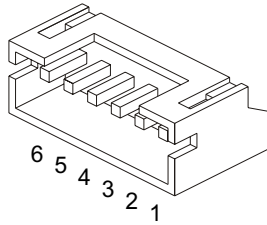
Note: After setting dip switch of the credit pulses , you should reset the bill acceptor again.

★ Antifish function is limited only to the BA without stacker.

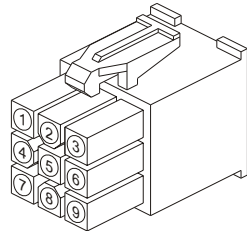
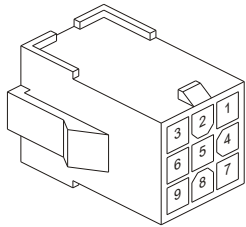
BILL ACCEPTOR		PLASTIC STACKER	
●	Weight : 700g	●P2	Weight : 1500g (200pieces)
		●P6	Weight : 1600g (600pieces)

CONNECTOR (600H, 700A, 700C STD)

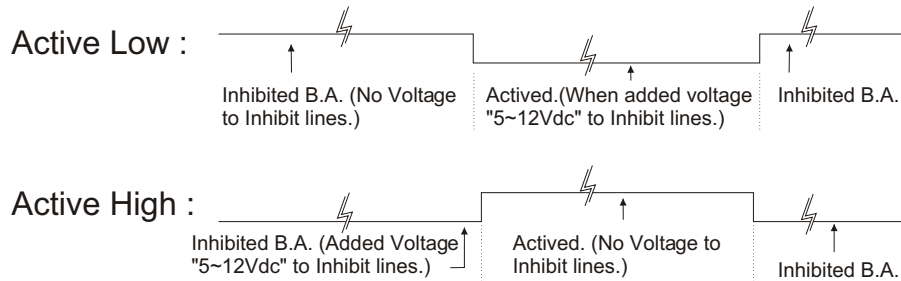
- 1 -- POWER DC+12V±5%(RED)
- 2 -- POWER GND(ORANGE)
- 3 -- INHIBIT INPUT (+5~12Vdc).....(YELLOW)
- 4 -- INHIBIT GND(GREEN)
- 5 -- VEND+; CREDIT PULSES OUTPUT(BLUE)
- 6 -- VEND- ; CREDIT PULSES OUTPUT ...(PURPLE)



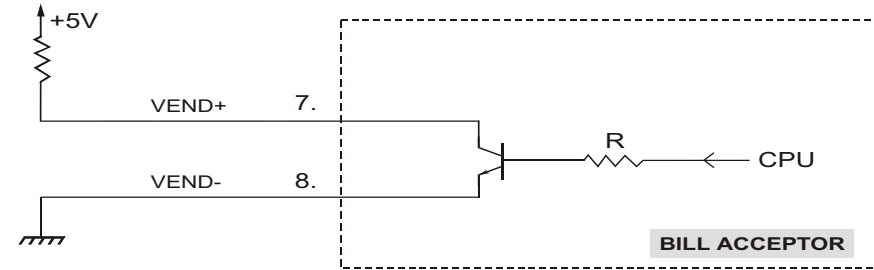
RED.....	12V(5)	GREEN.....	INH-(2)
ORANGE.....	GND(9)	BLUE.....	VEND+(7)
YELLOW.....	INH+(1)	PURPLE.....	VEND-(8)



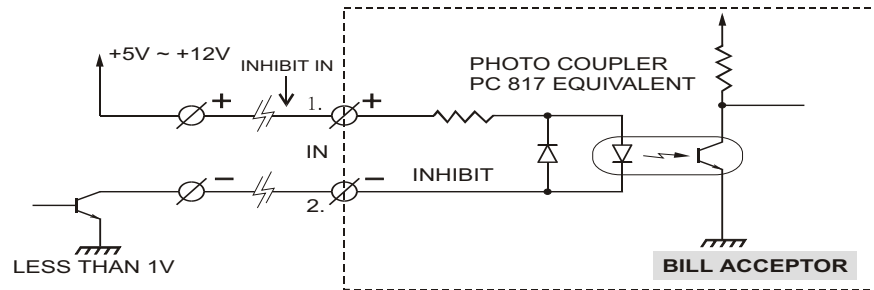
Inhibit level:



Credit Pulses Output Interface:



Inhibit Signal Input Interface:



Dimensions:

<p>Unit: mm</p>	<p>Unit: mm</p>	<p>Unit: mm</p>
● BILL ACCEPTOR	● P6 PLASTIC STACKER	● P2 PLASTIC STACKER